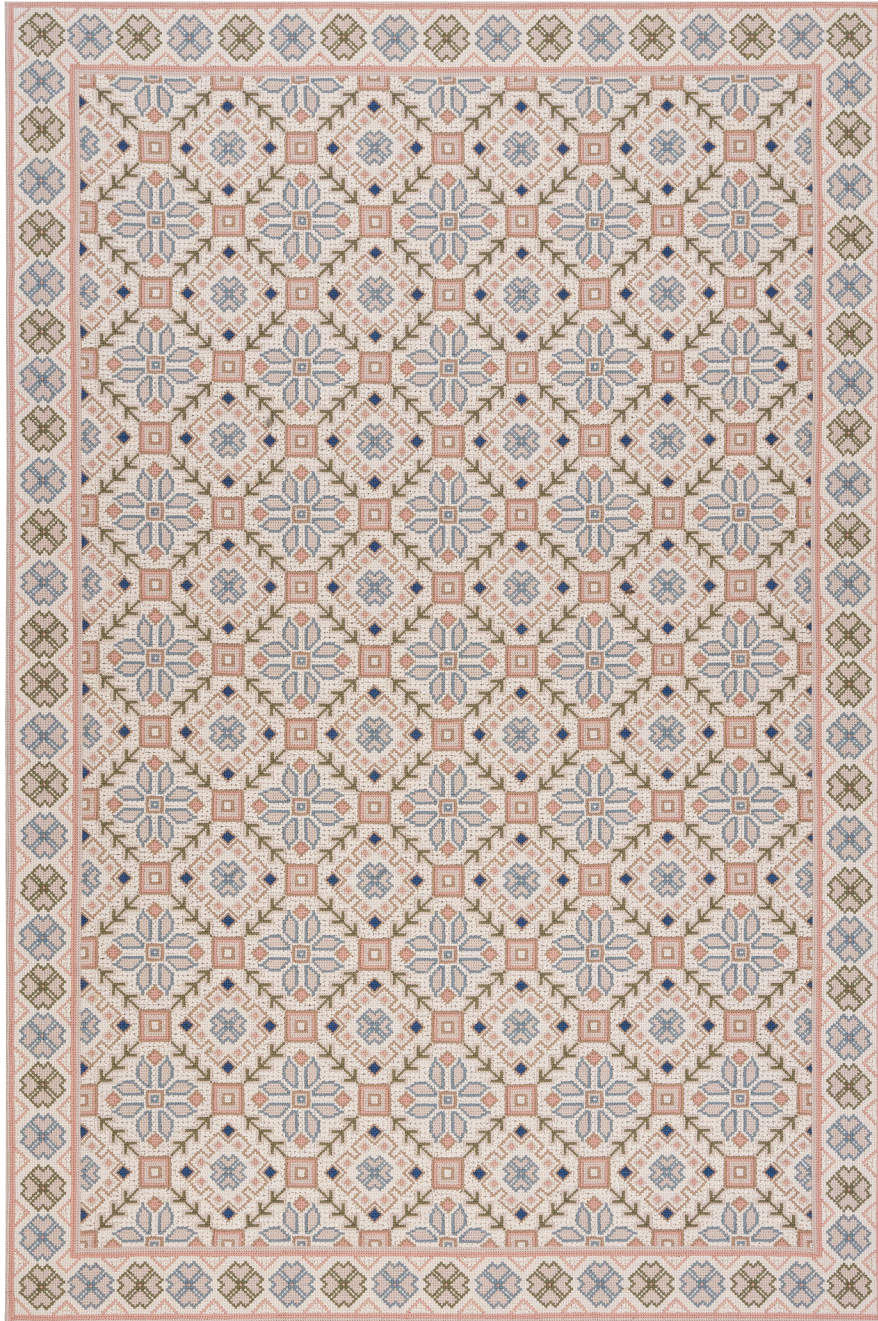


## ROSECLIFF

087569

COLOR: SPRING FIBER: WOOL GROUP# 1074



6' X 9' RUG SHOWN



2' X 2' SAMPLE SHOWN



DETAIL SHOWN



DETAIL SHOWN

### ABOUT ROSECLIFF:

INSPIRED BY SHETLAND SKI SWEATERS, ROSECLIFF TURNS TWO MOTIFS WITH THE DELICACY OF SNOWFLAKES INTO A FIELD OF ORNATE DIAMOND MEDALLIONS DONE IN A SMALL, EASY-TO-USE SCALE. THE NEEDLEPOINT CONSTRUCTION INFUSES THIS WOOL RUG WITH A VINTAGE APPEAL, WHILE THE MULTI-HUED PALETTE SHOWS MODERN RESTRAINT. VARIED STITCH SIZES PROVIDE CLOSE-UP VISUAL INTEREST, AND IT'S FINISHED WITH A THIN BORDER OF TINY FOUR-LEAF CLOVER MOTIFS.

# PATTERSON FLYNN

©2024 PATTERSON FLYNN. ALL RIGHTS RESERVED.



**ROSECLIFF**

087570

**COLOR:** CAMEL **FIBER:** WOOL **GROUP#** 1074



ARTWORK FOR 9' X 12' RUG SHOWN



2' X 2' SAMPLE SHOWN



DETAIL SHOWN



DETAIL SHOWN

**ABOUT ROSECLIFF:**

INSPIRED BY SHETLAND SKI SWEATERS, ROSECLIFF TURNS TWO MOTIFS WITH THE DELICACY OF SNOWFLAKES INTO A FIELD OF ORNATE DIAMOND MEDALLIONS DONE IN A SMALL, EASY-TO-USE SCALE. THE NEEDLEPOINT CONSTRUCTION INFUSES THIS WOOL RUG WITH A VINTAGE APPEAL, WHILE THE MULTI-HUED PALETTE SHOWS MODERN RESTRAINT. VARIED STITCH SIZES PROVIDE CLOSE-UP VISUAL INTEREST, AND IT'S FINISHED WITH A THIN BORDER OF TINY FOUR-LEAF CLOVER MOTIFS.

**PATTERSON FLYNN**

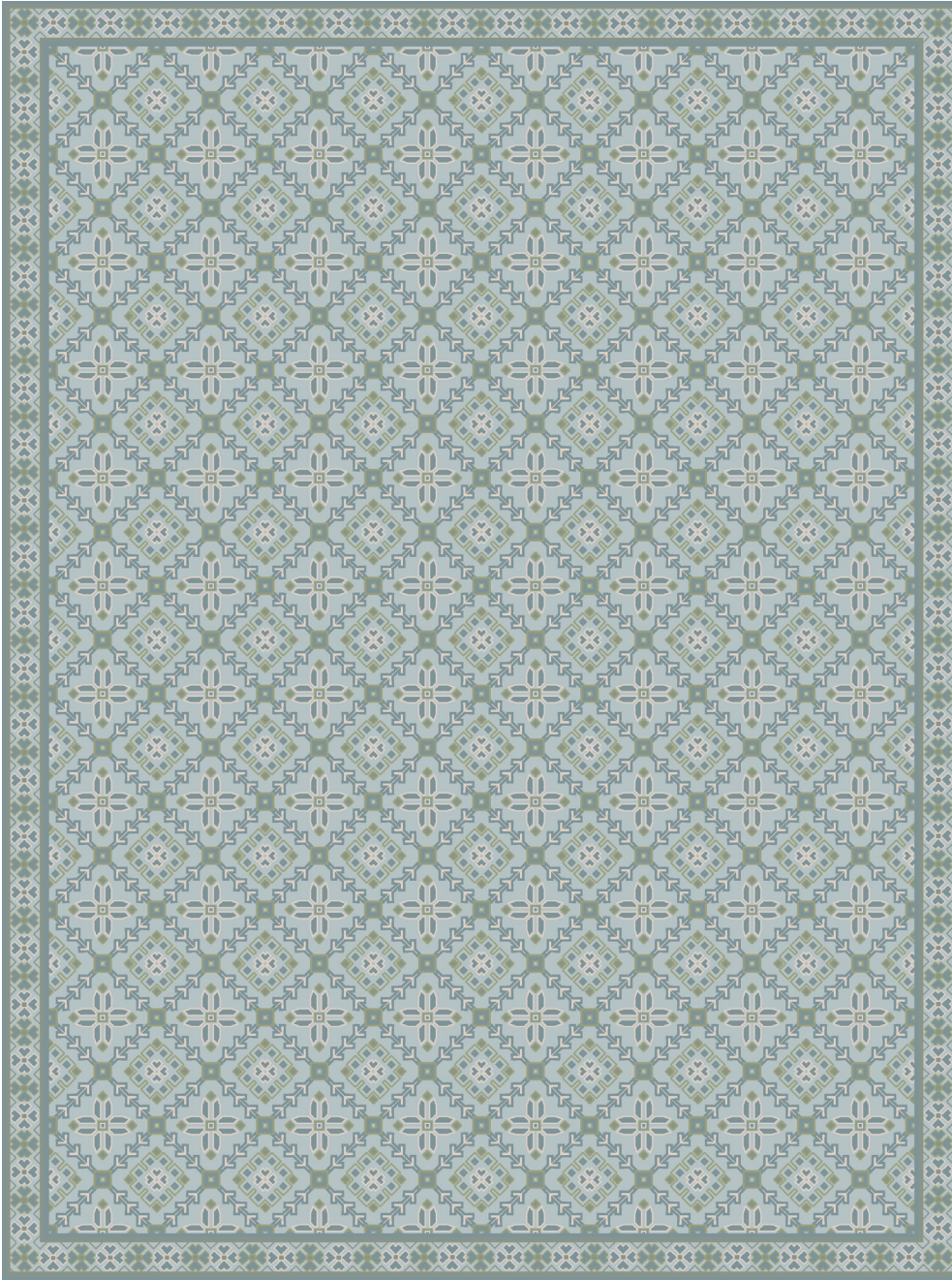
©2024 PATTERSON FLYNN. ALL RIGHTS RESERVED.



**ROSECLIFF**

087571

**COLOR:** MEADOW **FIBER:** WOOL **GROUP#** 1074



ARTWORK FOR 9' X 12' RUG SHOWN



2' X 2' SAMPLE SHOWN



DETAIL SHOWN



DETAIL SHOWN

**ABOUT ROSECLIFF:**

INSPIRED BY SHETLAND SKI SWEATERS, ROSECLIFF TURNS TWO MOTIFS WITH THE DELICACY OF SNOWFLAKES INTO A FIELD OF ORNATE DIAMOND MEDALLIONS DONE IN A SMALL, EASY-TO-USE SCALE. THE NEEDLEPOINT CONSTRUCTION INFUSES THIS WOOL RUG WITH A VINTAGE APPEAL, WHILE THE MULTI-HUED PALETTE SHOWS MODERN RESTRAINT. VARIED STITCH SIZES PROVIDE CLOSE-UP VISUAL INTEREST, AND IT'S FINISHED WITH A THIN BORDER OF TINY FOUR-LEAF CLOVER MOTIFS.

**PATTERSON FLYNN**

©2024 PATTERSON FLYNN. ALL RIGHTS RESERVED.