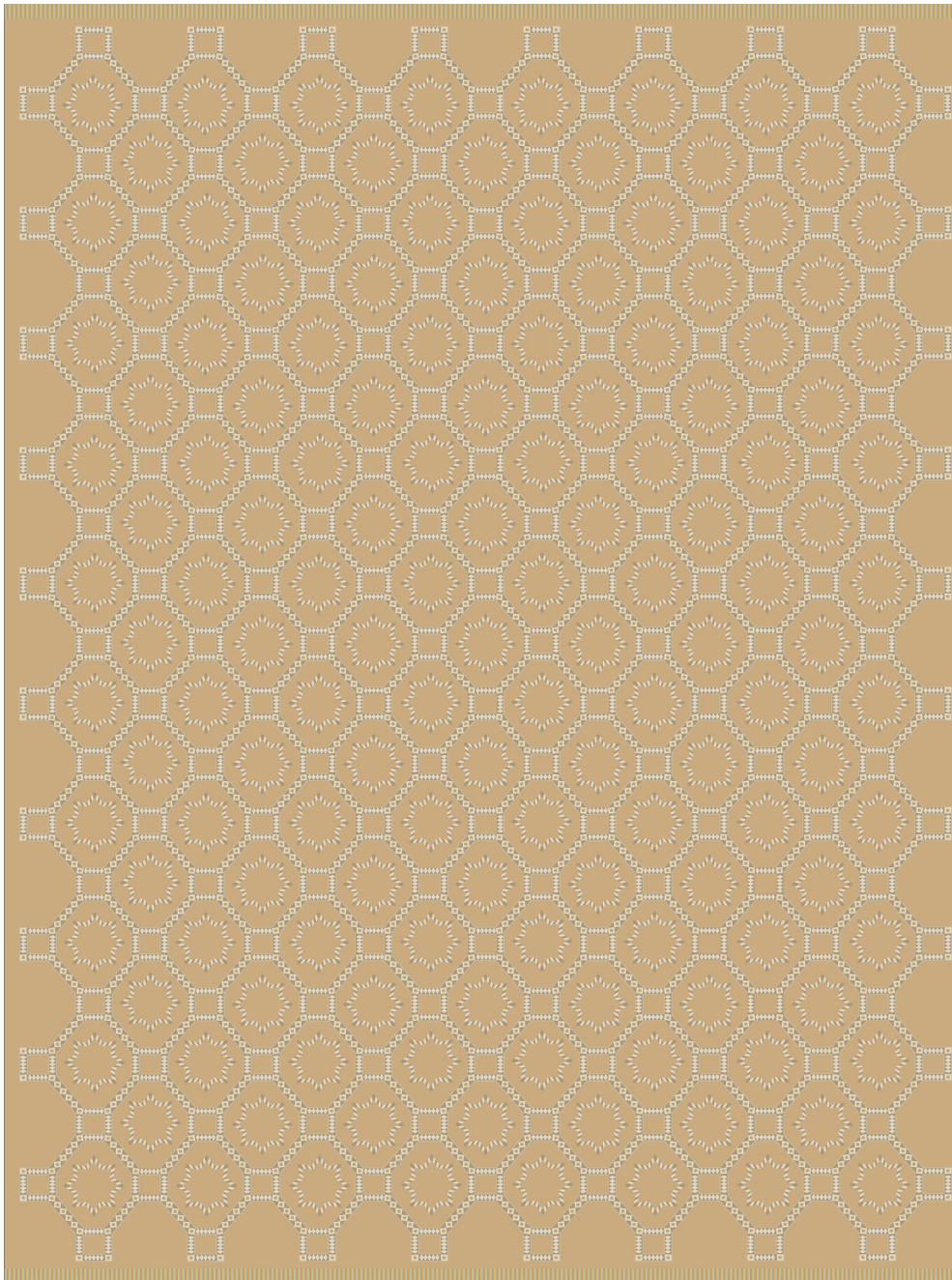


# SYRUS

083235

**COLOR:** SOFT GOLD **FIBER:** SILK **GROUP#** 517



ARTWORK FOR 9' X 12' RUG SHOWN



2' X 2' SAMPLE SHOWN



DETAIL SHOWN



DETAIL SHOWN

## ABOUT SYRUS:

CARRYING THE LOOK OF ANTIQUE MOSAIC TILE, OUR SYRUS RUG HAS A TRELLIS DESIGN INSPIRED BY A PIECE OF OTTOMAN-ERA EMBROIDERY. WHILE IT'S INFUSED WITH HISTORIC INFLUENCES, THE GRAPHIC PATTERNING STILL FEELS CLEAN AND CONTEMPORARY, AND THE MIXED-TEXTURE FLATWEAVE WITH CUT PILE MOTIFS IS SOFT, SOPHISTICATED, AND SUPREMELY USABLE.

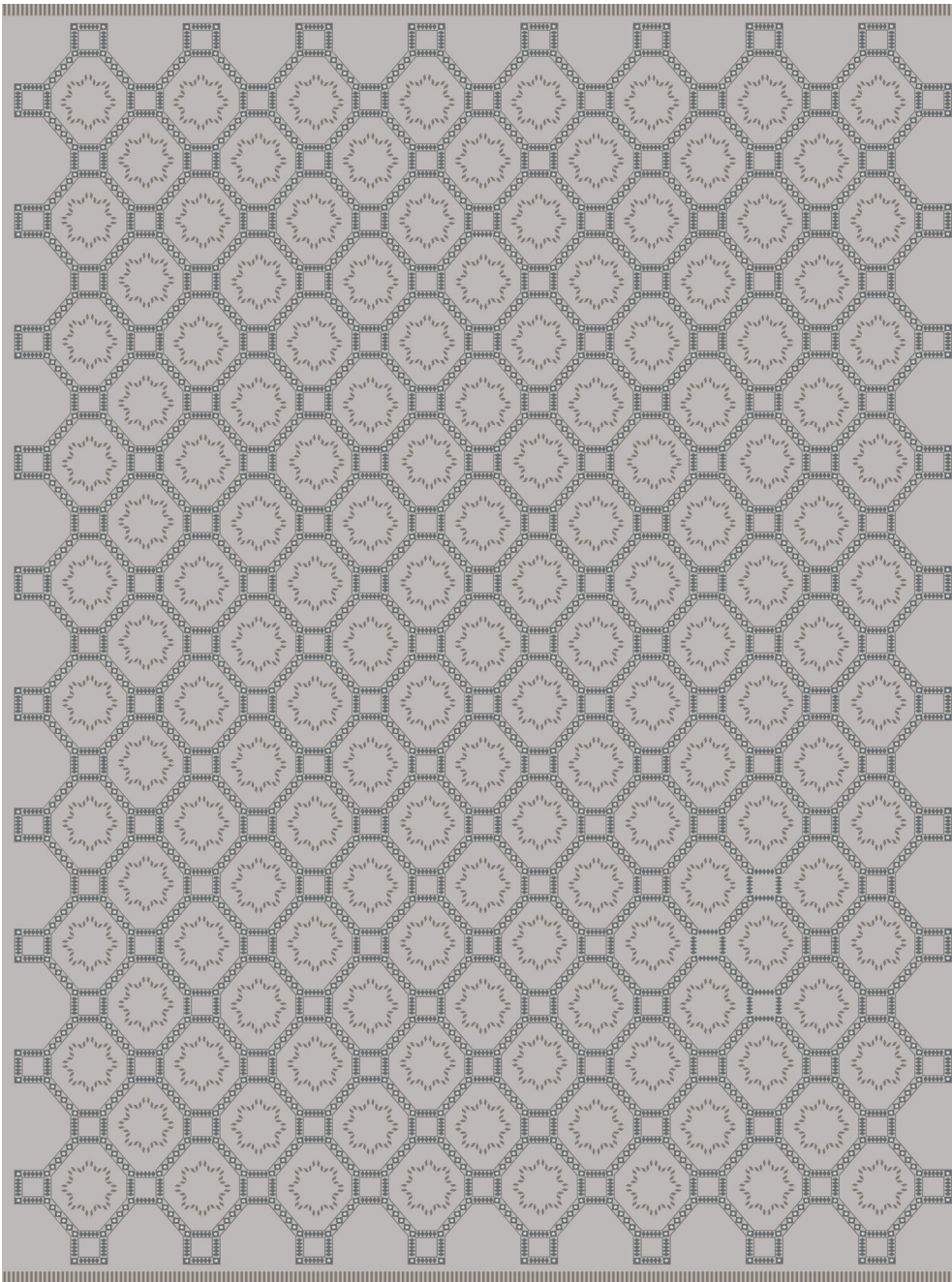
# PATTERSON FLYNN

©2024 PATTERSON FLYNN. ALL RIGHTS RESERVED.

# SYRUS

083236

**COLOR:** STONE BLUE **FIBER:** SILK **GROUP#** 517



ARTWORK FOR 9' X 12' RUG SHOWN



2' X 2' SAMPLE SHOWN



DETAIL SHOWN



DETAIL SHOWN

## ABOUT SYRUS:

CARRYING THE LOOK OF ANTIQUE MOSAIC TILE, OUR SYRUS RUG HAS A TRELLIS DESIGN INSPIRED BY A PIECE OF OTTOMAN-ERA EMBROIDERY. WHILE IT'S INFUSED WITH HISTORIC INFLUENCES, THE GRAPHIC PATTERNING STILL FEELS CLEAN AND CONTEMPORARY, AND THE MIXED-TEXTURE FLATWEAVE WITH CUT PILE MOTIFS IS SOFT, SOPHISTICATED, AND SUPREMELY USABLE.

# PATTERSON FLYNN

©2024 PATTERSON FLYNN. ALL RIGHTS RESERVED.