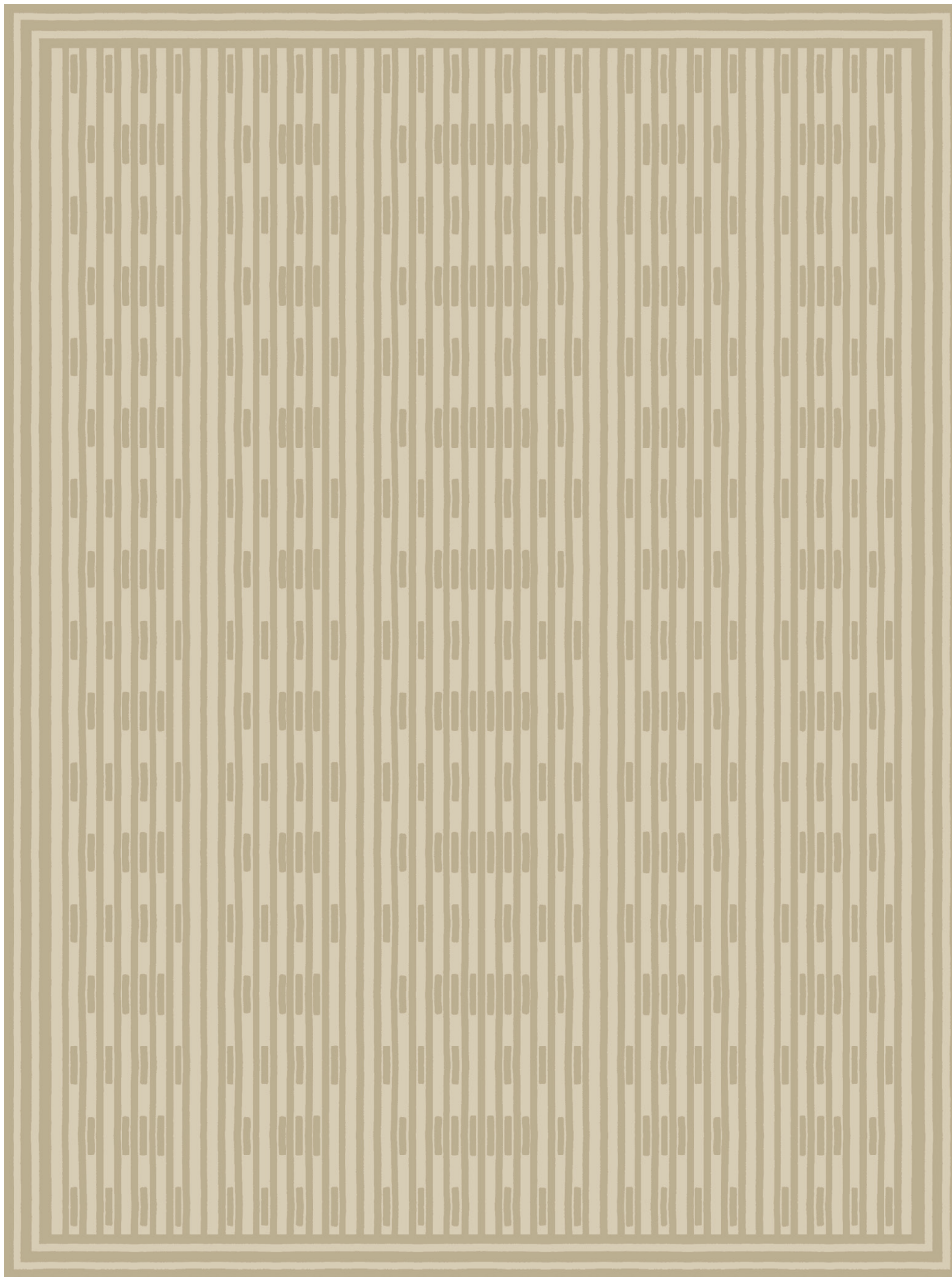


ASTRID

085659

COLOR: SAND **FIBER:** SILK & WOOL **GROUP#** 1148



ARTWORK FOR 9' X 12' RUG SHOWN



2' X 2' SAMPLE SHOWN



DETAIL SHOWN



DETAIL SHOWN

ABOUT ASTRID:

DESIGNED IN COLLABORATION WITH THOMAS O'BRIEN, OUR ASTRID RUG WAS INSPIRED BY A PATTERN BOOK OF ARTS AND CRAFTS CERAMICS AND IS A THOUGHTFUL INTERPRETATION ON THE CLASSIC STRIPE. THE RUG'S LYRICAL REPEATING BANDS AND SMALLER BARS HAVE A SIMPLE NEW ELEGANCE THAT'S PERFECTLY MATCHED TO SOOTHING MODERN SETTINGS, AND THE HAND-KNOTTED CONSTRUCTION FEATURES SILK LINEWORK THAT GLOW AGAINST THE WOOL GROUND.

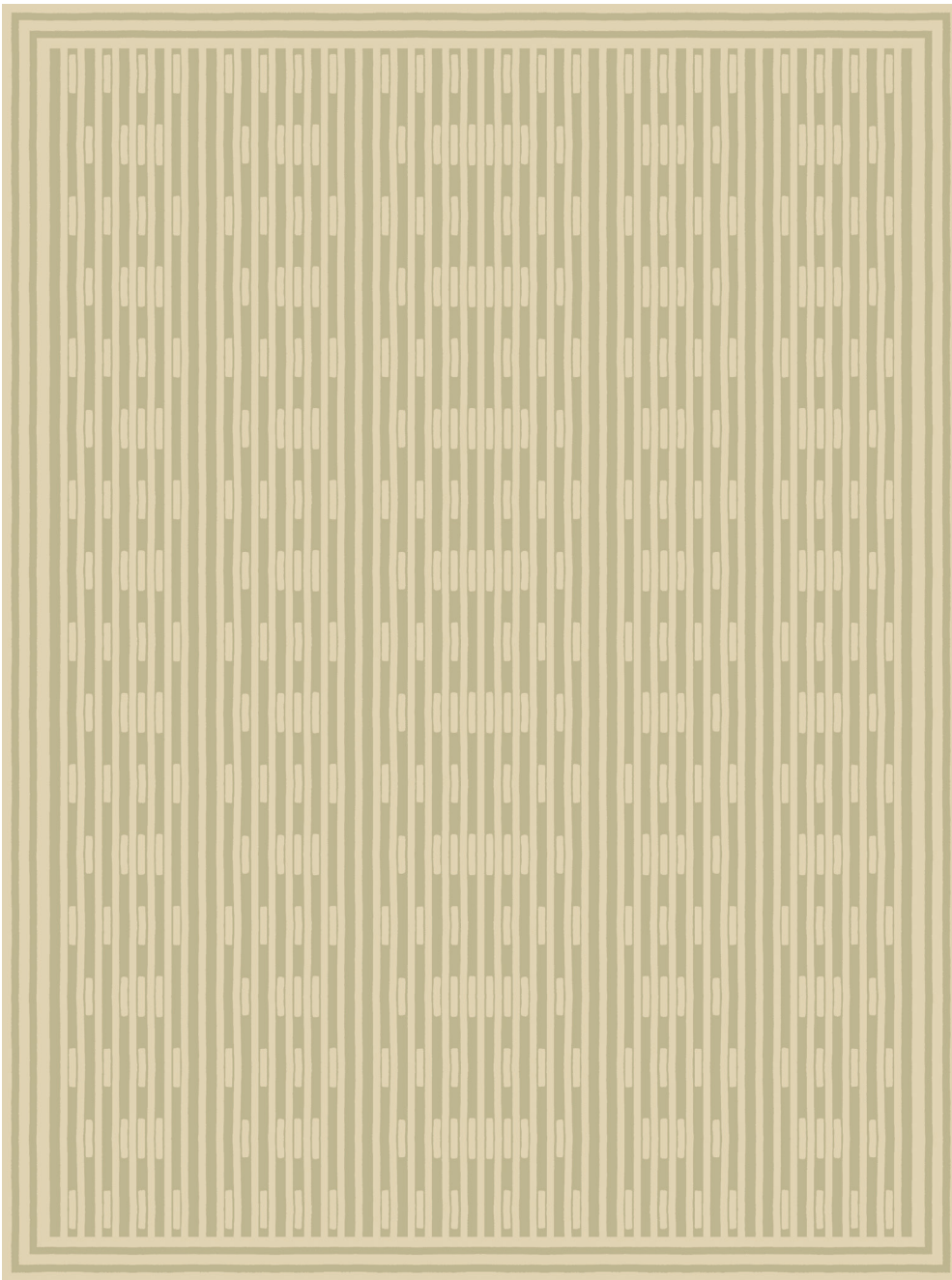
PATTERSON FLYNN

©2024 PATTERSON FLYNN. ALL RIGHTS RESERVED.

ASTRID

085657

COLOR: GREEN GOLD **FIBER:** SILK & WOOL **GROUP#** 1148



ARTWORK FOR 9' X 12' RUG SHOWN



2' X 2' SAMPLE SHOWN



DETAIL SHOWN



DETAIL SHOWN

ABOUT ASTRID:

DESIGNED IN COLLABORATION WITH THOMAS O'BRIEN, OUR ASTRID RUG WAS INSPIRED BY A PATTERN BOOK OF ARTS AND CRAFTS CERAMICS AND IS A THOUGHTFUL INTERPRETATION ON THE CLASSIC STRIPE. THE RUG'S LYRICAL REPEATING BANDS AND SMALLER BARS HAVE A SIMPLE NEW ELEGANCE THAT'S PERFECTLY MATCHED TO SOOTHING MODERN SETTINGS, AND THE HAND-KNOTTED CONSTRUCTION FEATURES SILK LINEWORK THAT GLOW AGAINST THE WOOL GROUND.

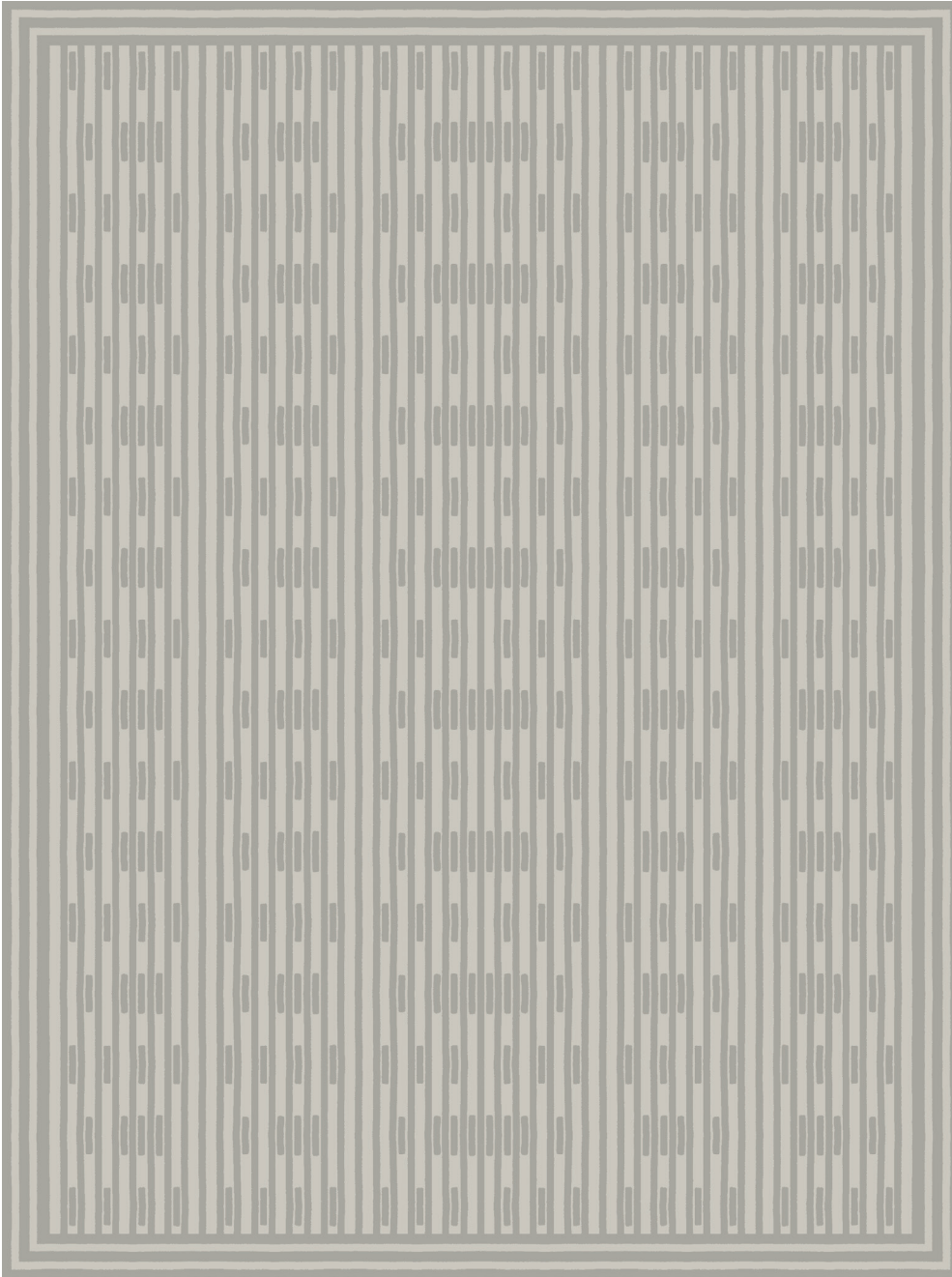
PATTERSON FLYNN

©2024 PATTERSON FLYNN. ALL RIGHTS RESERVED.

ASTRID

085658

COLOR: SILVER CLOUD **FIBER:** SILK & WOOL **GROUP#** 1148



ARTWORK FOR 9' X 12' RUG SHOWN



2' X 2' SAMPLE SHOWN



DETAIL SHOWN



DETAIL SHOWN

ABOUT ASTRID:

DESIGNED IN COLLABORATION WITH THOMAS O'BRIEN, OUR ASTRID RUG WAS INSPIRED BY A PATTERN BOOK OF ARTS AND CRAFTS CERAMICS AND IS A THOUGHTFUL INTERPRETATION ON THE CLASSIC STRIPE. THE RUG'S LYRICAL REPEATING BANDS AND SMALLER BARS HAVE A SIMPLE NEW ELEGANCE THAT'S PERFECTLY MATCHED TO SOOTHING MODERN SETTINGS, AND THE HAND-KNOTTED CONSTRUCTION FEATURES SILK LINEWORK THAT GLOW AGAINST THE WOOL GROUND.

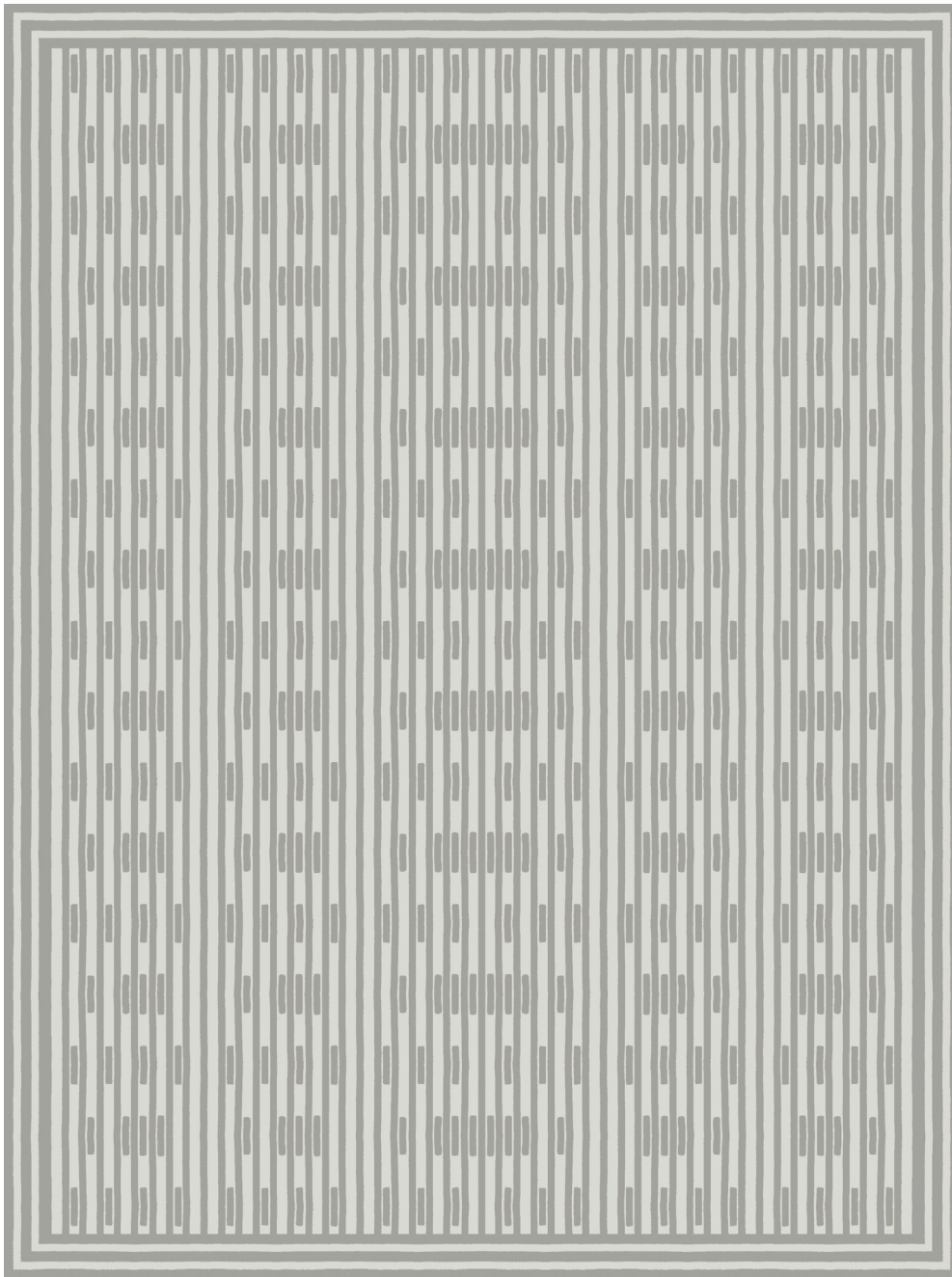
PATTERSON FLYNN

©2024 PATTERSON FLYNN. ALL RIGHTS RESERVED.

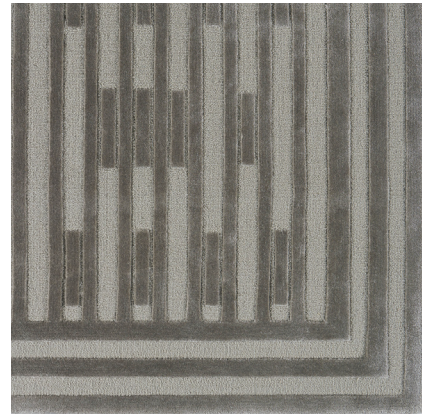
ASTRID

085649

COLOR: GREY **FIBER:** WOOL & SILK **GROUP#** 1104



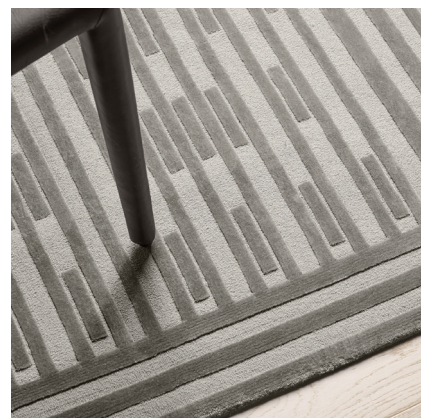
ARTWORK FOR 9' X 12' RUG SHOWN



2' X 2' SAMPLE SHOWN



DETAIL SHOWN



DETAIL SHOWN

ABOUT ASTRID:

DESIGNED IN COLLABORATION WITH THOMAS O'BRIEN, OUR ASTRID RUG WAS INSPIRED BY A ATTERN BOOK OF ARTS AND CRAFTS CERAMICS AND IS A THOUGHTFUL INTERPRETATION ON THE CLASSIC STRIPE. THE RUG'S LYRICAL REPEATING BANDS AND SMALLER BARS HAVE A SIMPLE NEW ELEGANCE THAT'S PERFECTLY MATCHED TO SOOTHING MODERN SETTINGS, AND THE HAND-TUFTED CONSTRUCTION FEATURES LUXURIOUS SILK LINEWORK THAT STAND OUT AGAINST THE WOOL GROUND.

PATTERSON FLYNN

©2024 PATTERSON FLYNN. ALL RIGHTS RESERVED.