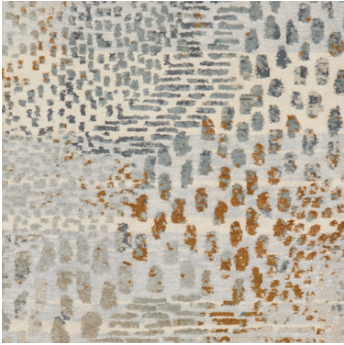


**PFM**

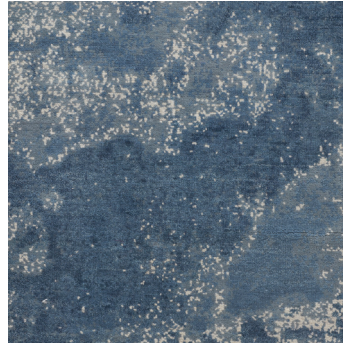
**COLLECTION AT A GLANCE**



**GUILIANO**  
HAND-KNOTTED SILK & WOOL  
**76138**



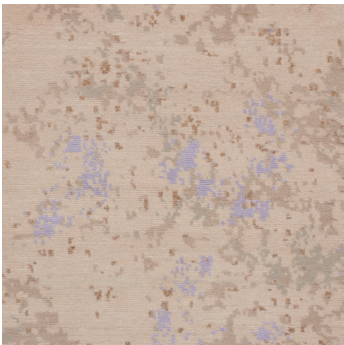
**BRUSHED**  
HAND-KNOTTED WOOL & SILK  
**68954**



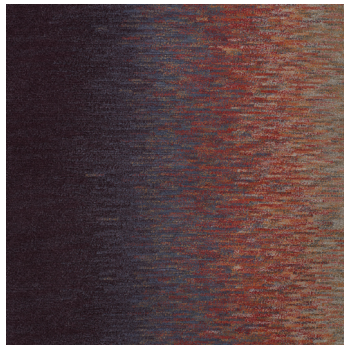
**GERDA**  
HAND-KNOTTED WOOL & SILK  
**73641**



**EXPRESSION**  
HAND-KNOTTED WOOL & SILK  
**68951**



**EXPRESSION**  
HAND-KNOTTED WOOL & SILK  
**68952**



**FIREFLY**  
HAND-KNOTTED WOOL & SILK  
**73001**



**COLLAGE**  
HAND-KNOTTED WOOL & SILK  
**68944**



**RYDER**  
HAND-KNOTTED WOOL & SILK  
**75350**

*DON'T FORGET—ANY OF THESE PATTERNS CAN BE CUSTOMIZED!*

**ABSTRACT**

Silk and wool are used in various combinations to give each of these abstract, contemporary designs a distinct look with unique textural definition and fascinating depth.

**PATTERSONFLYNNMARTIN.COM**

©2019 PATTERSON FLYNN MARTIN. ALL RIGHTS RESERVED.



**ABSTRACT**



**73641** IN INDIGO BLUE  
*ACTUAL 9' X 12' RUG SHOWN*

**GERDA**

**CONSTRUCTION:** HAND-KNOTTED

**FIBER:** WOOL & SILK

**PATTERSONFLYNNMARTIN.COM**

©2019 PATTERSON FLYNN MARTIN. ALL RIGHTS RESERVED.

*CUSTOM OPTIONS AVAILABLE*



ABSTRACT



**76138** IN BEACH  
ACTUAL 9' X 12' RUG SHOWN

## **GUILIANO**

**CONSTRUCTION:** HAND-KNOTTED

**FIBER:** SILK & WOOL

**[PATTERSONFLYNNMARTIN.COM](http://PATTERSONFLYNNMARTIN.COM)**

©2019 PATTERSON FLYNN MARTIN. ALL RIGHTS RESERVED.

*CUSTOM OPTIONS AVAILABLE*