

BIÉTRY

093088

COLOR: GARDEN MULTI **FIBER:** ABACA **GROUP#** 900



9' X 12' RUG SHOWN



2' X 2' SAMPLE SHOWN



DETAIL SHOWN



DETAIL SHOWN

ABOUT BIÉTRY:

DESIGNED IN COLLABORATION WITH FASHION DESIGNER VICTOR GLEMAUD, BIÉTRY IS A DELICATE REINTERPRETATION OF AN ANTIQUE TEXTILE WITH TWO CONTRASTING PATTERNS SEWN TOGETHER, WHICH GLEMAUD FOUND ON HIS TRAVELS. THE CENTRAL GROUND FEATURES A GRID OF GEOMETRIC MEDALLIONS DONE IN A BROKEN CROSS-STITCH PATTERN THAT GIVES THE BRAIDED ABACA AN IKAT-LIKE QUALITY; THE SHAPED BORDER, MEANWHILE, IS A WREATH OF WHIMSICAL FLOWERS DONE IN COILED ABACA.

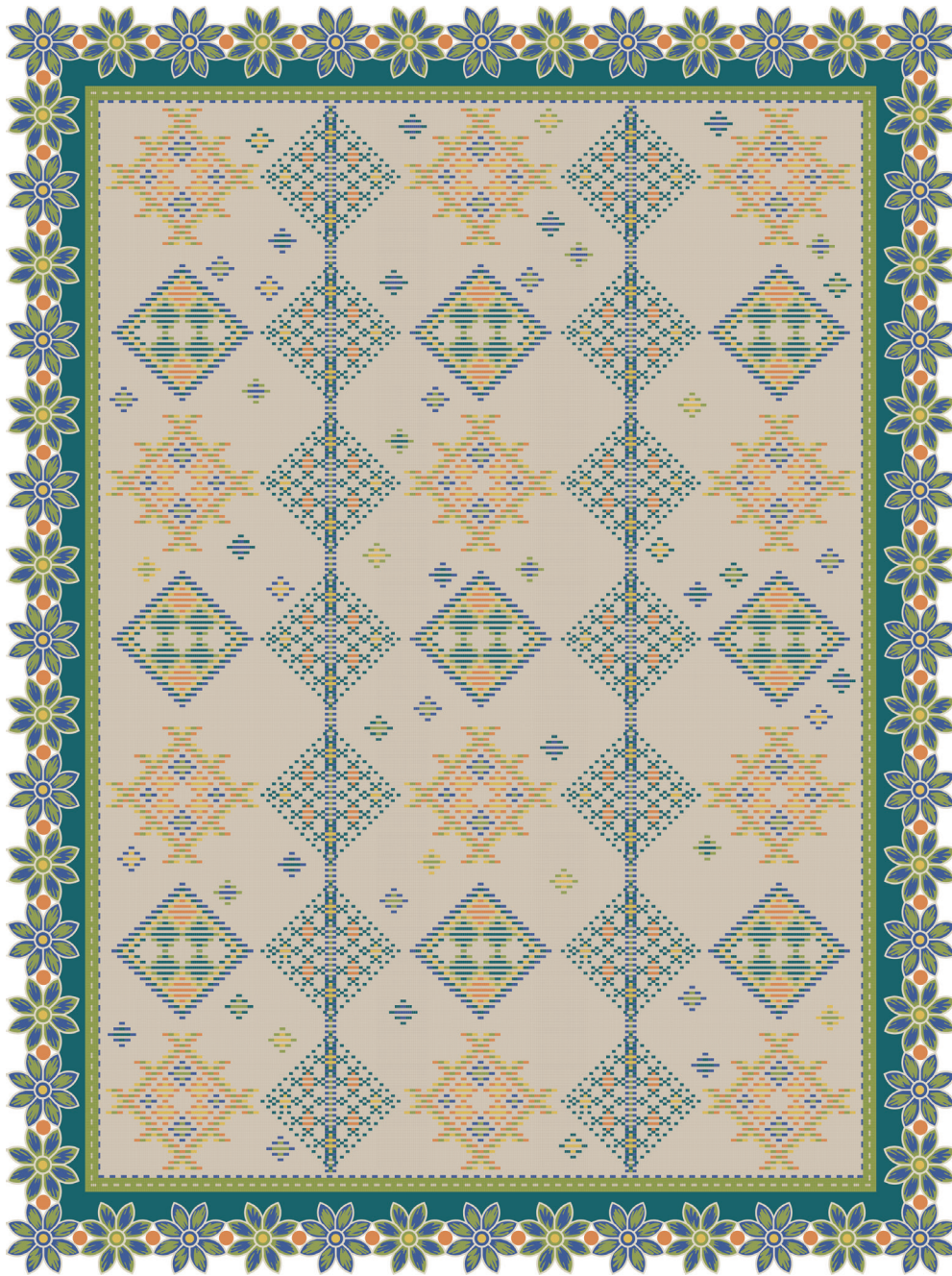
PATTERSON FLYNN

©2025 PATTERSON FLYNN. ALL RIGHTS RESERVED.

BIÉTRY

093087

COLOR: BRIGHT MULTI **FIBER:** ABACA **GROUP#** 900



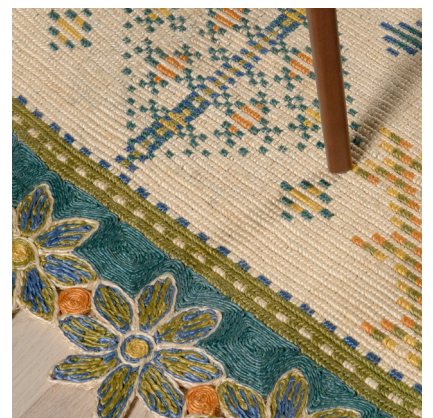
9' X 12' ARTWORK SHOWN



2' X 2' SAMPLE SHOWN



DETAIL SHOWN



DETAIL SHOWN

ABOUT BIÉTRY:

DESIGNED IN COLLABORATION WITH FASHION DESIGNER VICTOR GLEMAUD, BIÉTRY IS A DELICATE REINTERPRETATION OF AN ANTIQUE TEXTILE WITH TWO CONTRASTING PATTERNS SEWN TOGETHER, WHICH GLEMAUD FOUND ON HIS TRAVELS. THE CENTRAL GROUND FEATURES A GRID OF GEOMETRIC MEDALLIONS DONE IN A BROKEN CROSS-STITCH PATTERN THAT GIVES THE BRAIDED ABACA AN IKAT-LIKE QUALITY; THE SHAPED BORDER, MEANWHILE, IS A WREATH OF WHIMSICAL FLOWERS DONE IN COILED ABACA.

PATTERSON FLYNN

©2025 PATTERSON FLYNN. ALL RIGHTS RESERVED.