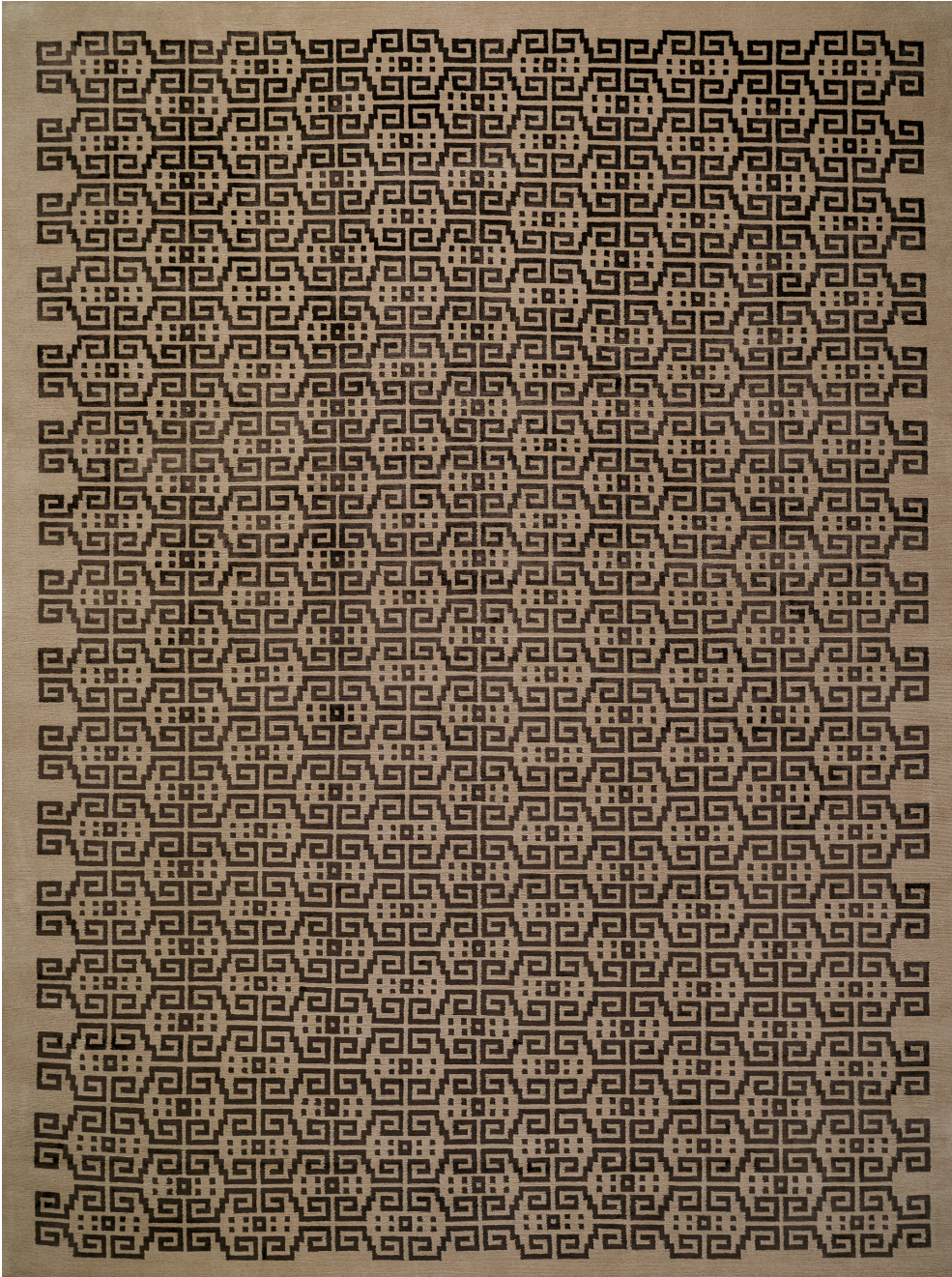


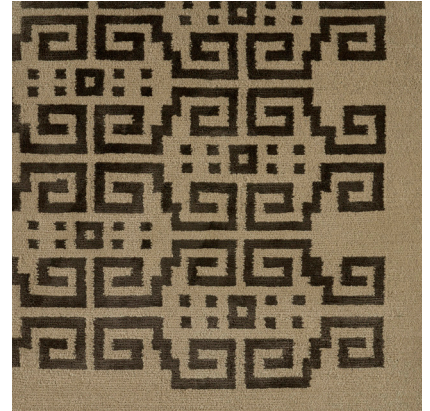
**CALIX**

075820

**COLOR:** ESPRESSO **FIBER:** SILK & WOOL **GROUP#** 517



9' X 12' RUG SHOWN



2' X 2' SAMPLE SHOWN



DETAIL SHOWN



DETAIL SHOWN

**ABOUT CALIX:**

THE ELONGATED GREEK KEY THAT SLINKS GLAMOROUSLY ACROSS OUR CALIX RUG IS BASED ON A REFINED 1940S KNITTING PATTERN. THE FINE FILIGREE-LIKE LINES ARE DONE IN HAND-KNOTTED TIBETAN SILK, WHICH STANDS OUT IN HIGH CONTRAST AGAINST THE WOOL BACKGROUND.

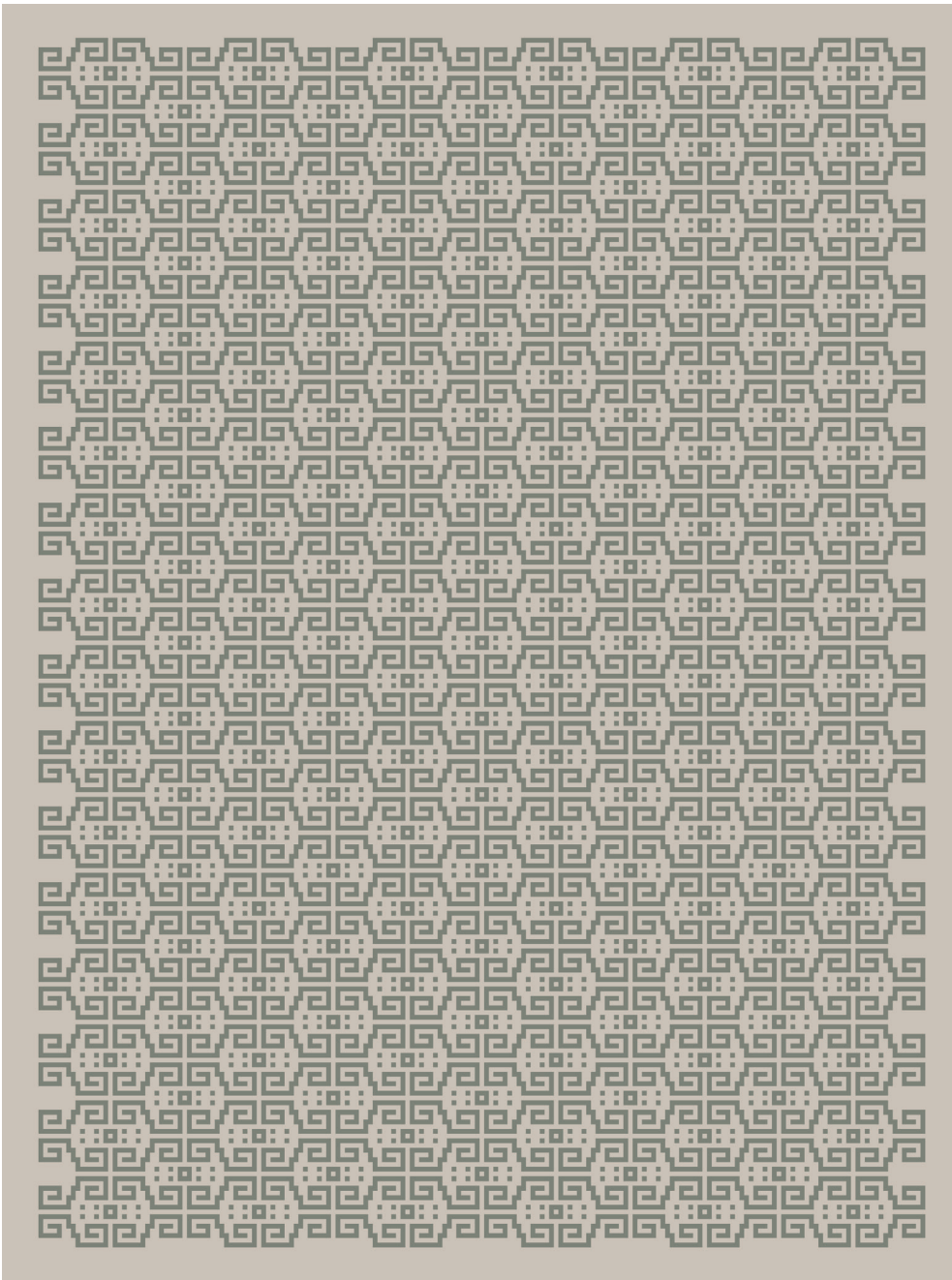
PATTERSON FLYNN

©2023 PATTERSON FLYNN. ALL RIGHTS RESERVED.

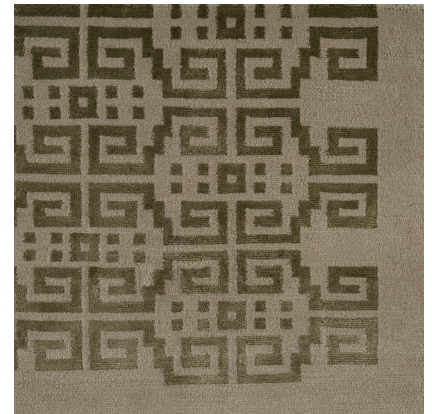
**CALIX**

075821

**COLOR:** MOSS **FIBER:** SILK & WOOL **GROUP#** 517



ARTWORK FOR 9' X 12' RUG SHOWN



2' X 2' SAMPLE SHOWN



DETAIL SHOWN



DETAIL SHOWN

**ABOUT CALIX:**

THE ELONGATED GREEK KEY THAT SLINKS GLAMOROUSLY ACROSS OUR CALIX RUG IS BASED ON A REFINED 1940S KNITTING PATTERN. THE FINE FILIGREE-LIKE LINES ARE DONE IN HAND-KNOTTED TIBETAN SILK, WHICH STANDS OUT IN HIGH CONTRAST AGAINST THE WOOL BACKGROUND.

PATTERSON FLYNN

©2023 PATTERSON FLYNN. ALL RIGHTS RESERVED.

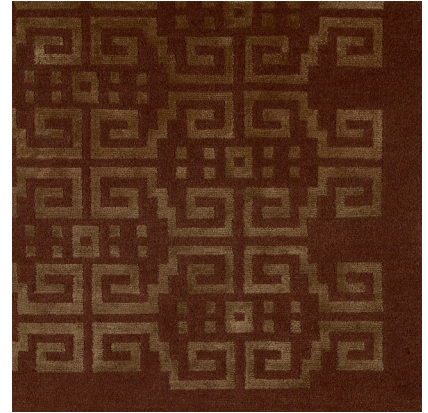
**CALIX**

075819

**COLOR:** MAHOGANY **FIBER:** SILK & WOOL **GROUP#** 517



ARTWORK FOR 9' X 12' RUG SHOWN



2' X 2' SAMPLE SHOWN



DETAIL SHOWN



DETAIL SHOWN

**ABOUT CALIX:**

THE ELONGATED GREEK KEY THAT SLINKS GLAMOROUSLY ACROSS OUR CALIX RUG IS BASED ON A REFINED 1940S KNITTING PATTERN. THE FINE FILIGREE-LIKE LINES ARE DONE IN HAND-KNOTTED TIBETAN SILK, WHICH STANDS OUT IN HIGH CONTRAST AGAINST THE WOOL BACKGROUND.

PATTERSON FLYNN

©2023 PATTERSON FLYNN. ALL RIGHTS RESERVED.