

**CATANYA**

087564

**COLOR:** DELFT **FIBER:** WOOL **GROUP#** 1074



9' X 12' RUG SHOWN



2' X 2' SAMPLE SHOWN



DETAIL SHOWN



DETAIL SHOWN

**ABOUT CATANYA:**

A TAKE ON PORTUGUESE TILEWORK, CATANYA FEATURES A SINGLE, DELICATELY DETAILED MOTIF ARRANGED INTO A TRELIS PATTERN WITH A PLEASINGLY ORGANIC RHYTHM. THE NEEDLEPOINT CONSTRUCTION GIVES THIS WOOL RUG A VINTAGE APPEAL, WHILE THE CLEAN MONOCHROME PALETTE, GRIDDED DESIGN, AND THIN CONTRASTING BORDER MAKE IT MODERN.

**PATTERSON FLYNN**

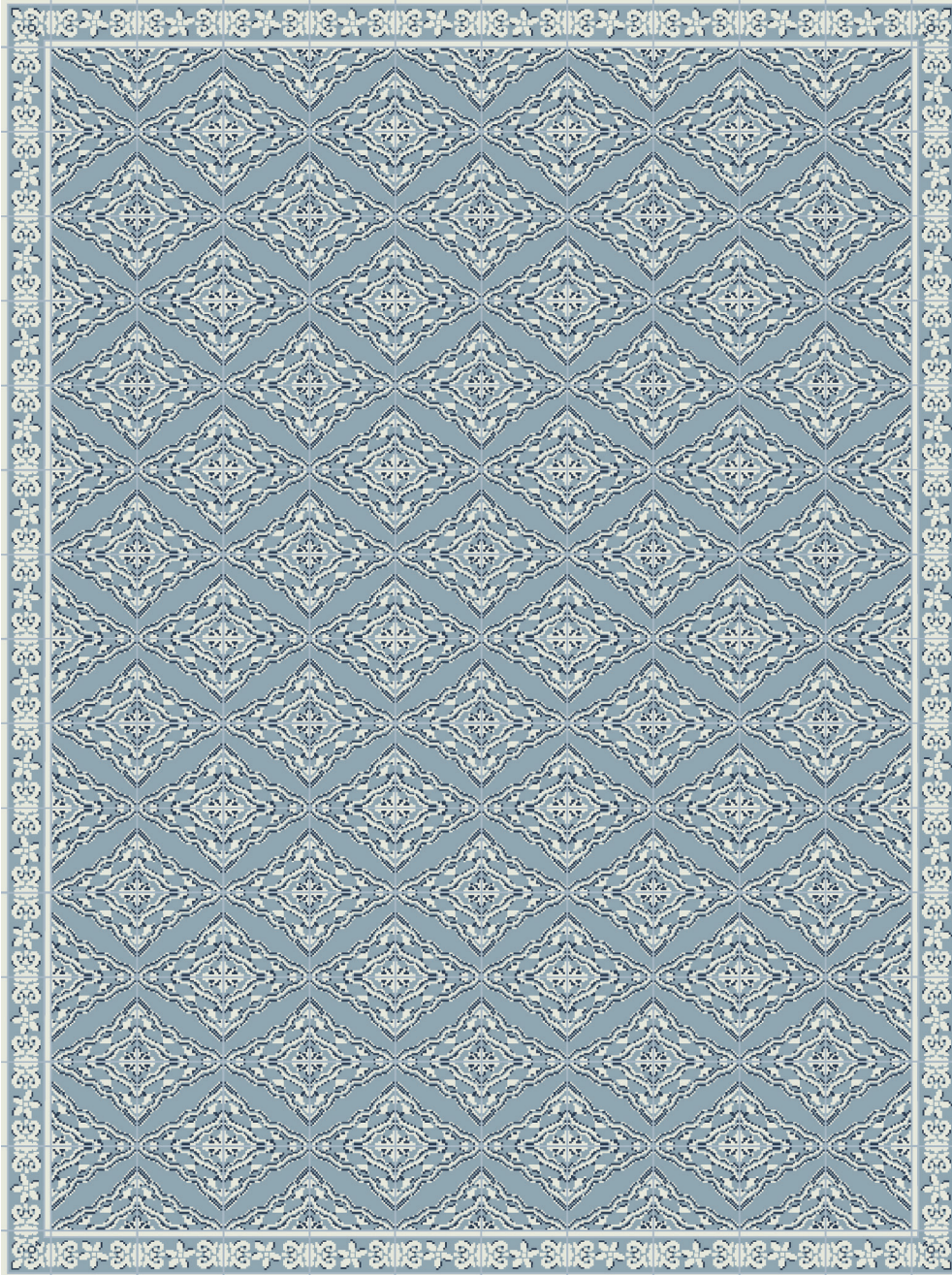
©2024 PATTERSON FLYNN. ALL RIGHTS RESERVED.



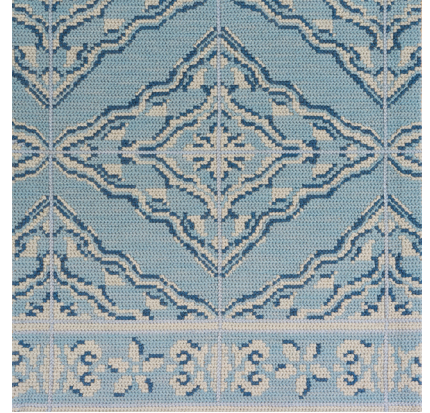
**CATANYA**

087565

**COLOR:** ANTIQUE TURQUOISE **FIBER:** WOOL **GROUP#** 1074



ARTWORK FOR 9' X 12' RUG SHOWN



2' X 2' SAMPLE SHOWN



DETAIL SHOWN



DETAIL SHOWN

**ABOUT CATANYA:**

A TAKE ON PORTUGUESE TILEWORK, CATANYA FEATURES A SINGLE, DELICATELY DETAILED MOTIF ARRANGED INTO A TRELIS PATTERN WITH A PLEASINGLY ORGANIC RHYTHM. THE NEEDLEPOINT CONSTRUCTION GIVES THIS WOOL RUG A VINTAGE APPEAL, WHILE THE CLEAN MONOCHROME PALETTE, GRIDDED DESIGN, AND THIN CONTRASTING BORDER MAKE IT MODERN.

**PATTERSON FLYNN**

©2024 PATTERSON FLYNN. ALL RIGHTS RESERVED.



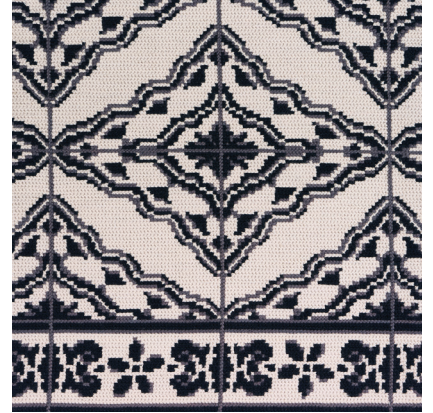
**CATANYA**

087563

**COLOR:** NOIR **FIBER:** WOOL **GROUP#** 1074



9' X 12' RUG SHOWN



2' X 2' SAMPLE SHOWN



DETAIL SHOWN



DETAIL SHOWN

**ABOUT CATANYA:**

A TAKE ON PORTUGUESE TILEWORK, CATANYA FEATURES A SINGLE, DELICATELY DETAILED MOTIF ARRANGED INTO A TRELLIS PATTERN WITH A PLEASINGLY ORGANIC RHYTHM. THE NEEDLEPOINT CONSTRUCTION GIVES THIS WOOL RUG A VINTAGE APPEAL, WHILE THE CLEAN MONOCHROME PALETTE, GRIDDED DESIGN, AND THIN CONTRASTING BORDER MAKE IT MODERN.

**PATTERSON FLYNN**

©2024 PATTERSON FLYNN. ALL RIGHTS RESERVED.