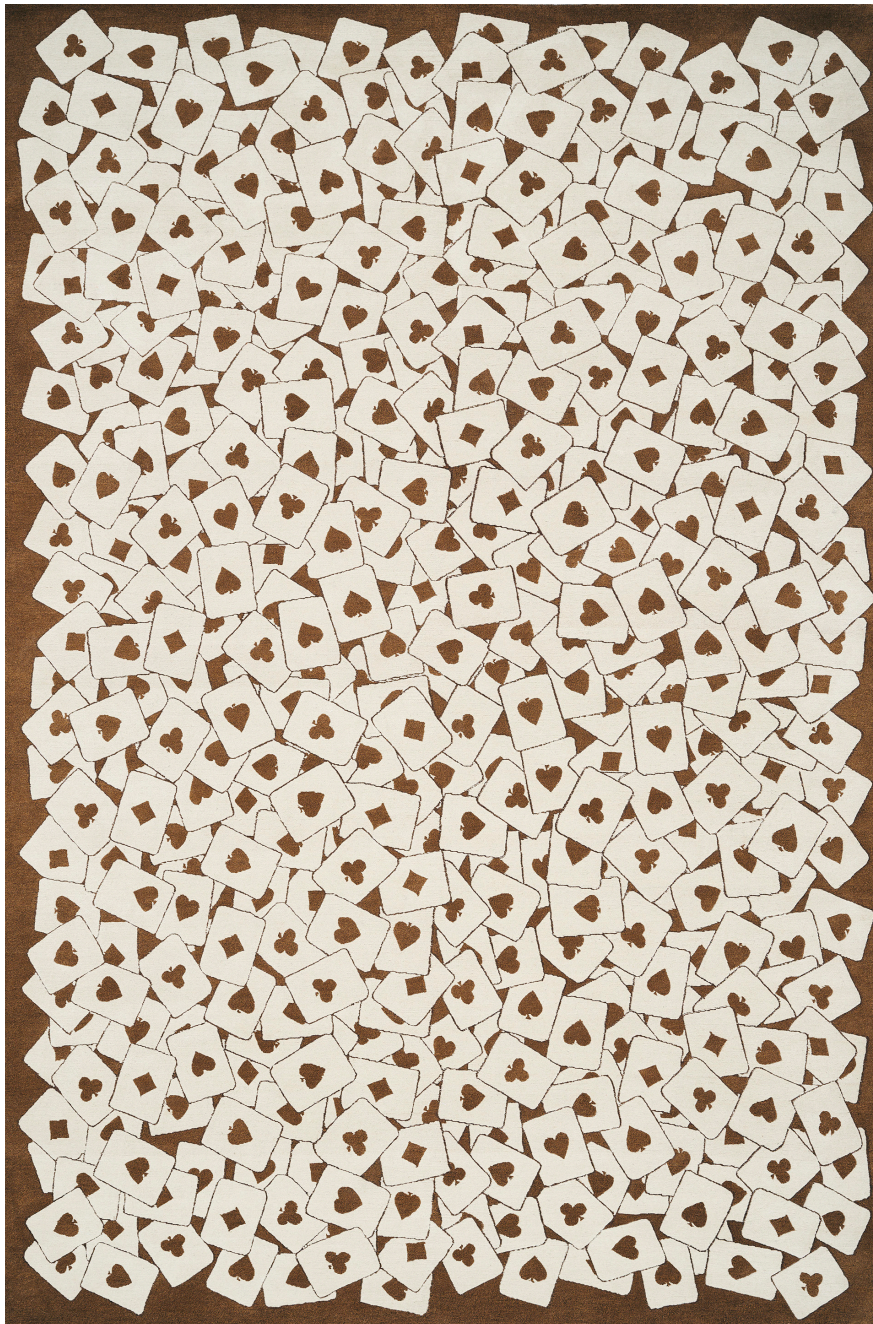


CHELSEY

040105

COLOR: BROWN **FIBER:** WOOL **GROUP#** 1062



ACTUAL 6' X 9' RUG SHOWN



2' X 2' SAMPLE SHOWN



DETAIL SHOWN



DETAIL SHOWN

ABOUT CHELSEY:

CHARLAP HYMAN & HERRERO'S CHELSEY RUG DEALS OUT A DRAMATIC HAND. CONSTRUCTED OF HAND-KNOTTED WOOL, THE OVERLAPPING CARDS COALESCE INTO A DELIGHTFULLY RANDOM, WHIMSICAL PATTERN THAT NODS TO THE THEATRICAL FLAIR OF CECIL BEATON AND EMILIO TERRY'S STATEMENT-MAKING FLOOR SHOWS FROM THE 1930S.

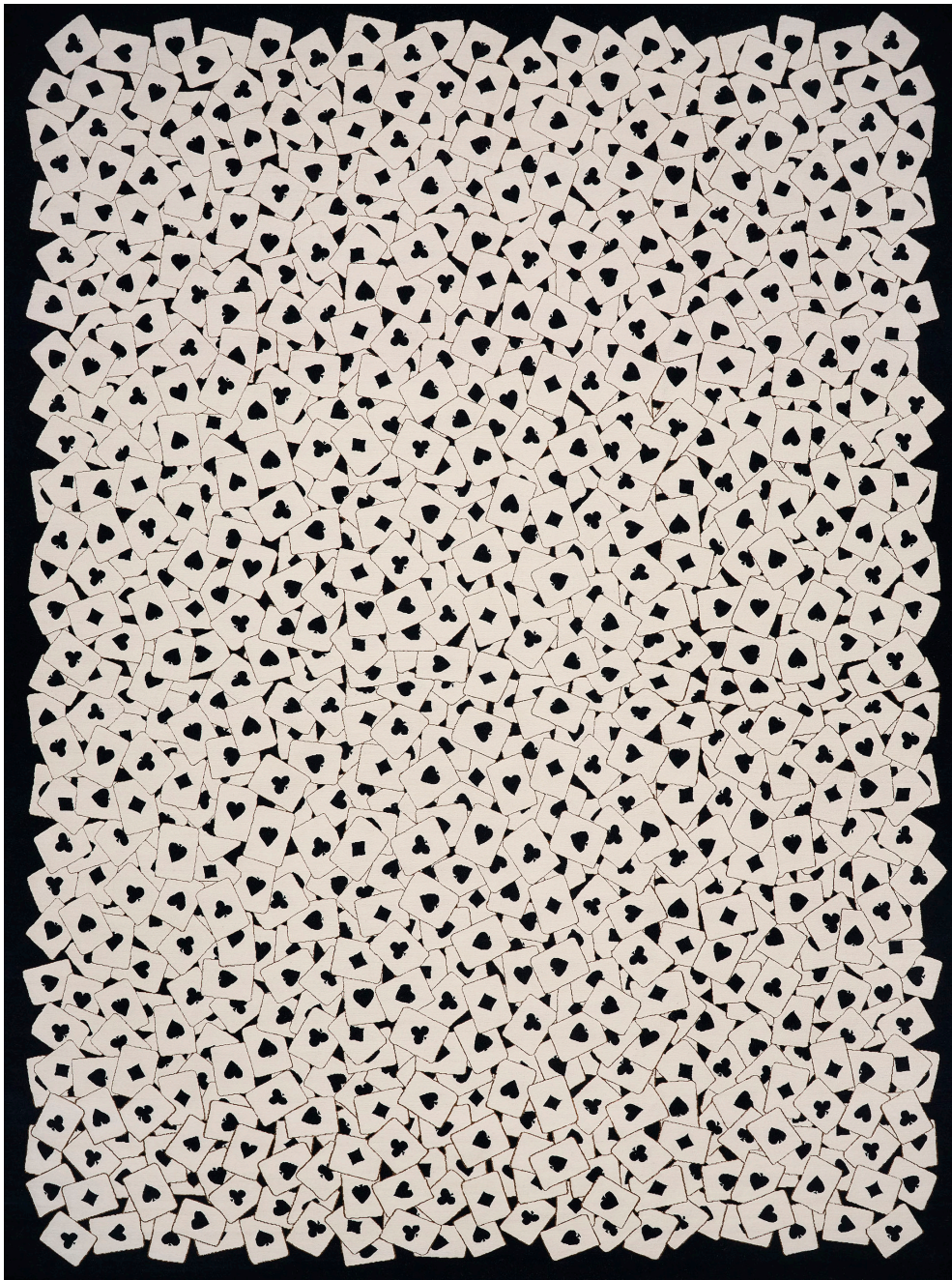
PATTERSON FLYNN

©2023 PATTERSON FLYNN. ALL RIGHTS RESERVED.

CHELSEY

040104

COLOR: BLACK & WHITE **FIBER:** WOOL **GROUP#** 1062



ACTUAL 9' X 12' RUG SHOWN



2' X 2' SAMPLE SHOWN



DETAIL SHOWN



DETAIL SHOWN

ABOUT CHELSEY:

CHARLAP HYMAN & HERRERO'S CHELSEY RUG DEALS OUT A DRAMATIC HAND. CONSTRUCTED OF HAND-KNOTTED WOOL, THE OVERLAPPING CARDS COALESCE INTO A DELIGHTFULLY RANDOM, WHIMSICAL PATTERN THAT NODS TO THE THEATRICAL FLAIR OF CECIL BEATON AND EMILIO TERRY'S STATEMENT-MAKING FLOOR SHOWS FROM THE 1930S.

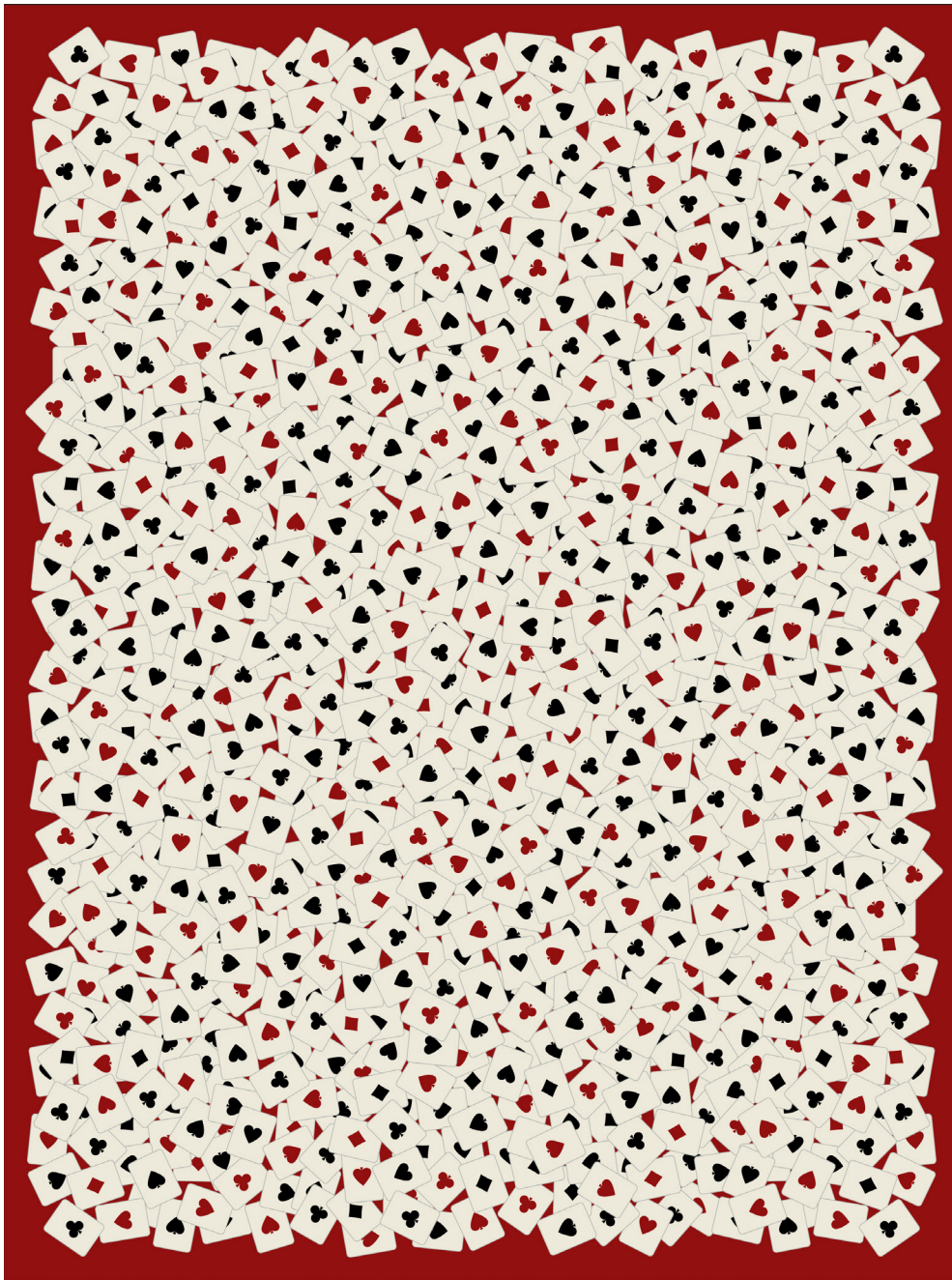
PATTERSON FLYNN

©2023 PATTERSON FLYNN. ALL RIGHTS RESERVED.

CHELSEY

040103

COLOR: RED **FIBER:** WOOL **GROUP#** 1062



ARTWORK FOR 9' X 12' RUG SHOWN



2' X 2' SAMPLE SHOWN



DETAIL SHOWN



DETAIL SHOWN

ABOUT CHELSEY:

CHARLAP HYMAN & HERRERO'S CHELSEY RUG DEALS OUT A DRAMATIC HAND. CONSTRUCTED OF HAND-KNOTTED WOOL, THE OVERLAPPING CARDS COALESCE INTO A DELIGHTFULLY RANDOM, WHIMSICAL PATTERN THAT NODS TO THE THEATRICAL FLAIR OF CECIL BEATON AND EMILIO TERRY'S STATEMENT-MAKING FLOOR SHOWS FROM THE 1930S.

PATTERSON FLYNN

©2023 PATTERSON FLYNN. ALL RIGHTS RESERVED.