

CHINTAMANI

083081

COLOR: SAFARI **FIBER:** WOOL **GROUP#** 1194



9' X 12' RUG SHOWN



2' X 2' SAMPLE SHOWN



DETAIL SHOWN



DETAIL SHOWN

ABOUT CHINTAMANI:

AN AUSPICIOUS OTTOMAN MOTIF THAT'S DECORATED EVERYTHING FROM TEXTILES AND TILES TO THE TOPKAPI PALACE DANCES LIGHTLY ACROSS THE FIELD OF OUR CHINTAMANI RUG. DONE IN HAND-KNOTTED WOOL, THIS FRESH INTERPRETATION OF A CLASSIC DESIGN IS FINISHED WITH AN ABRASH DYING TECHNIQUE THAT GIVES THE IRREGULAR STRIPES OF COLOR A SURPRISING DEPTH AND TONAL VARIATIONS.

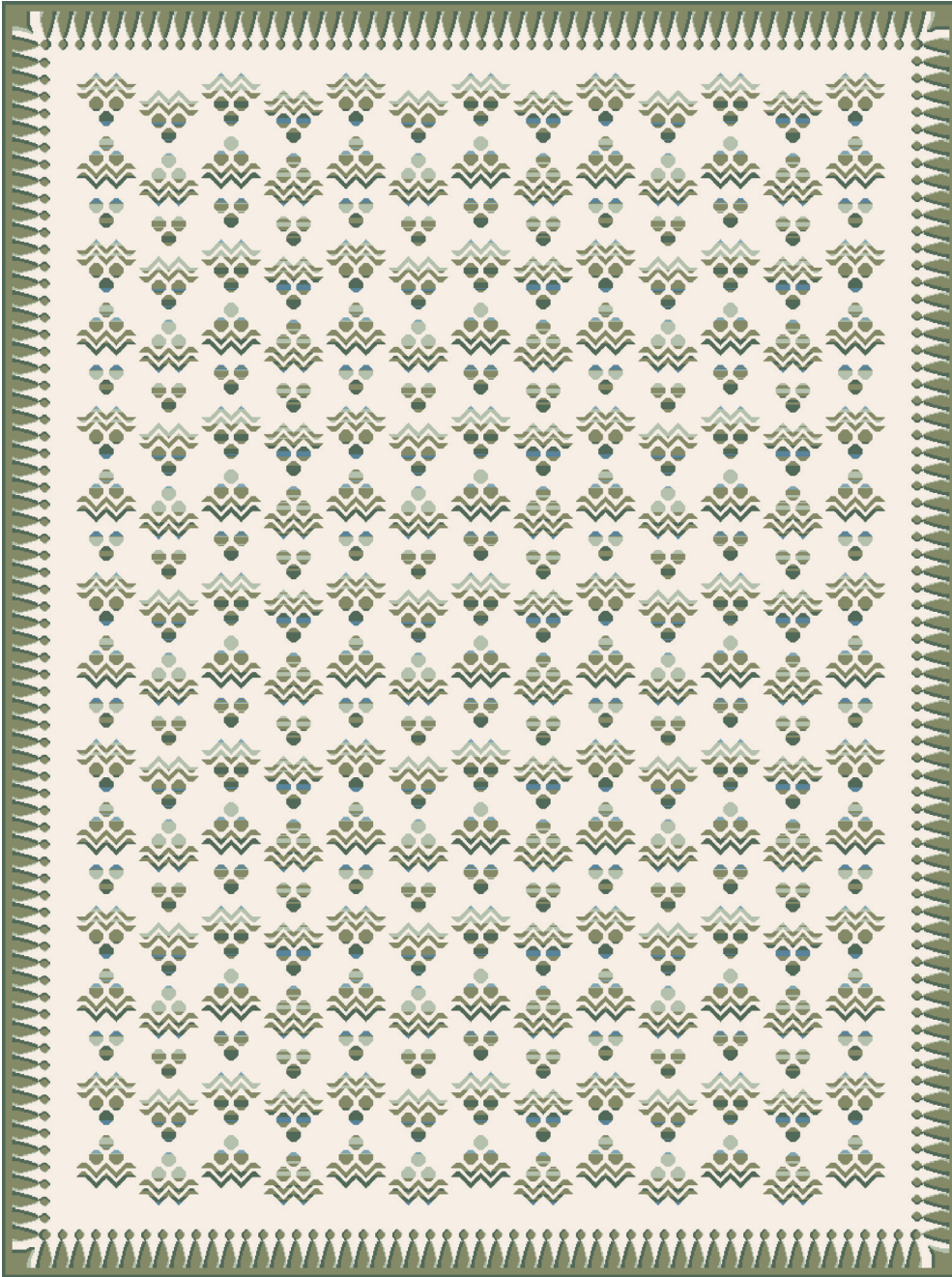
PATTERSON FLYNN

©2024 PATTERSON FLYNN. ALL RIGHTS RESERVED.

CHINTAMANI

083082

COLOR: FERN **FIBER:** WOOL **GROUP#** 1194



ARTWORK FOR 9' X 12' RUG SHOWN



2' X 2' SAMPLE SHOWN



DETAIL SHOWN



DETAIL SHOWN

ABOUT CHINTAMANI:

AN AUSPICIOUS OTTOMAN MOTIF THAT'S DECORATED EVERYTHING FROM TEXTILES AND TILES TO THE TOPKAPI PALACE DANCES LIGHTLY ACROSS THE FIELD OF OUR CHINTAMANI RUG. DONE IN HAND-KNOTTED WOOL, THIS FRESH INTERPRETATION OF A CLASSIC DESIGN IS FINISHED WITH AN ABRASH DYING TECHNIQUE THAT GIVES THE IRREGULAR STRIPES OF COLOR A SURPRISING DEPTH AND TONAL VARIATIONS.

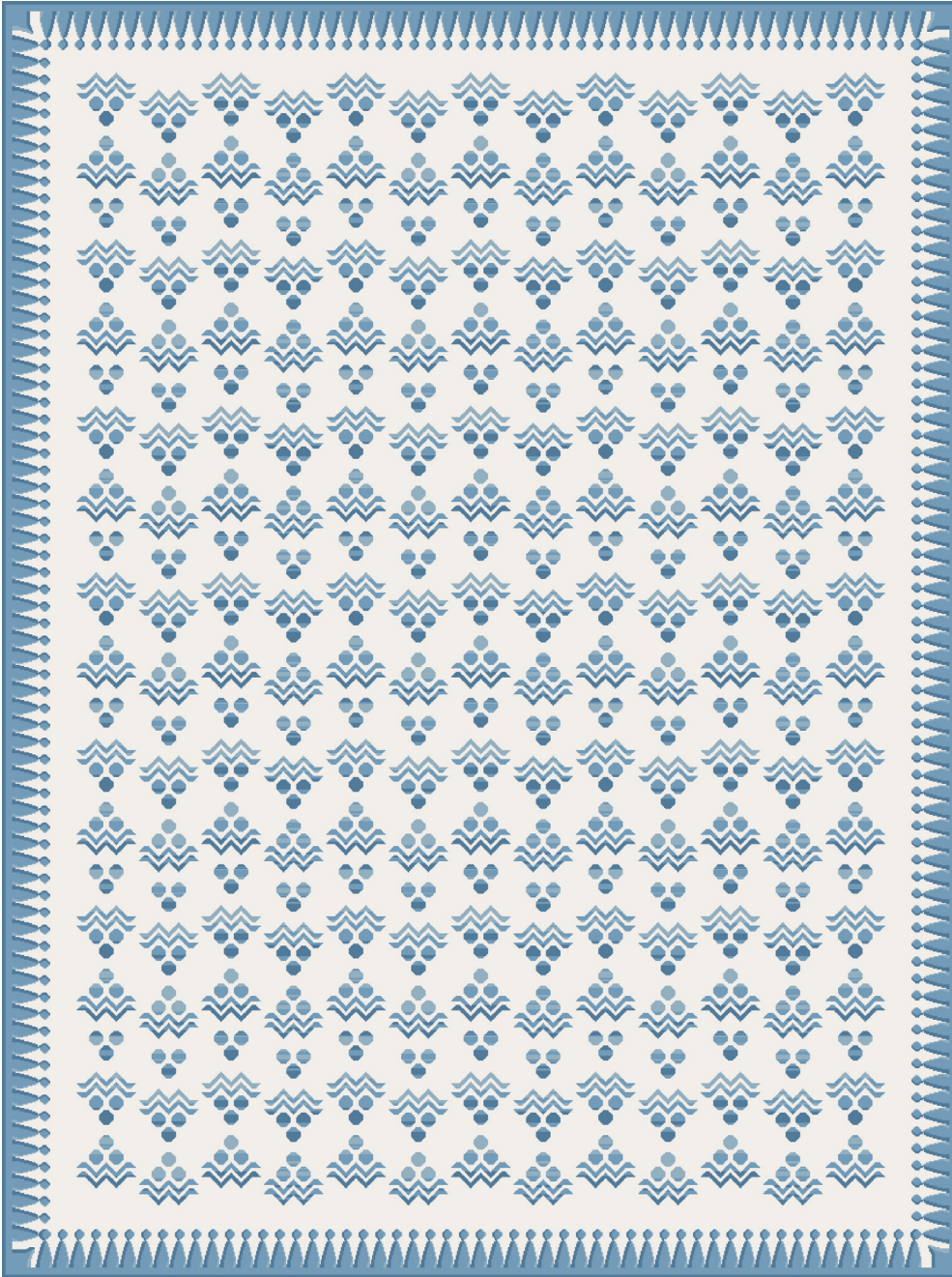
PATTERSON FLYNN

©2024 PATTERSON FLYNN. ALL RIGHTS RESERVED.

CHINTAMANI

083080

COLOR: DELFT BLUE **FIBER:** WOOL **GROUP#** 1194



ARTWORK FOR 9' X 12' RUG SHOWN



2' X 2' SAMPLE SHOWN



DETAIL SHOWN



DETAIL SHOWN

ABOUT CHINTAMANI:

AN AUSPICIOUS OTTOMAN MOTIF THAT'S DECORATED EVERYTHING FROM TEXTILES AND TILES TO THE TOPKAPI PALACE DANCES LIGHTLY ACROSS THE FIELD OF OUR CHINTAMANI RUG. DONE IN HAND-KNOTTED WOOL, THIS FRESH INTERPRETATION OF A CLASSIC DESIGN IS FINISHED WITH AN ABRASH DYEING TECHNIQUE THAT GIVES THE IRREGULAR STRIPES OF COLOR A SURPRISING DEPTH AND TONAL VARIATIONS.

PATTERSON FLYNN

©2024 PATTERSON FLYNN. ALL RIGHTS RESERVED.