

COLOR FIELD

094801

COLOR: WILDFLOWER **FIBER:** WOOL **GROUP#** 1188



9' X 12' RUG SHOWN



2' X 2' SAMPLE SHOWN



DETAIL SHOWN



DETAIL SHOWN

ABOUT COLOR FIELD:

TAKING ITS CUES FROM JAPANESE DESIGN, COLOR FIELD EVOKES THE ARTISTRY OF HAND WOVEN IKATS AND THE ENDURING SPIRIT OF BORO—THE TIME-HONORED PRACTICE OF PATCHING AND MENDING WITH CARE. WITH ITS PAINTERLY EFFECTS AND COLORS THAT BLUR AND FEATHER INTO EACH OTHER, THIS WOOL FLATWEAVE GIVES THE APPEARANCE OF FOUR PANELS SEWN TOGETHER. CRAFTED FROM HANDSPUN WOOL AND DONE WITH AN ABRASH DYEING TECHNIQUE, THE RUG CELEBRATES SUBTLE IRREGULARITIES AND ARTISTRY OF THE HAND.

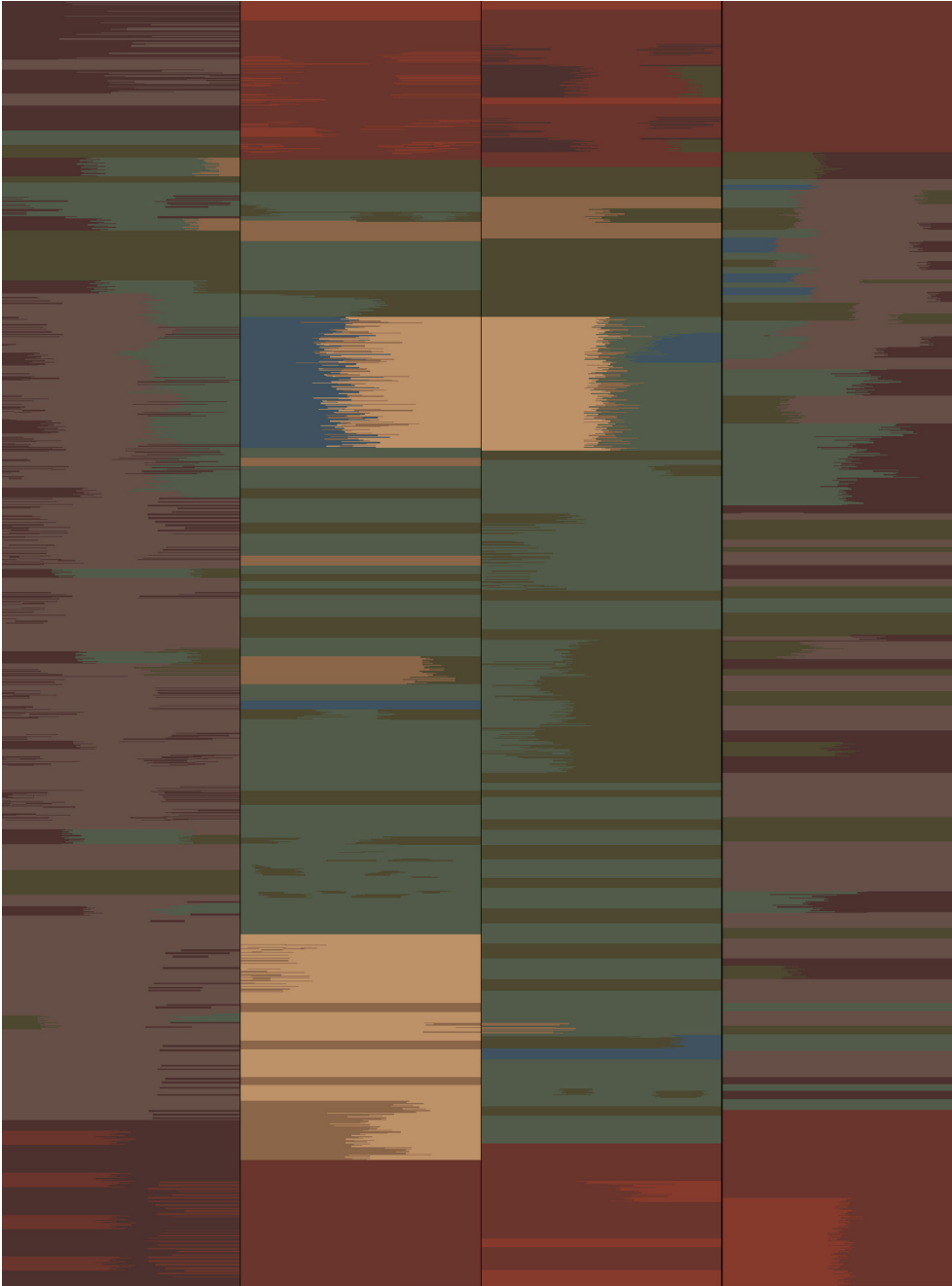
PATTERSON FLYNN

©2025 PATTERSON FLYNN. ALL RIGHTS RESERVED.

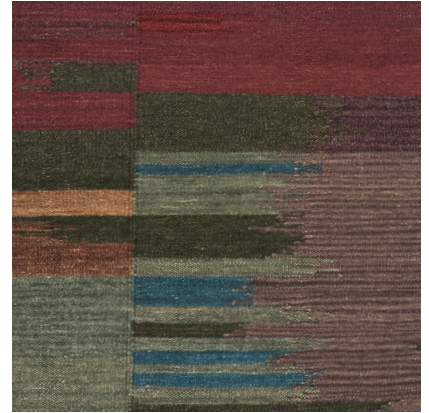
COLOR FIELD

094799

COLOR: AUBERGINE & MOSS **FIBER:** WOOL **GROUP#** 1188



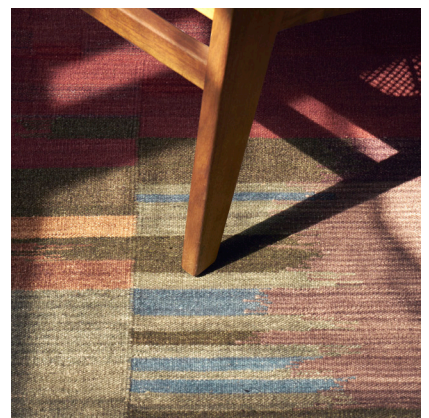
9' X 12' ARTWORK SHOWN



2' X 2' SAMPLE SHOWN



DETAIL SHOWN



DETAIL SHOWN

ABOUT COLOR FIELD:

TAKING ITS CUES FROM JAPANESE DESIGN, COLOR FIELD EVOKES THE ARTISTRY OF HAND WOVEN IKATS AND THE ENDURING SPIRIT OF BORO—THE TIME-HONORED PRACTICE OF PATCHING AND MENDING WITH CARE. WITH ITS PAINTERLY EFFECTS AND COLORS THAT BLUR AND FEATHER INTO EACH OTHER, THIS WOOL FLATWEAVE GIVES THE APPEARANCE OF FOUR PANELS SEWN TOGETHER. CRAFTED FROM HANDSPUN WOOL AND DONE WITH AN ABRASH DYEING TECHNIQUE, THE RUG CELEBRATES SUBTLE IRREGULARITIES AND ARTISTRY OF THE HAND.

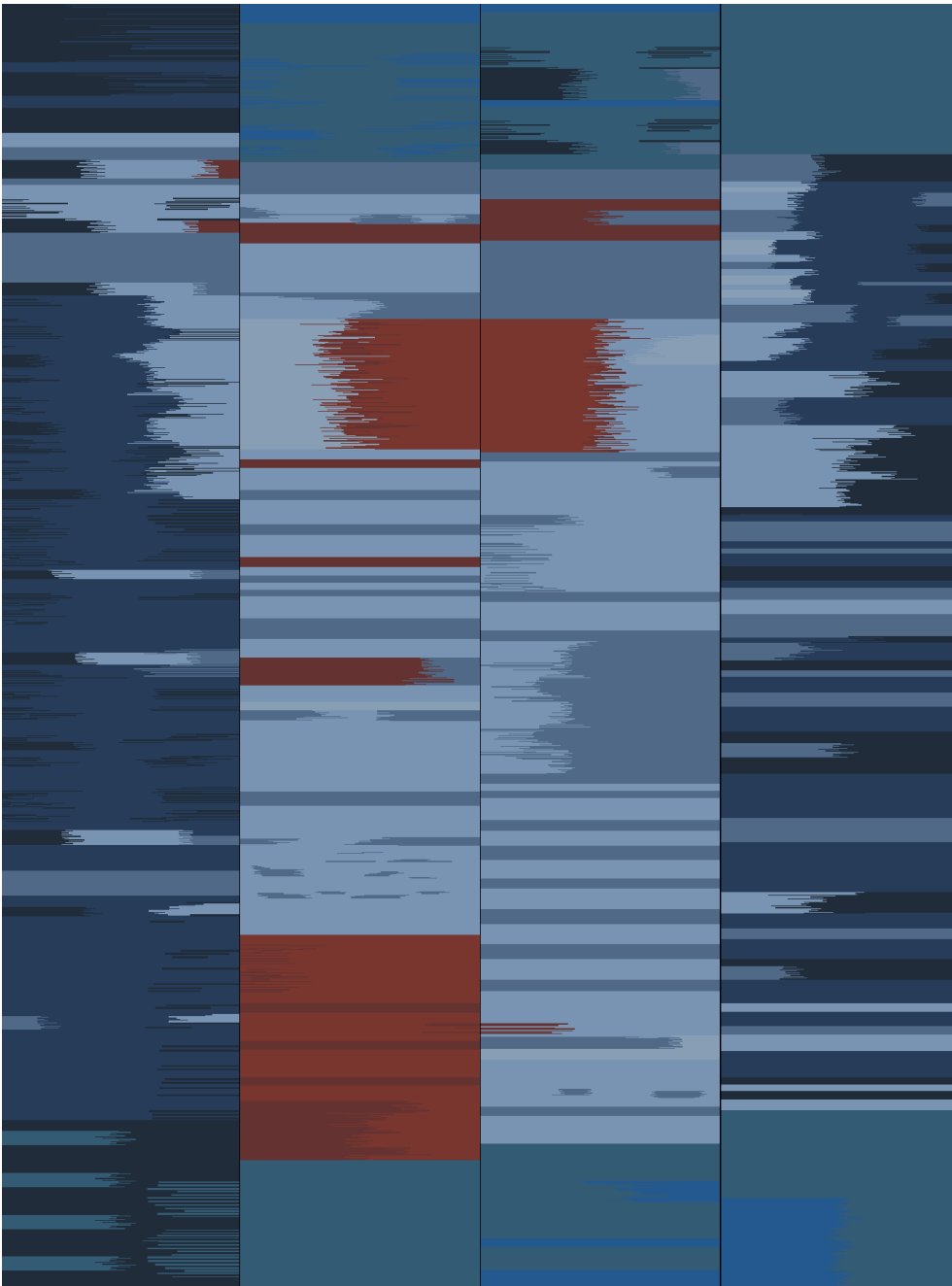
PATTERSON FLYNN

©2025 PATTERSON FLYNN. ALL RIGHTS RESERVED.

COLOR FIELD

094800

COLOR: INDIGO **FIBER:** WOOL **GROUP#** 1188



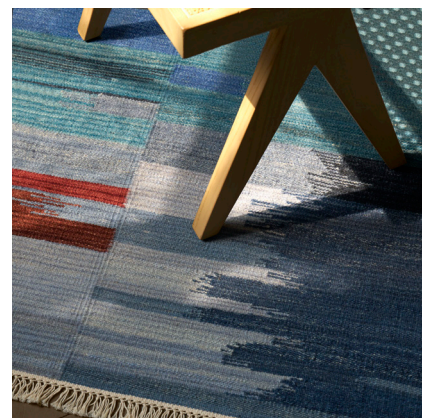
9' X 12' ARTWORK SHOWN



2' X 2' SAMPLE SHOWN



DETAIL SHOWN



DETAIL SHOWN

ABOUT COLOR FIELD:

TAKING ITS CUES FROM JAPANESE DESIGN, COLOR FIELD EVOKES THE ARTISTRY OF HAND WOVEN IKATS AND THE ENDURING SPIRIT OF BORO—THE TIME-HONORED PRACTICE OF PATCHING AND MENDING WITH CARE. WITH ITS PAINTERLY EFFECTS AND COLORS THAT BLUR AND FEATHER INTO EACH OTHER, THIS WOOL FLATWEAVE GIVES THE APPEARANCE OF FOUR PANELS SEWN TOGETHER. CRAFTED FROM HANDSPUN WOOL AND DONE WITH AN ABRASH DYEING TECHNIQUE, THE RUG CELEBRATES SUBTLE IRREGULARITIES AND ARTISTRY OF THE HAND.

PATTERSON FLYNN

©2025 PATTERSON FLYNN. ALL RIGHTS RESERVED.