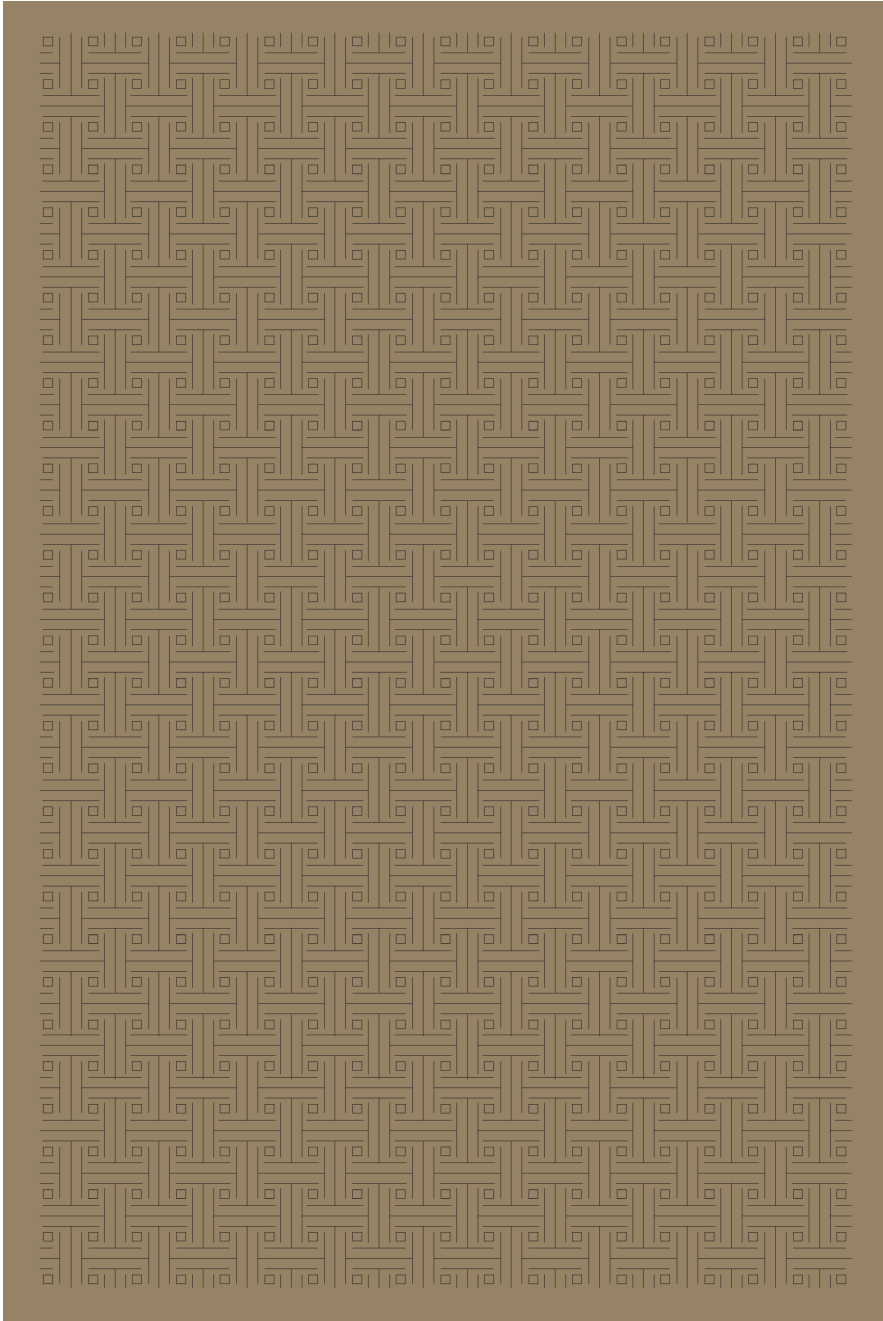


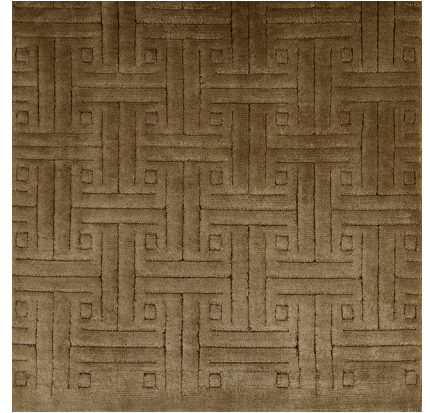
CROSSHATCH

075800

COLOR: BRONZE **FIBER:** SILK & WOOL **GROUP#** 517



ARTWORK FOR 6' X 9' RUG SHOWN



2' X 2' SAMPLE SHOWN



DETAIL SHOWN



DETAIL SHOWN

ABOUT CROSSHATCH:

WITH A SILK PILE AND FINE WOOL LOOP, CROSSHATCH IS SO RICHLY TEXTURED THAT ITS BASKETWEAVE PATTERN APPEARS CARVED INTO THE SURFACE. DISPLAYING THE SUBTLE RIBBING THAT'S A SIGNATURE OF TIBETAN HAND-KNOTTING, IT HAS A PLEASING SCALE THAT SHIFTS EASILY FROM TRADITIONAL TO MODERN, AND FROM LIVING ROOM TO BEDROOM.

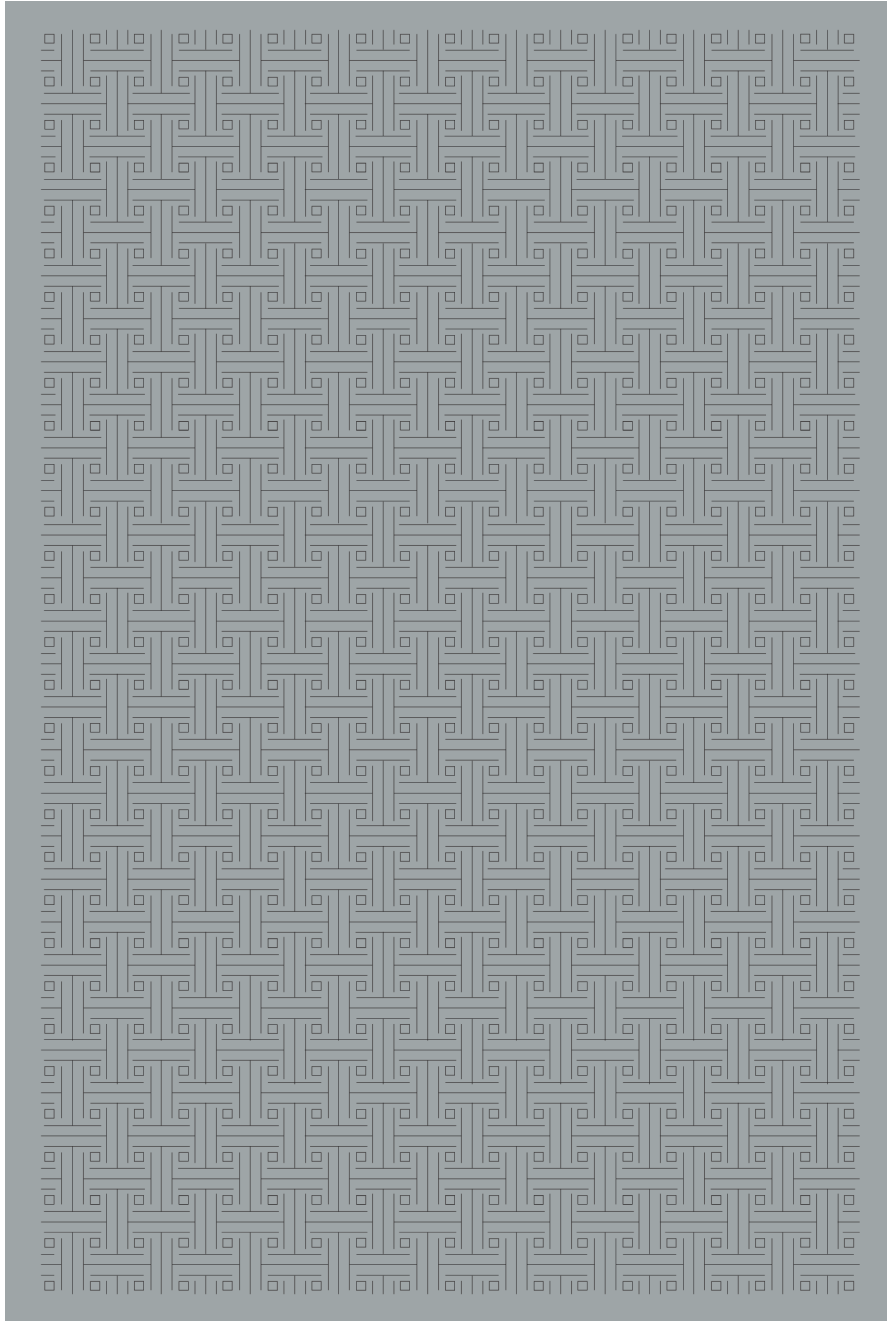
PATTERSON FLYNN

©2023 PATTERSON FLYNN. ALL RIGHTS RESERVED.

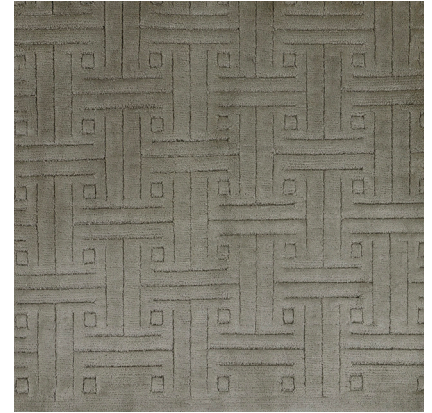
CROSSHATCH

075801

COLOR: STONE GREY **FIBER:** SILK & WOOL **GROUP#** 517



ARTWORK FOR 6' X 9' RUG SHOWN



2' X 2' SAMPLE SHOWN



DETAIL SHOWN



DETAIL SHOWN

ABOUT CROSSHATCH:

WITH A SILK PILE AND FINE WOOL LOOP, CROSSHATCH IS SO RICHLY TEXTURED THAT ITS BASKETWEAVE PATTERN APPEARS CARVED INTO THE SURFACE. DISPLAYING THE SUBTLE RIBBING THAT'S A SIGNATURE OF TIBETAN HAND-KNOTTING, IT HAS A PLEASING SCALE THAT SHIFTS EASILY FROM TRADITIONAL TO MODERN, AND FROM LIVING ROOM TO BEDROOM.

PATTERSON FLYNN

©2023 PATTERSON FLYNN. ALL RIGHTS RESERVED.