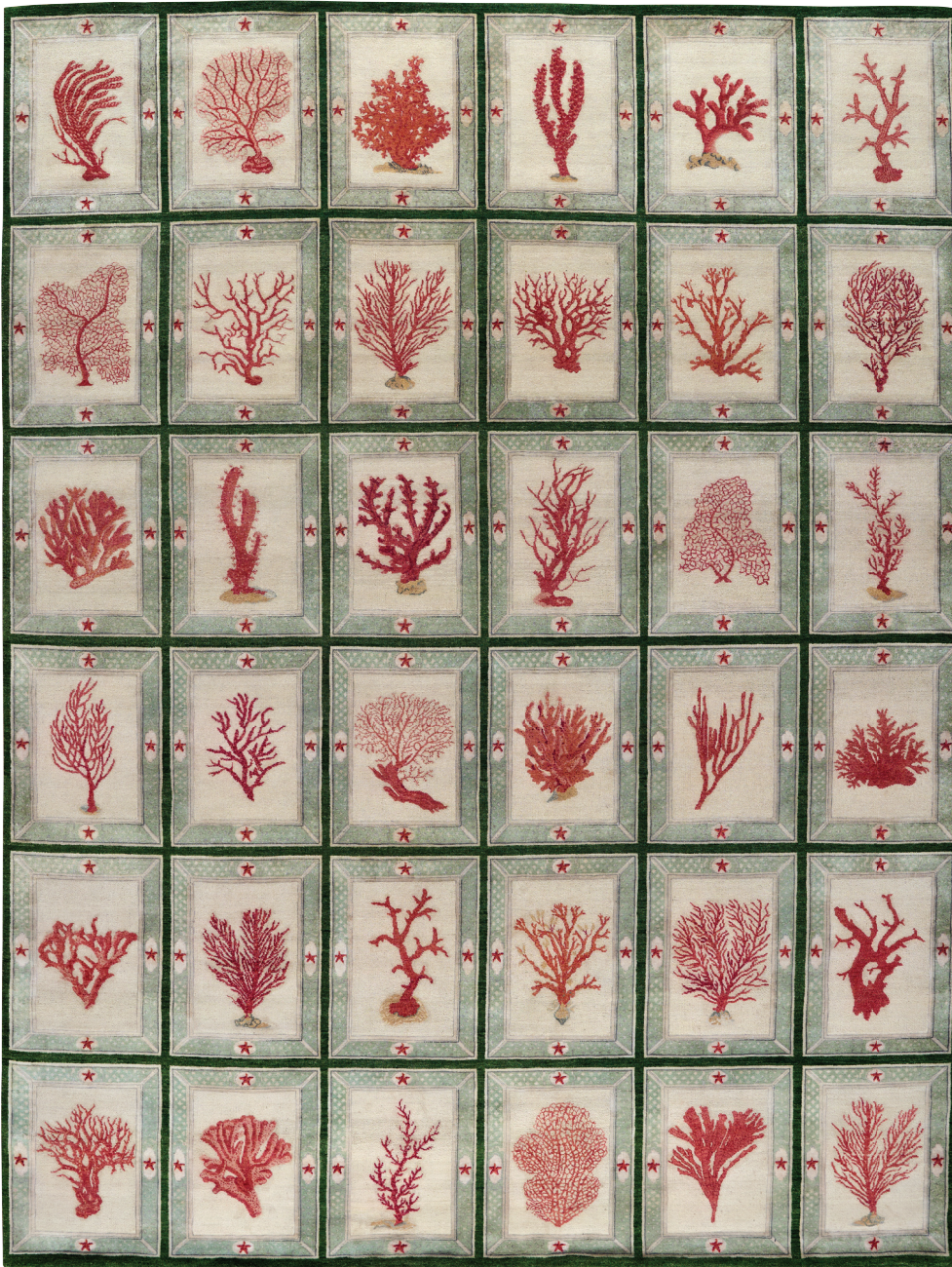


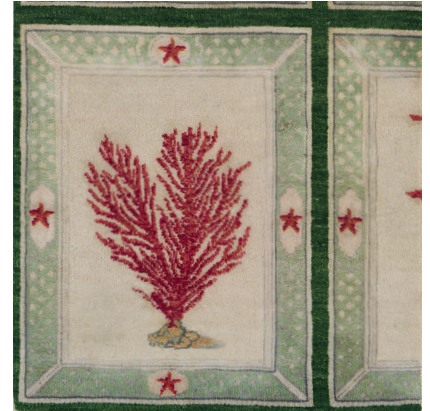
CORAL GABLES

102411

COLOR: PINK FIBER: WOOL & SILK GROUP# 1148



9' X 12' RUG SHOWN



2' X 2' SAMPLE SHOWN



DETAIL SHOWN



DETAIL SHOWN

ABOUT CORAL GABLES:

THE BEAUTY OF OCEAN CORAL IS ELEVATED TO AN ART FORM IN A GRID OF FRAMED SPECIMENS, EACH OF THE 36 EXAMPLES UNIQUE AND UNDUPLICATED. REMINISCENT OF BOTANICAL ILLUSTRATIONS ON A GALLERY WALL, THE CORAL IS DEPICTED ON AN IVORY GROUND. EACH CORAL IS CONTAINED WITHIN A FRAME RENDERED IN SHADES OF BLUE-GREEN AND ACCENTED WITH STARS. PART OF JOHNSON HARTIG'S FIRST COLLECTION WITH PATTERSON FLYNN, THIS PERSIAN HAND-KNOTTED RUG IS CRAFTED IN WOOL WITH FRAMES DONE IN SILK FOR A DELIGHTFUL CONTRAST IN TEXTURE AND SHEEN.

PATTERSON FLYNN

©2026 PATTERSON FLYNN. ALL RIGHTS RESERVED.