

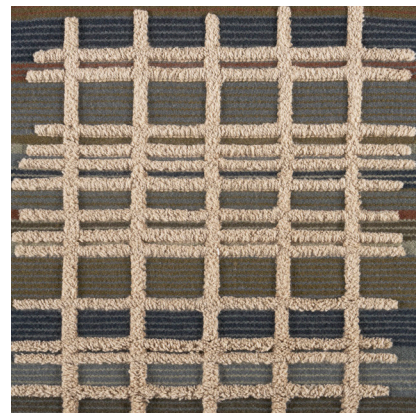
MERIDIAN STRIPE

090581

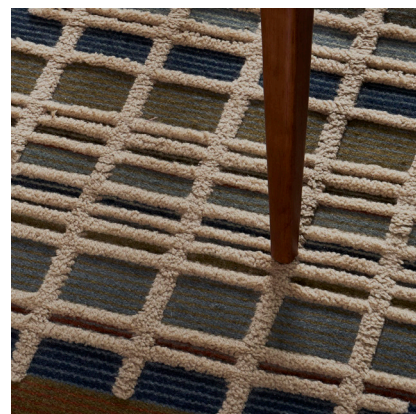
COLOR: AUTUMN FIBER: WOOL GROUP# 517



9' X 12' ARTWORK SHOWN



2' X 2' SAMPLE SHOWN



DETAIL SHOWN



DETAIL SHOWN

ABOUT MERIDIAN STRIPE:

INSPIRED BY ARTIST AGNES MARTIN AND HER PERFECTLY IMPERFECT INK-ON-PAPER WORKS, MERIDIAN STRIPE CELEBRATES THE ART OF THE LINE. A GENEROUSLY SCALED, IRREGULAR GRID PATTERN IS OVERTUFTED ON A MULTICOLOR STRIPED GROUND. THE CUT-PILE GRID IS IN A PALE NEUTRAL, CONTRASTING WITH THE JEWEL-TONED STRIPES OF A DENSE HAND-TUFTED BACKGROUND IN A LOWER PILE. THE 100 PERCENT NEW ZEALAND WOOL RUG IS FINISHED WITH A DECORATIVE FLATWOVEN BORDER WITH BRAIDED TASSELS.

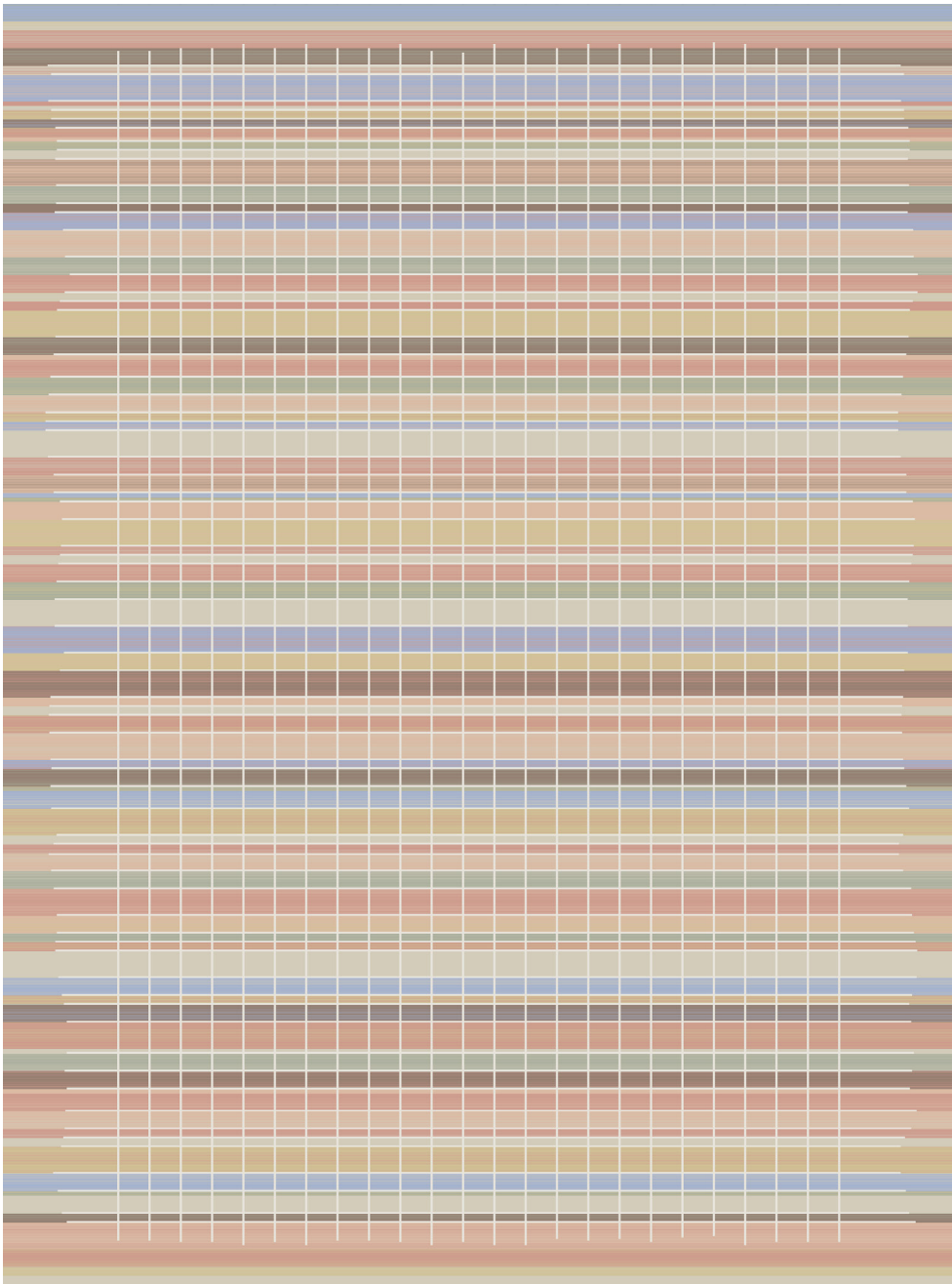
PATTERSON FLYNN

©2026 PATTERSON FLYNN. ALL RIGHTS RESERVED.

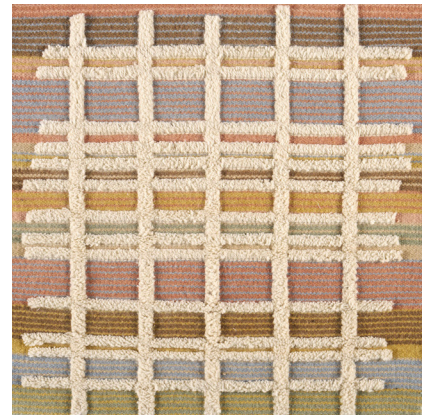
MERIDIAN STRIPE

090582

COLOR: SPRING FIBER: WOOL GROUP# 517



9' X 12' ARTWORK SHOWN



2' X 2' SAMPLE SHOWN



DETAIL SHOWN



DETAIL SHOWN

ABOUT MERIDIAN STRIPE:

INSPIRED BY ARTIST AGNES MARTIN AND HER PERFECTLY IMPERFECT INK-ON-PAPER WORKS, MERIDIAN STRIPE CELEBRATES THE ART OF THE LINE. A GENEROUSLY SCALED, IRREGULAR GRID PATTERN IS OVERTUFTED ON A MULTICOLOR STRIPED GROUND. THE CUT-PILE GRID IS IN A PALE NEUTRAL, CONTRASTING WITH THE DUSTY PASTEL STRIPES OF A DENSE HAND-TUFTED BACKGROUND IN A LOWER PILE. THE 100 PERCENT NEW ZEALAND WOOL RUG IS FINISHED WITH A DECORATIVE FLATWOVEN BORDER WITH BRAIDED TASSELS.

PATTERSON FLYNN

©2026 PATTERSON FLYNN. ALL RIGHTS RESERVED.