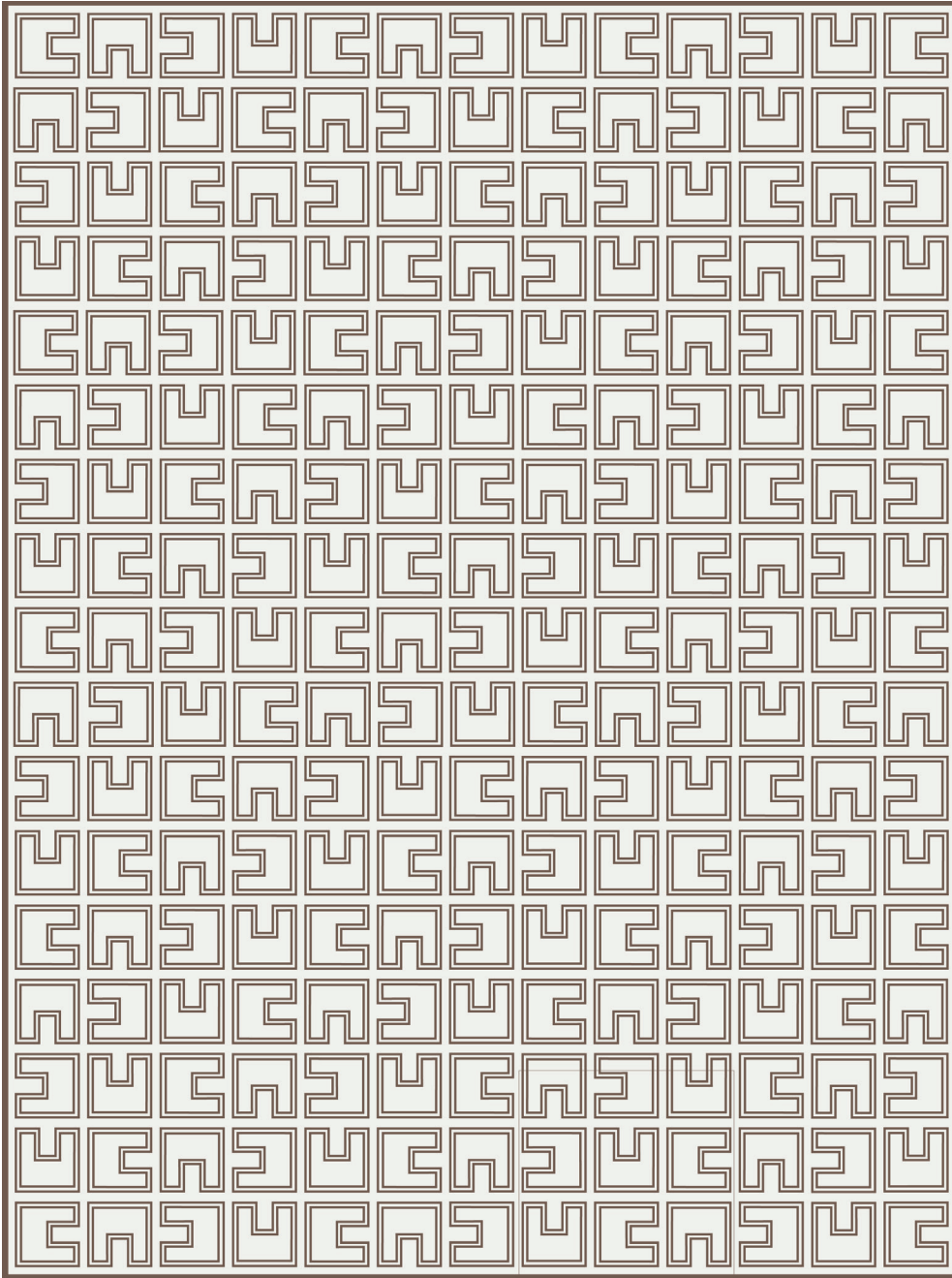


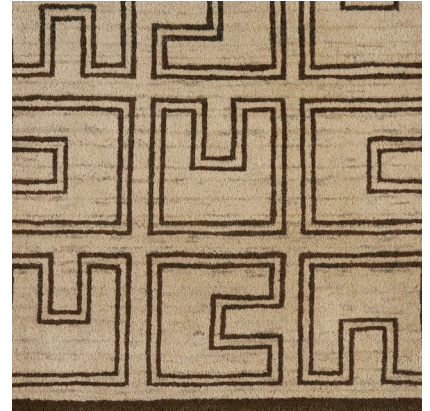
ESKER

075872

COLOR: BROWN **FIBER:** WOOL **GROUP#** 517



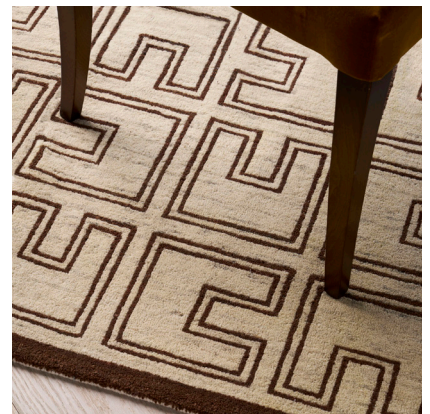
ARTWORK FOR 9' X 12' RUG SHOWN



2' X 2' SAMPLE SHOWN



DETAIL SHOWN



DETAIL SHOWN

ABOUT ESKER:

THIS REINTERPRETATION OF A 1970S PATTERN TURNS THE GREEK KEY INTO SOMETHING BOTH PRIMITIVE AND DISTINCTLY MODERN. THE DYED AND UNDYED HANDSPUN WOOL FROM NEW ZEALAND AND AFGHANISTAN IS PLUSH AND EXTRA DENSE, CREATING HAND-KNOTTED TEXTURE WITH A HIGH PILE.

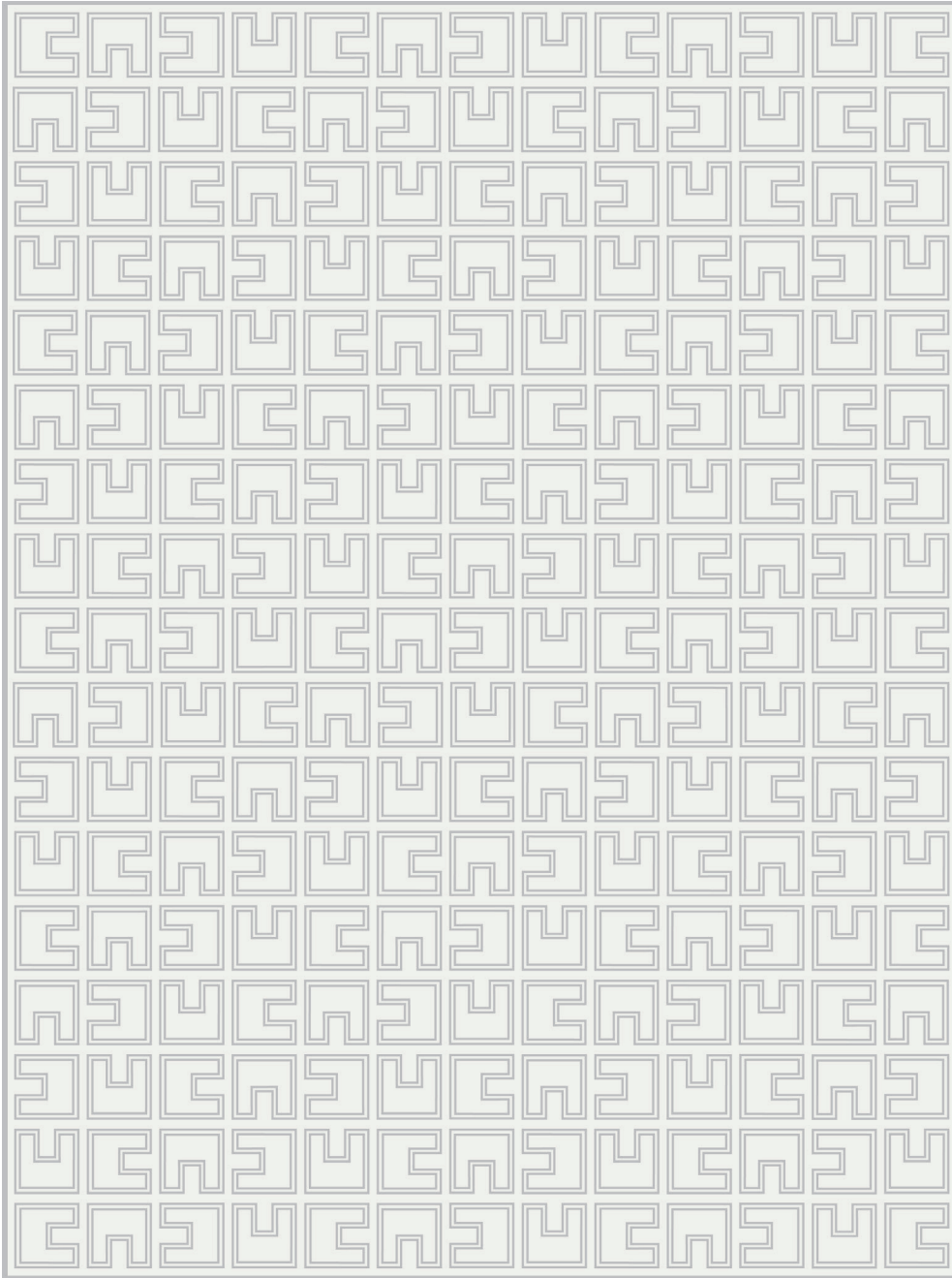
PATTERSON FLYNN

©2023 PATTERSON FLYNN. ALL RIGHTS RESERVED.

ESKER

075873

COLOR: GREY **FIBER:** WOOL **GROUP#** 517



ARTWORK FOR 9' X 12' RUG SHOWN



2' X 2' SAMPLE SHOWN



DETAIL SHOWN



DETAIL SHOWN

ABOUT ESKER:

THIS REINTERPRETATION OF A 1970S PATTERN TURNS THE GREEK KEY INTO SOMETHING BOTH PRIMITIVE AND DISTINCTLY MODERN. THE DYED AND UNDYED HANDSPUN WOOL FROM NEW ZEALAND AND AFGHANISTAN IS PLUSH AND EXTRA DENSE, CREATING HAND-KNOTTED TEXTURE WITH A HIGH PILE.

PATTERSON FLYNN

©2023 PATTERSON FLYNN. ALL RIGHTS RESERVED.