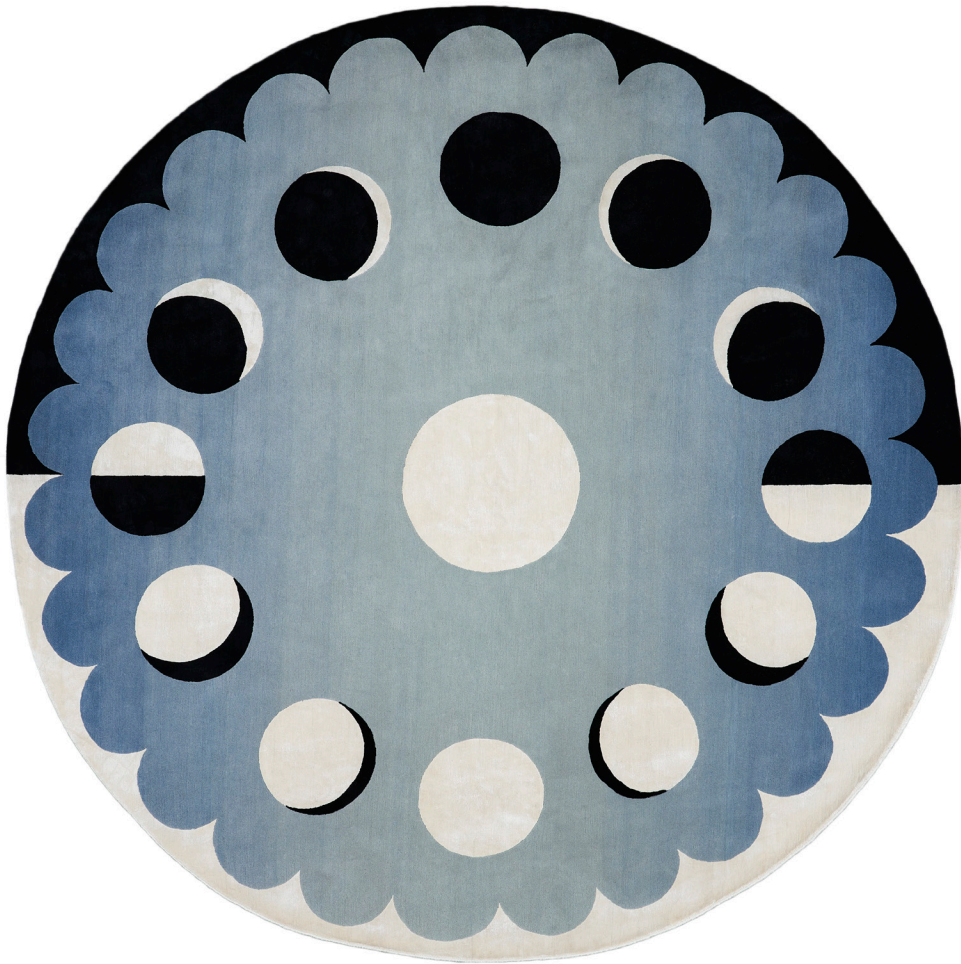


**GRACE**

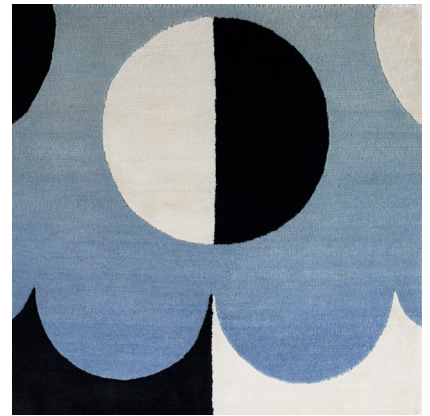
040135

**COLOR:** BLUE **FIBER:** WOOL & SILK **GROUP#** 1062

---



ACTUAL 9' ROUND RUG SHOWN



2' X 2' SAMPLE SHOWN



DETAIL SHOWN



DETAIL SHOWN

**ABOUT GRACE:**

THE PHASES OF THE MOON CIRCLE AROUND GRACE, A HAND-KNOTTED WOOL AND SILK RUG DESIGNED BY CHARLAP HYMAN & HERRERO. AT ONCE ABSTRACT AND LITERAL, SUBTLE AND SUPER SATURATED, THE GRAPHIC SILK MOONS ARE A SURREAL, SOPHISTICATED PLAY ON ASTROLOGICAL CHARTS.

PATTERSON FLYNN

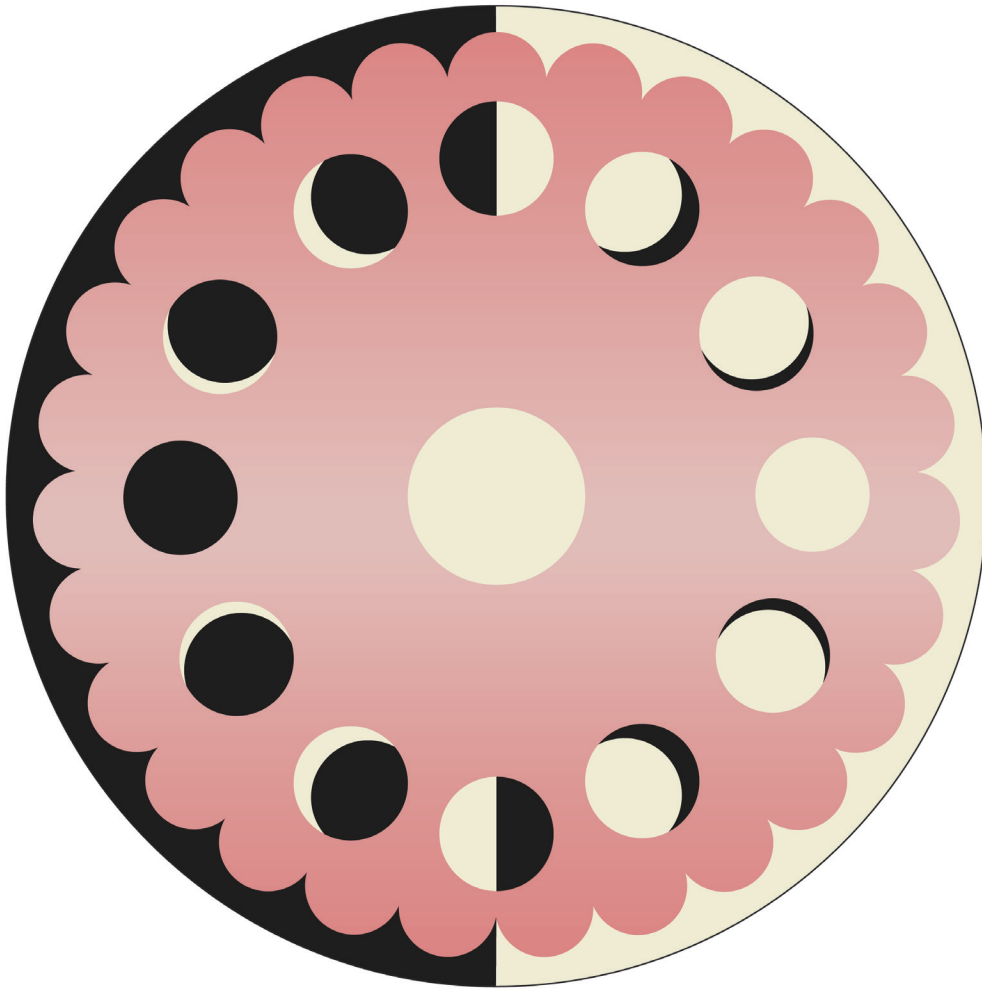
©2023 PATTERSON FLYNN. ALL RIGHTS RESERVED.

## GRACE

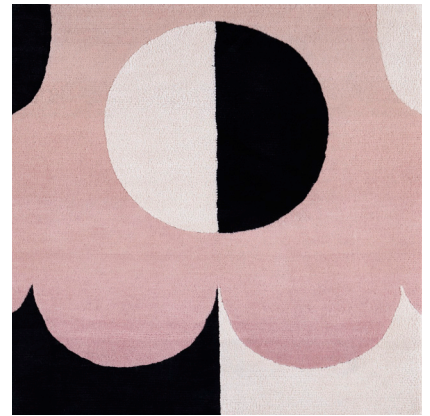
040133

**COLOR:** BLUSH **FIBER:** WOOL & SILK **GROUP#** 1062

---



ARTWORK FOR 9' ROUND RUG SHOWN



2' X 2' SAMPLE SHOWN



DETAIL SHOWN



DETAIL SHOWN

### ABOUT GRACE:

THE PHASES OF THE MOON CIRCLE AROUND GRACE, A HAND-KNOTTED WOOL AND SILK RUG DESIGNED BY CHARLAP HYMAN & HERRERO. AT ONCE ABSTRACT AND LITERAL, SUBTLE AND SUPER SATURATED, THE GRAPHIC SILK MOONS ARE A SURREAL, SOPHISTICATED PLAY ON ASTROLOGICAL CHARTS.

# PATTERSON FLYNN

©2023 PATTERSON FLYNN. ALL RIGHTS RESERVED.

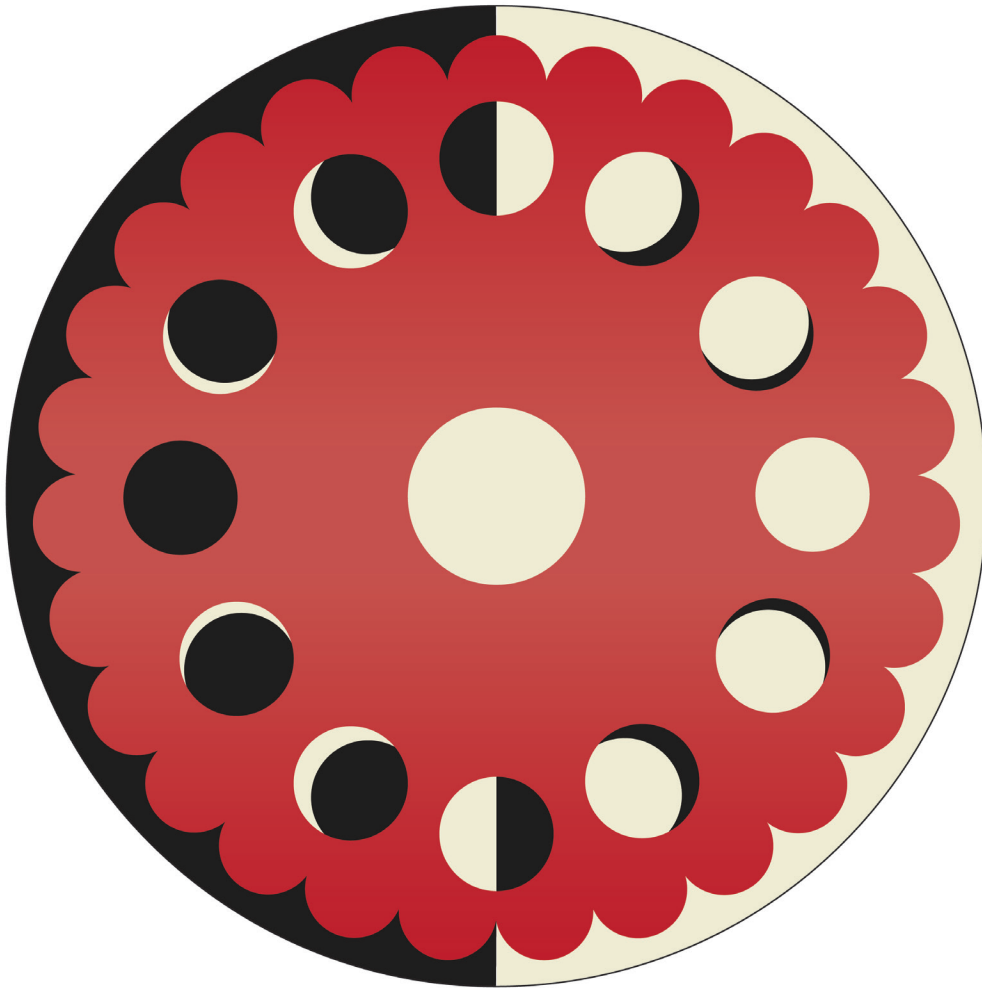


## GRACE

040134

**COLOR:** RED **FIBER:** WOOL & SILK **GROUP#** 1062

---



ARTWORK FOR 9' ROUND RUG SHOWN



2' X 2' SAMPLE SHOWN



DETAIL SHOWN



DETAIL SHOWN

### ABOUT GRACE:

THE PHASES OF THE MOON CIRCLE AROUND GRACE, A HAND-KNOTTED WOOL AND SILK RUG DESIGNED BY CHARLAP HYMAN & HERRERO. AT ONCE ABSTRACT AND LITERAL, SUBTLE AND SUPER SATURATED, THE GRAPHIC SILK MOONS ARE A SURREAL, SOPHISTICATED PLAY ON ASTROLOGICAL CHARTS.

# PATTERSON FLYNN

©2023 PATTERSON FLYNN. ALL RIGHTS RESERVED.