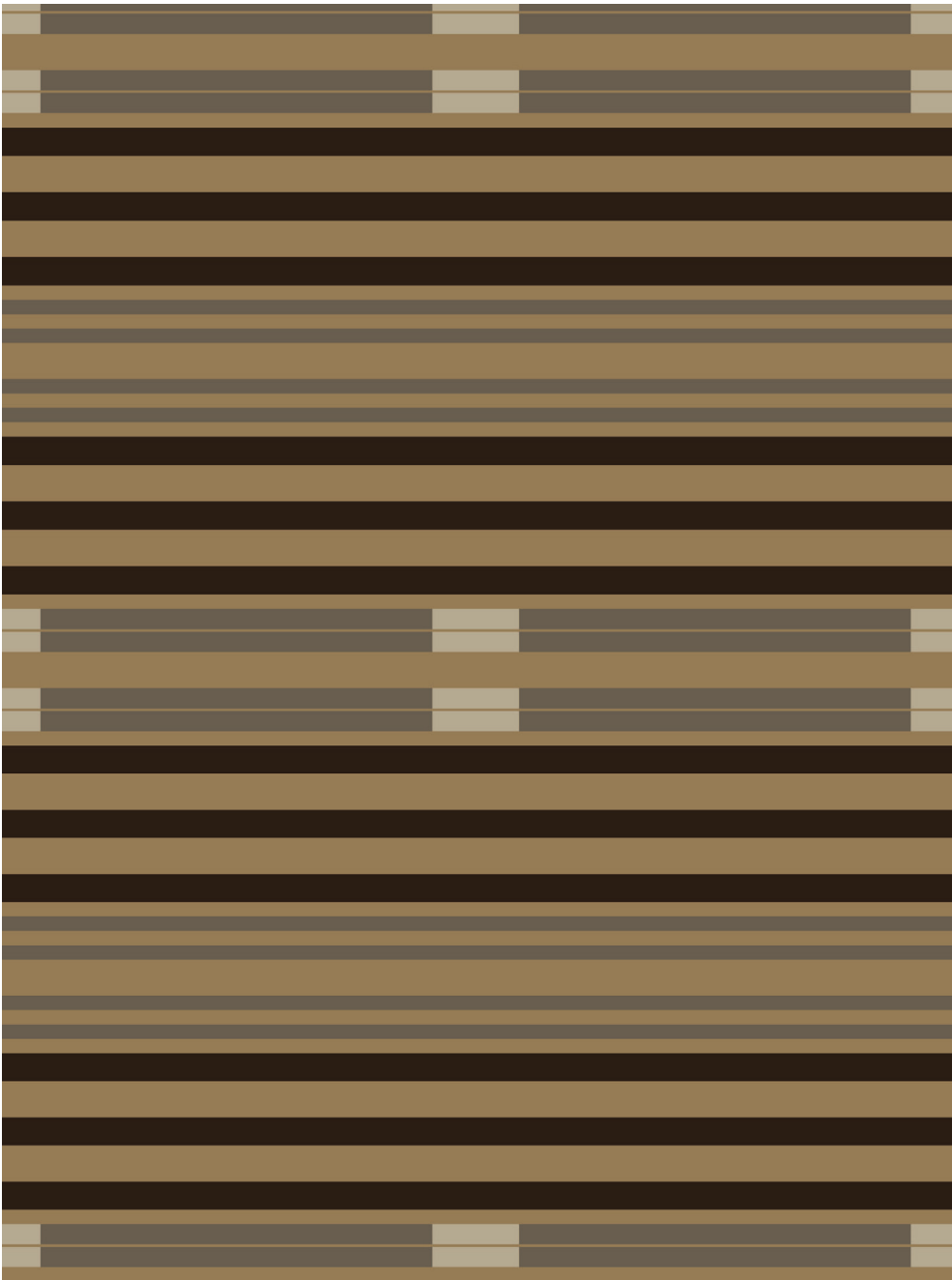


GAUCHO

099291

COLOR: SEPIA MULTI **FIBER:** WOOL, LINEN, JUTE & METALLIC **GROUP#** 1188



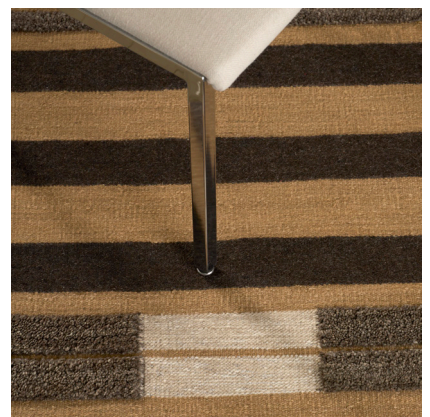
9' X 12' ARTWORK SHOWN



2' X 2' SAMPLE SHOWN



DETAIL SHOWN



DETAIL SHOWN

ABOUT GAUCHO:

THERE ARE STRIPES, AND THEN THERE ARE GAUCHO'S STRIPES. ELEVATED AND UNIQUE WITH A BAUHAUS BENT, THESE STRIPES HAVE AN UNUSUAL MIX OF TEXTURES AND MATERIALS. PART OF DESIGNER ALFREDO PAREDES' FIRST COLLECTION FOR PATTERSON FLYNN, THE RUG GETS ITS RHYTHM FROM THE HUMBLE/ELEVATED INTERPLAY OF UNDYED WOOL, CUT PILE, BLENDED JUTE AND LINEN, AND SILVER METALLIC ACCENTS.

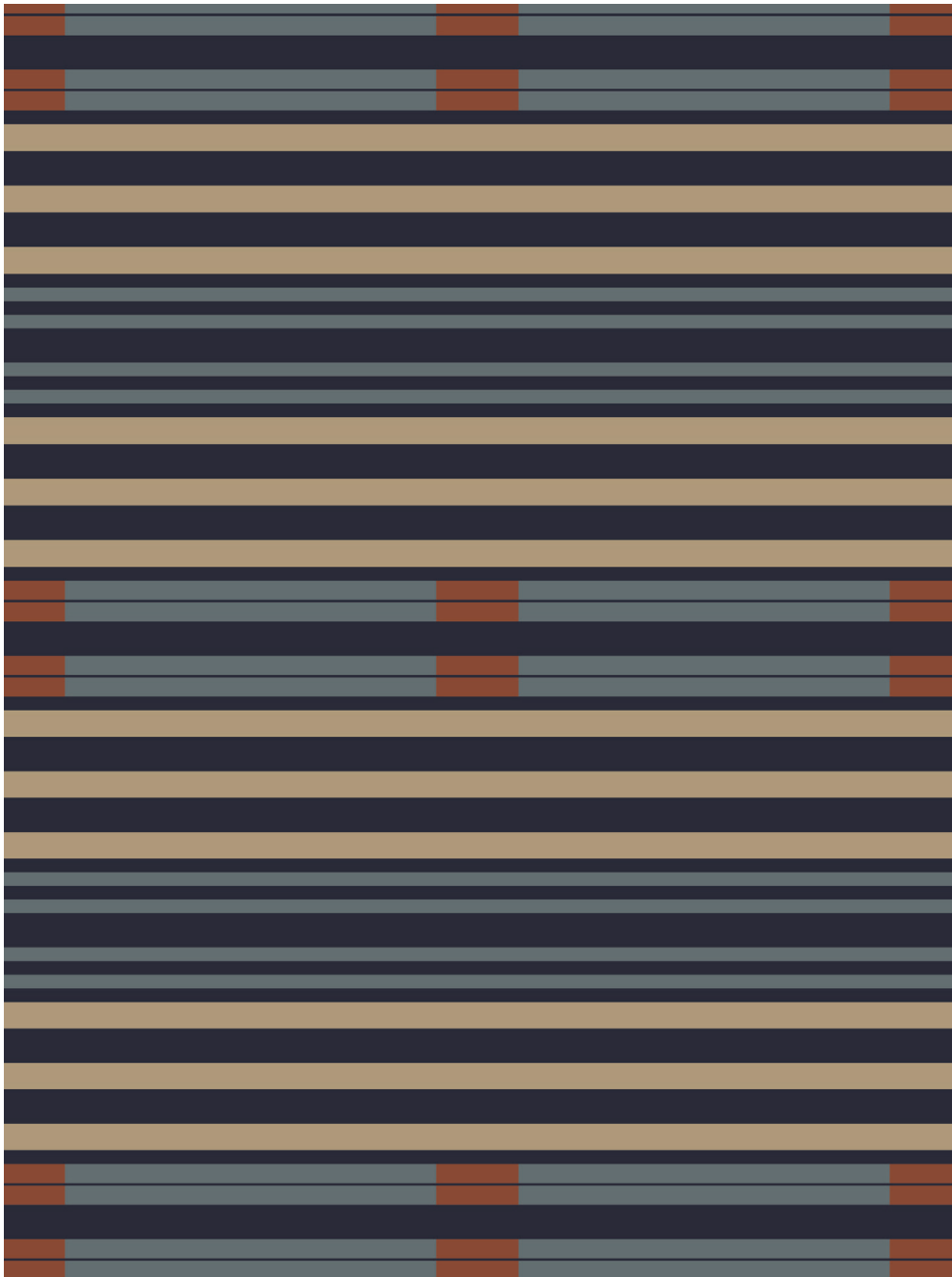
PATTERSON FLYNN

©2025 PATTERSON FLYNN. ALL RIGHTS RESERVED.

GAUCHO

099293

COLOR: BLUE MULTI **FIBER:** WOOL **GROUP#** 1188



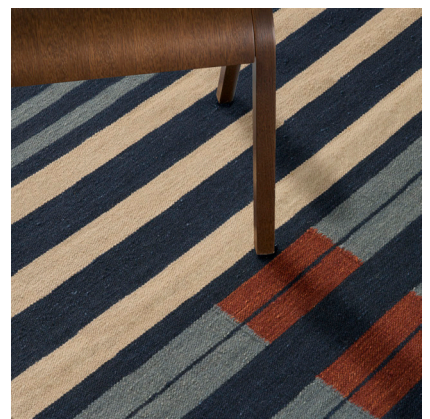
9' X 12' ARTWORK SHOWN



2' X 2' SAMPLE SHOWN



DETAIL SHOWN



DETAIL SHOWN

ABOUT GAUCHO:

THERE ARE STRIPES, AND THEN THERE ARE GAUCHO'S STRIPES. ELEVATED AND UNIQUE WITH A BAUHAUS BENT, THESE STRIPES HAVE AN UNUSUAL RHYTHM THAT PLAYS WITH COLOR BLOCKING. PART OF DESIGNER ALFREDO PAREDES' FIRST COLLECTION FOR PATTERSON FLYNN, THIS WOOL FLATWEAVE IS MADE WITH A THICK-AND-THIN HANDSPUN YARN WITH AN ABRASH EFFECT THAT ADDS DEPTH AND TEXTURAL INTEREST TO THE DESIGN.

PATTERSON FLYNN

©2025 PATTERSON FLYNN. ALL RIGHTS RESERVED.

GAUCHO

100657

COLOR: OXBLOOD MULTI **FIBER:** WOOL **GRUP#** 1188



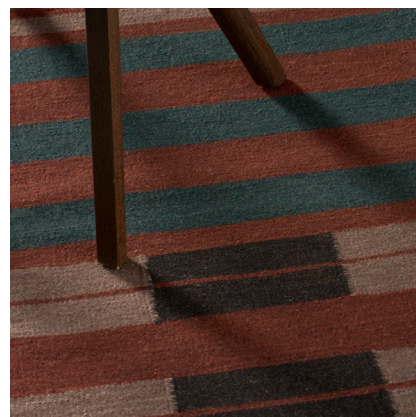
9' X 12' RUG SHOWN



2' X 2' SAMPLE SHOWN



DETAIL SHOWN



DETAIL SHOWN

ABOUT GAUCHO:

THERE ARE STRIPES, AND THEN THERE ARE GAUCHO'S STRIPES. ELEVATED AND UNIQUE WITH A BAUHAUS BENT, THESE STRIPES HAVE AN UNUSUAL RHYTHM THAT PLAYS WITH COLOR BLOCKING. PART OF DESIGNER ALFREDO PAREDES' FIRST COLLECTION FOR PATTERSON FLYNN, THIS WOOL FLATWEAVE IS MADE WITH A THICK-AND-THIN HANDSPUN YARN WITH AN ABRASH EFFECT THAT ADDS DEPTH AND TEXTURAL INTEREST TO THE DESIGN.

PATTERSON FLYNN

©2025 PATTERSON FLYNN. ALL RIGHTS RESERVED.