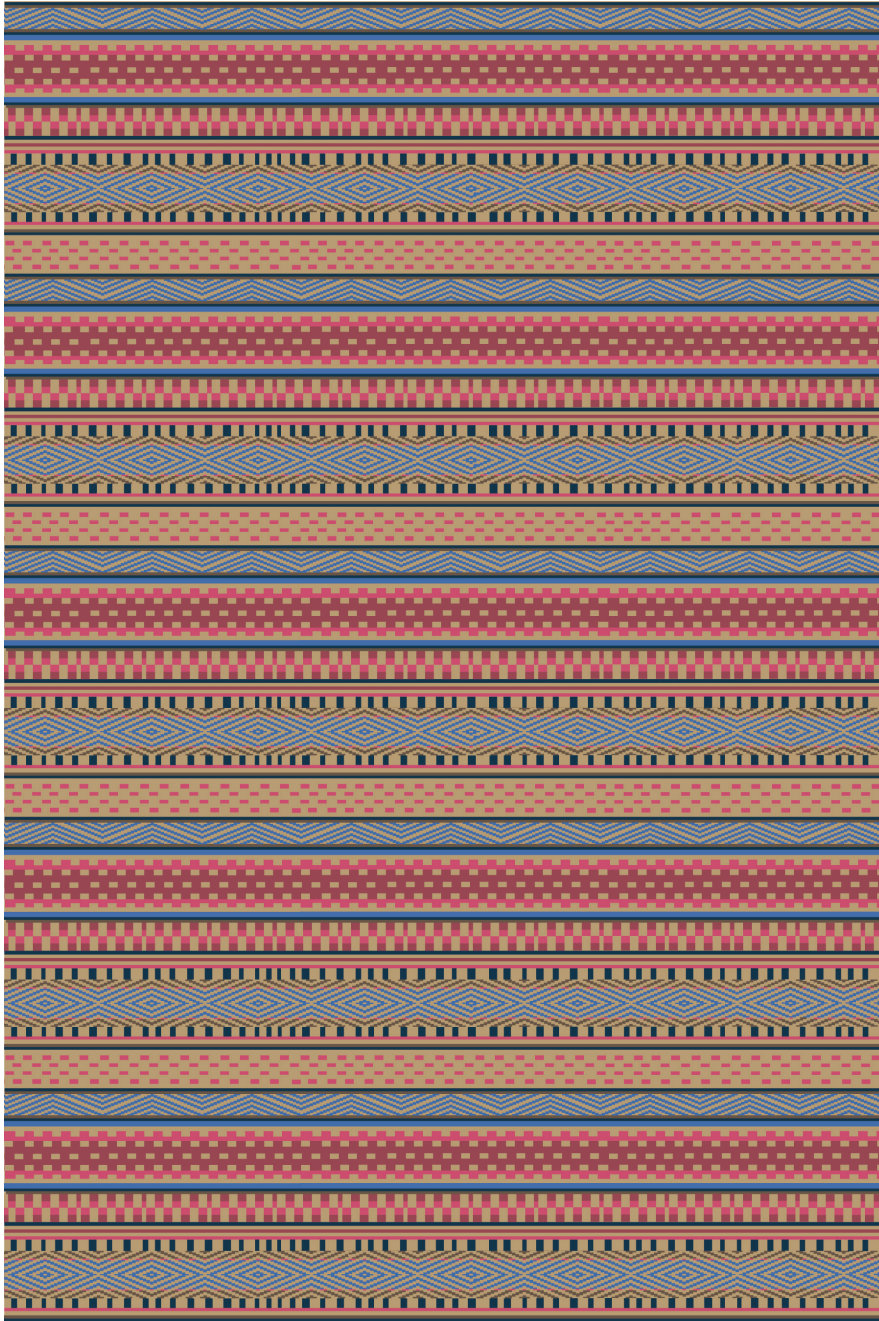


JOURNEY

057950

COLOR: MADDER **FIBER:** ABACA **GROUP#** 900



ARTWORK FOR 6' X 9' RUG SHOWN



2' X 2' SAMPLE SHOWN



DETAIL SHOWN

ABOUT JOURNEY:

REFINED IN BOTH DESIGN AND TEXTURE, THIS ABACA FLATWEAVE HAS A THIN PROFILE AND A TIGHT TEXTURE REMINISCENT OF JAPANESE TATAMI MATS, WHILE THE PATTERNED STRIPES COMMUNICATE AN INTRICATE, HANDMADE FEEL.

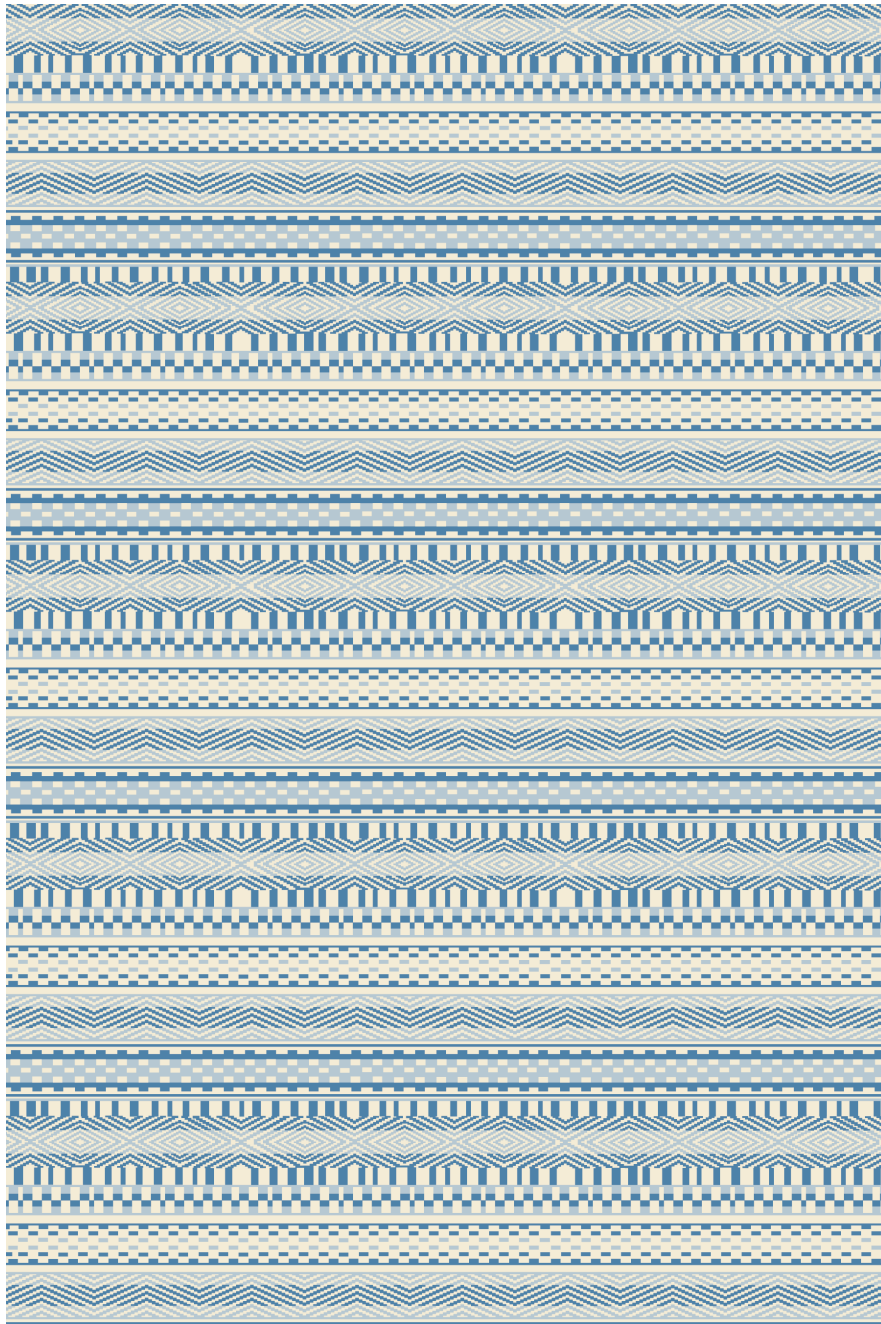
PATTERSON FLYNN

©2023 PATTERSON FLYNN. ALL RIGHTS RESERVED.

JOURNEY

057948

COLOR: SEASIDE **FIBER:** ABACA **GROUP#** 900



ARTWORK FOR 6' X 9' RUG SHOWN



2' X 2' SAMPLE SHOWN



DETAIL SHOWN

ABOUT JOURNEY:

REFINED IN BOTH DESIGN AND TEXTURE, THIS ABACA FLATWEAVE HAS A THIN PROFILE AND A TIGHT TEXTURE REMINISCENT OF JAPANESE TATAMI MATS, WHILE THE PATTERNED STRIPES COMMUNICATE AN INTRICATE, HANDMADE FEEL.

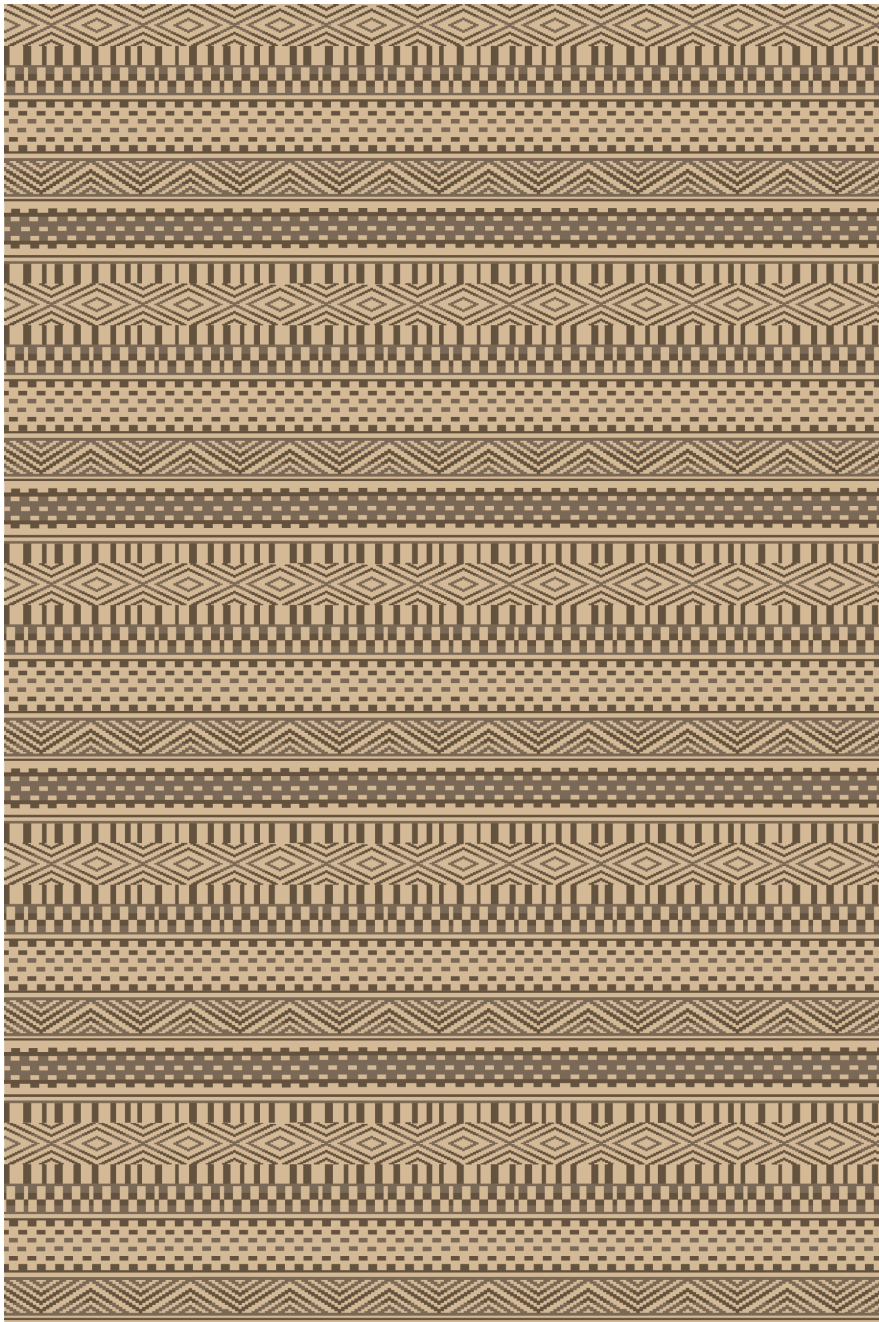
PATTERSON FLYNN

©2023 PATTERSON FLYNN. ALL RIGHTS RESERVED.

JOURNEY

057949

COLOR: WALNUT **FIBER:** ABACA **GROUP#** 900



ARTWORK FOR 6' X 9' RUG SHOWN



2' X 2' SAMPLE SHOWN



DETAIL SHOWN

ABOUT JOURNEY:

REFINED IN BOTH DESIGN AND TEXTURE, THIS ABACA FLATWEAVE HAS A THIN PROFILE AND A TIGHT TEXTURE REMINISCENT OF JAPANESE TATAMI MATS, WHILE THE PATTERNED STRIPES COMMUNICATE AN INTRICATE, HANDMADE FEEL.

PATTERSON FLYNN

©2023 PATTERSON FLYNN. ALL RIGHTS RESERVED.