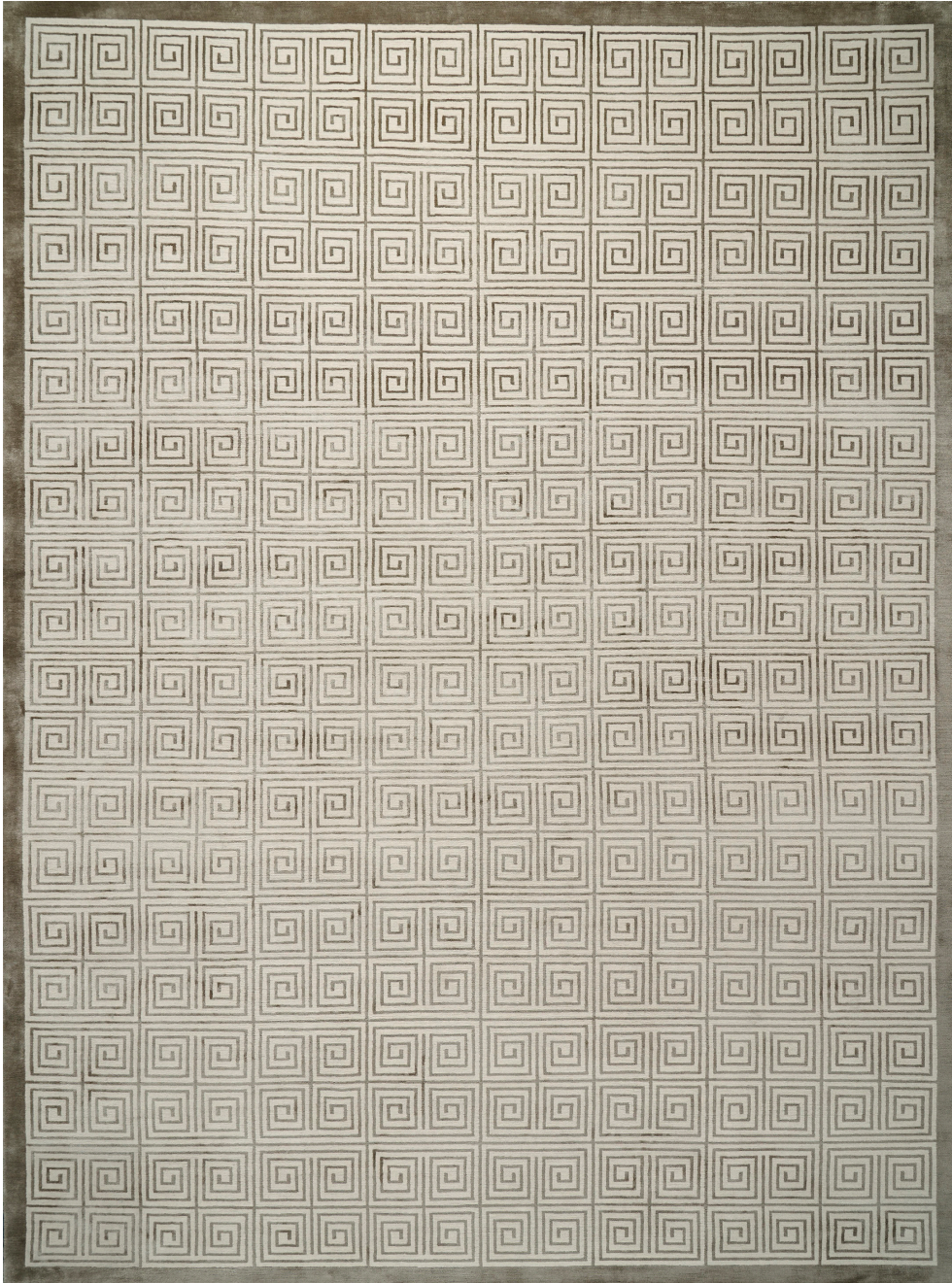


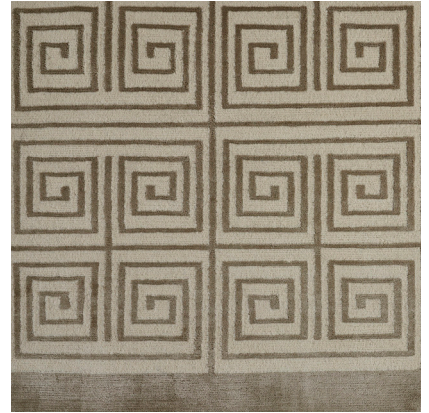
**JURGEN**

075828

**COLOR:** PEWTER **FIBER:** SILK & WOOL **GROUP#** 517



9' X 12' RUG SHOWN



2' X 2' SAMPLE SHOWN



DETAIL SHOWN



DETAIL SHOWN

**ABOUT JURGEN:**

JURGEN'S TIGHTLY COILED GREEK KEY MOTIF HAS AN UNDENIABLY GLAM HOLLYWOOD REGENCY SENSIBILITY THAT'S LIGHTENED UP WITH MODERN COLORS. THE HAND-KNOTTED TIBETAN WOOL AND SILK IS DONE IN A SCALE THAT'S SUPREMELY USABLE AND UNIVERSALLY APPEALING.

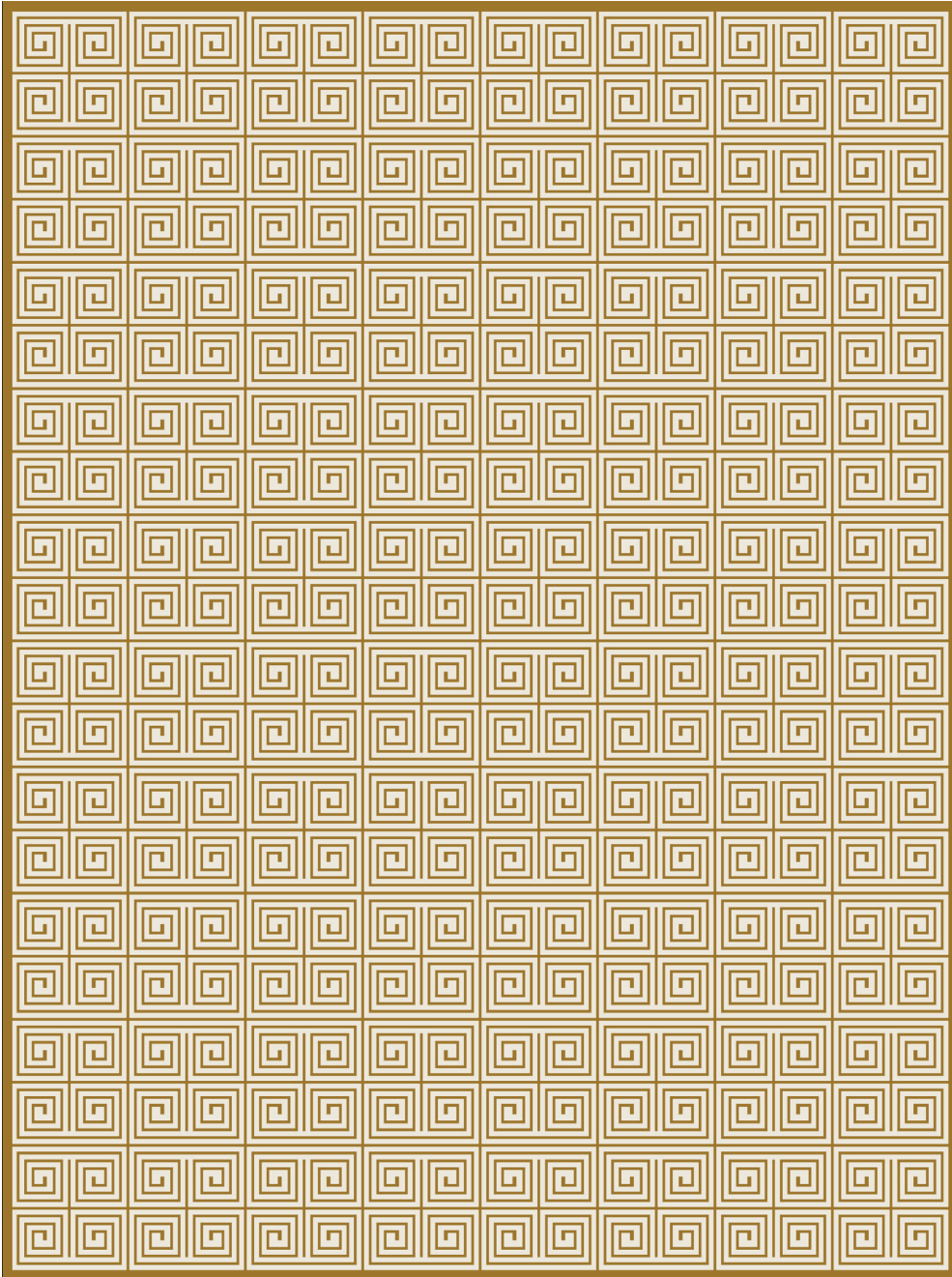
**PATTERSON FLYNN**

©2023 PATTERSON FLYNN. ALL RIGHTS RESERVED.

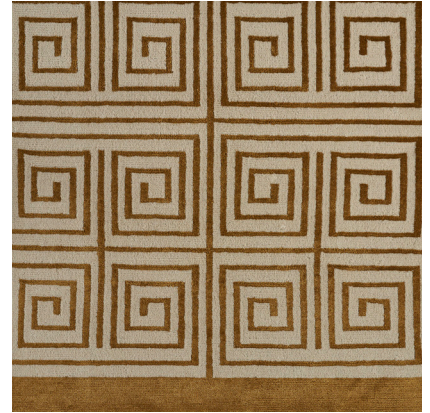
**JURGEN**

075829

**COLOR:** GOLDEN BROWN **FIBER:** SILK & WOOL **GROUP#** 517



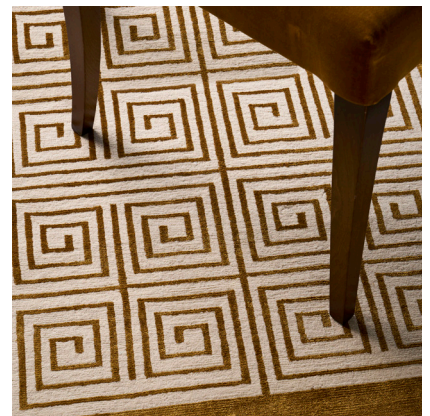
ARTWORK FOR 9' X 12' RUG SHOWN



2' X 2' SAMPLE SHOWN



DETAIL SHOWN



DETAIL SHOWN

**ABOUT JURGEN:**

JURGEN'S TIGHTLY COILED GREEK KEY MOTIF HAS AN UNDENIABLY GLAM HOLLYWOOD REGENCY SENSIBILITY THAT'S LIGHTENED UP WITH MODERN COLORS. THE HAND-KNOTTED TIBETAN WOOL AND SILK IS DONE IN A SCALE THAT'S SUPREMELY USABLE AND UNIVERSALLY APPEALING.

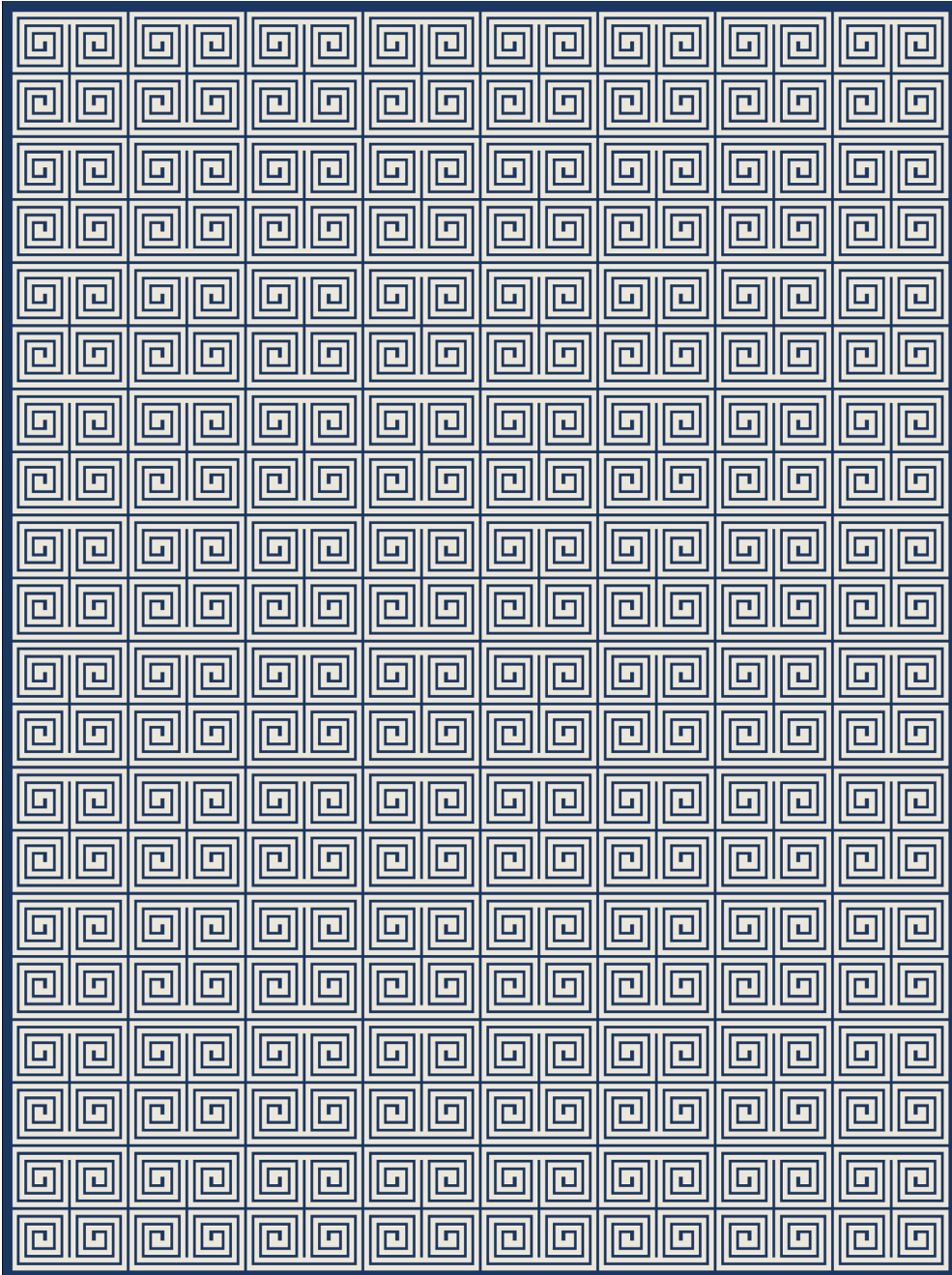
**PATTERSON FLYNN**

©2023 PATTERSON FLYNN. ALL RIGHTS RESERVED.

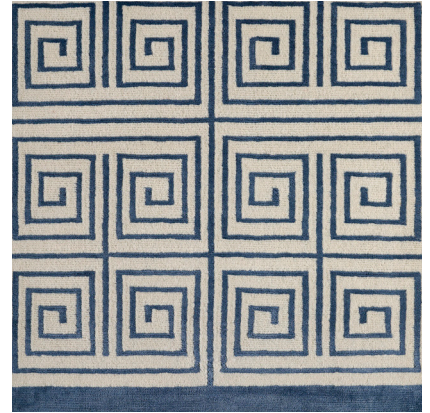
**JURGEN**

075830

**COLOR:** NAVY **FIBER:** SILK & WOOL **GROUP#** 517



ARTWORK FOR 9' X 12' RUG SHOWN



2' X 2' SAMPLE SHOWN



DETAIL SHOWN



DETAIL SHOWN

**ABOUT JURGEN:**

JURGEN'S TIGHTLY COILED GREEK KEY MOTIF HAS AN UNDENIABLY GLAM HOLLYWOOD REGENCY SENSIBILITY THAT'S LIGHTENED UP WITH MODERN COLORS. THE HAND-KNOTTED TIBETAN WOOL AND SILK IS DONE IN A SCALE THAT'S SUPREMELY USABLE AND UNIVERSALLY APPEALING.

**PATTERSON FLYNN**

©2023 PATTERSON FLYNN. ALL RIGHTS RESERVED.