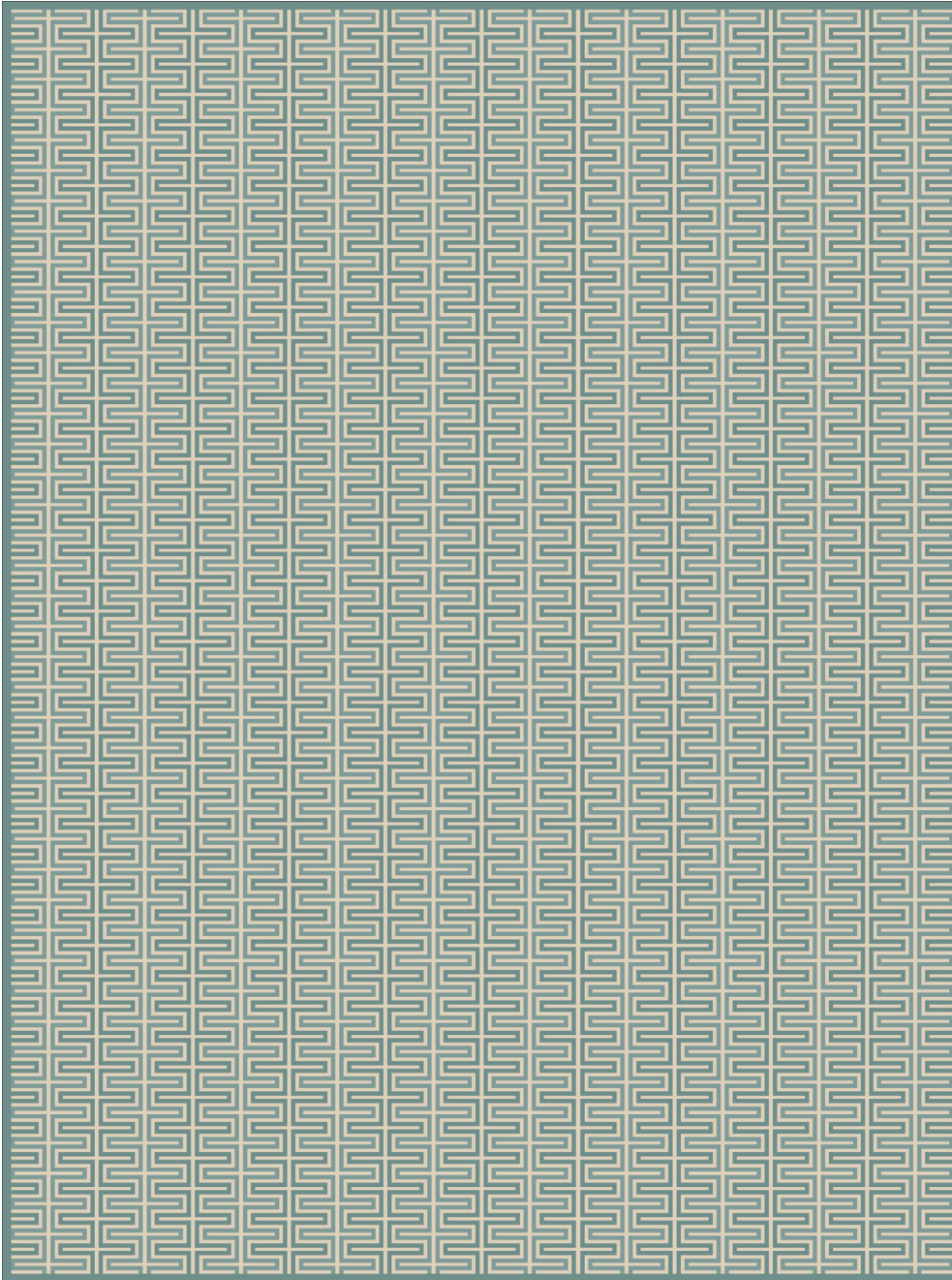


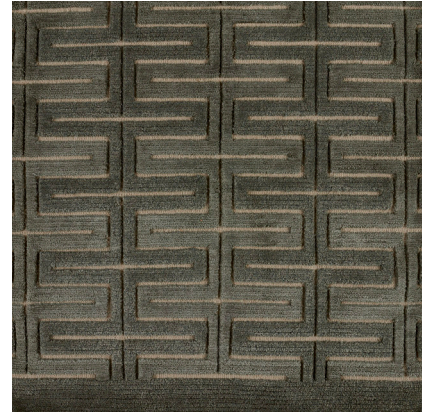
**KOLDING**

077201

**COLOR:** VERDANT **FIBER:** SILK & WOOL **GROUP#** 517



ARTWORK FOR 9' X 12' RUG SHOWN



2' X 2' SAMPLE SHOWN



DETAIL SHOWN



DETAIL SHOWN

**ABOUT KOLDING:**

INTERLOCKING AND TOTEM-LIKE, THE GEOMETRIC REPEAT OF KOLDING IS A CLASSIC THAT SHIFTS ELEGANTLY FROM STRIPES TO BARS TO BLOCKS. THE PATTERN IS MADE EVEN RICHER BY THE HIGHLY TEXTURAL, SLIGHTLY RUSTIC QUALITY OF TIBETAN HAND-KNOTTED SILK CUT PILE WITH A WOOL GROUND.

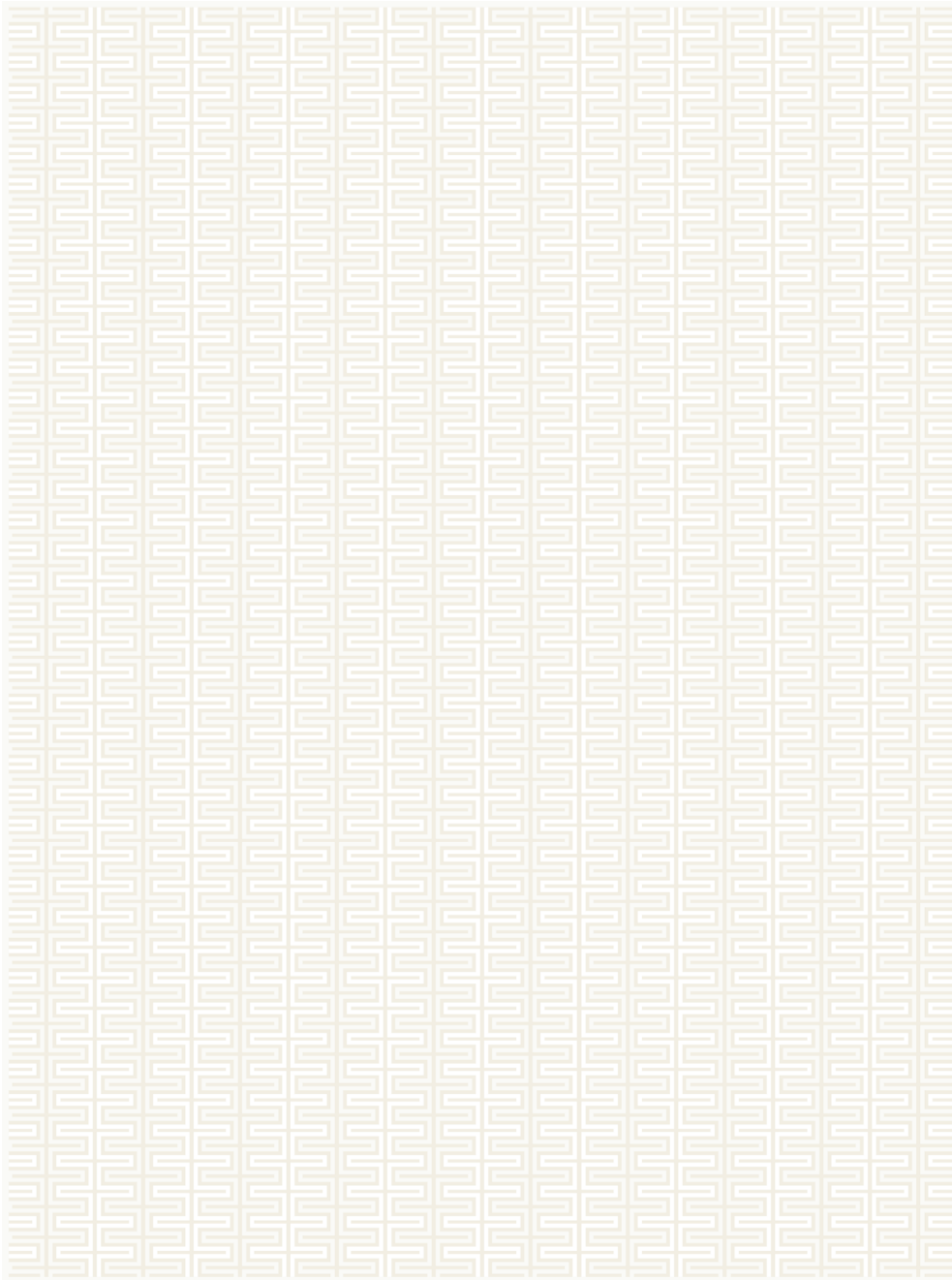
PATTERSON FLYNN

©2023 PATTERSON FLYNN. ALL RIGHTS RESERVED.

**KOLDING**

77198

**COLOR:** BONE **FIBER:** SILK & WOOL **GROUP#** 517



ARTWORK FOR 9' X 12' RUG SHOWN



2' X 2' SAMPLE SHOWN



DETAIL SHOWN



DETAIL SHOWN

**ABOUT KOLDING:**

INTERLOCKING AND TOTEM-LIKE, THE GEOMETRIC REPEAT OF KOLDING IS A CLASSIC THAT SHIFTS ELEGANTLY FROM STRIPES TO BARS TO BLOCKS. THE PATTERN IS MADE EVEN RICHER BY THE HIGHLY TEXTURAL, SLIGHTLY RUSTIC QUALITY OF TIBETAN HAND-KNOTTED SILK CUT PILE WITH A WOOL GROUND.

**PATTERSON FLYNN**

©2023 PATTERSON FLYNN. ALL RIGHTS RESERVED.