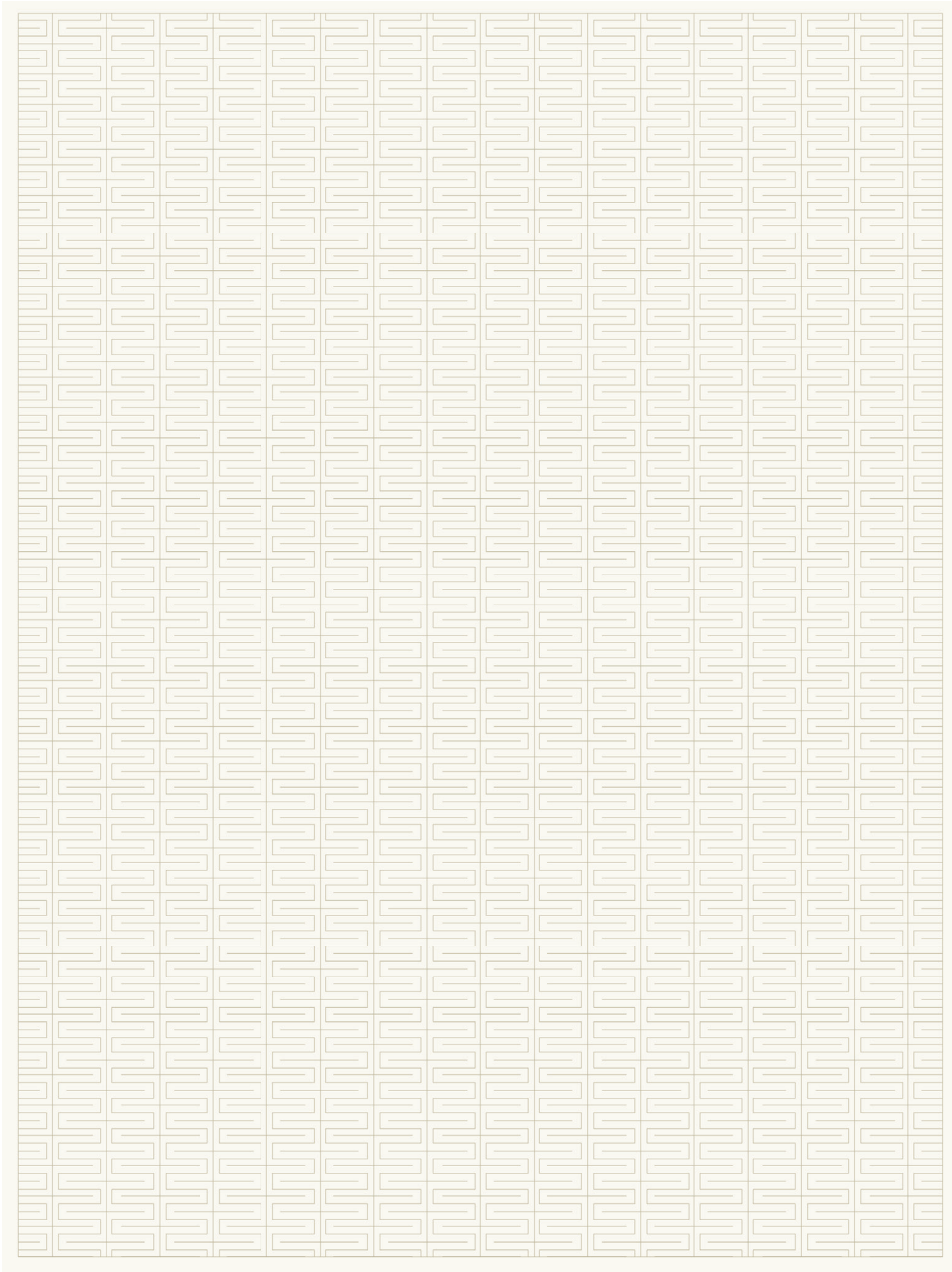


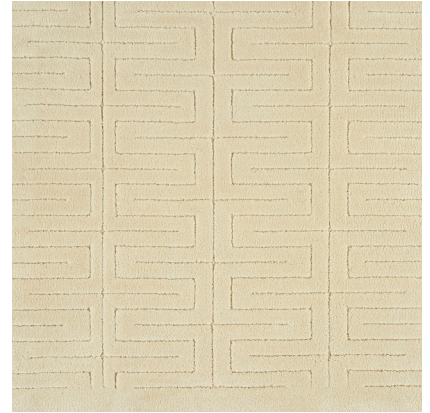
**KOLDING**

075846

**COLOR:** IVORY **FIBER:** SILK & WOOL **GROUP#** 517



ARTWORK FOR 9' X 12' RUG SHOWN



2' X 2' SAMPLE SHOWN



DETAIL SHOWN



DETAIL SHOWN

**ABOUT KOLDING:**

INTERLOCKING AND TOTEM-LIKE, THE GEOMETRIC REPEAT OF KOLDING IS A CLASSIC THAT SHIFTS ELEGANTLY FROM STRIPES TO BARS TO BLOCKS. THE PATTERN IS MADE EVEN RICHER BY THE HAND-CARVED LOOK OF DELICATE LINES FORMED OUT OF HAND-TUFTED SILK WITH A WOOL GROUND.

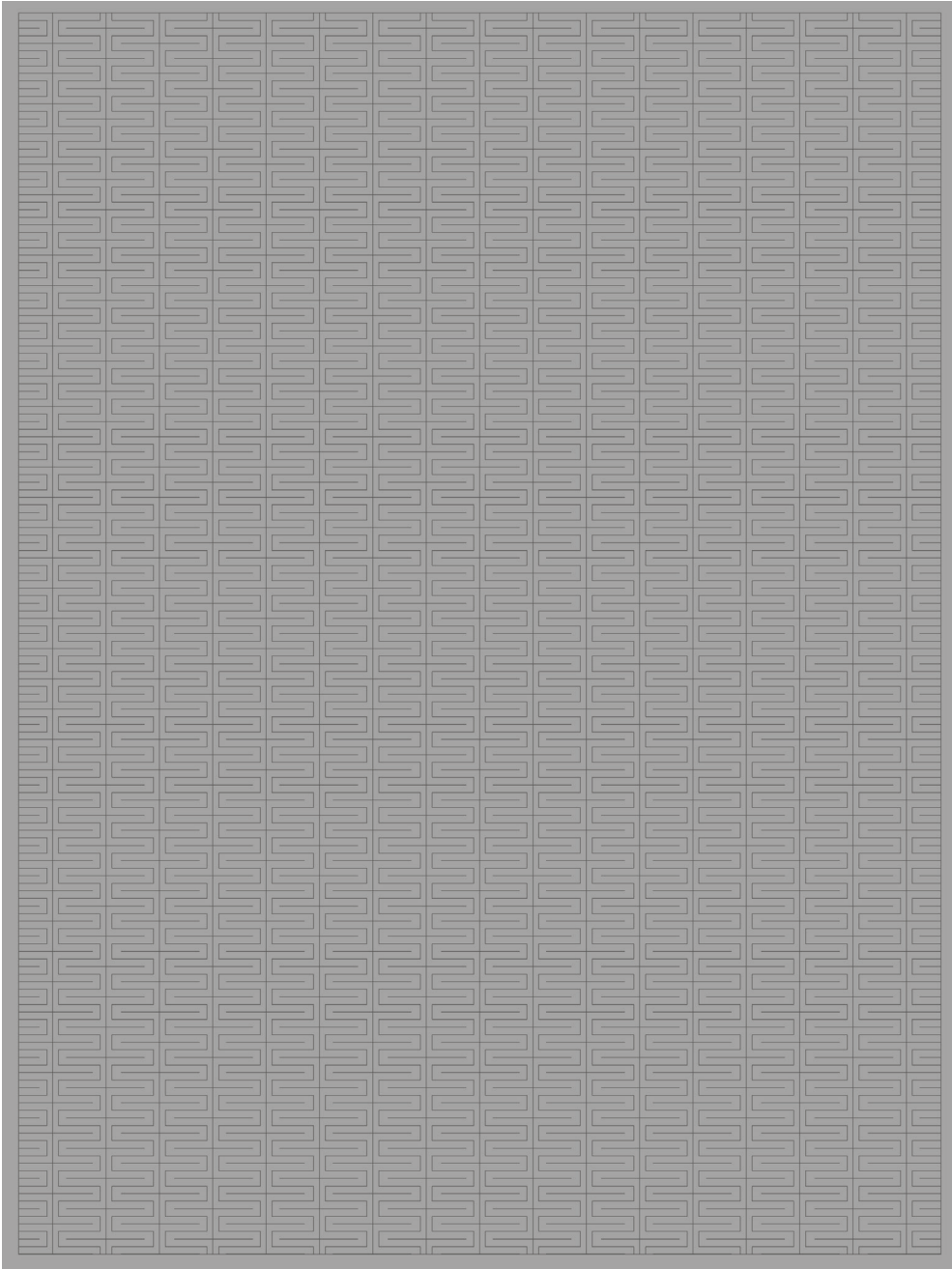
**PATTERSON FLYNN**

©2023 PATTERSON FLYNN. ALL RIGHTS RESERVED.

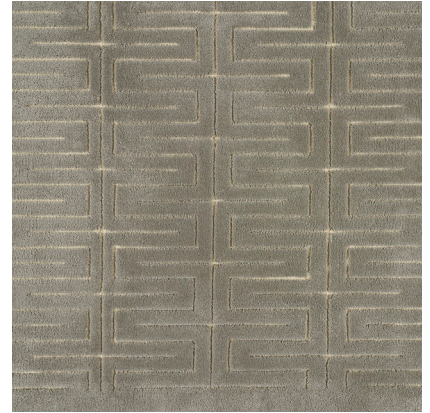
**KOLDING**

075847

**COLOR:** SILVER **FIBER:** SILK & WOOL **GROUP#** 517



ARTWORK FOR 9' X 12' RUG SHOWN



2' X 2' SAMPLE SHOWN



DETAIL SHOWN



DETAIL SHOWN

**ABOUT KOLDING:**

INTERLOCKING AND TOTEM-LIKE, THE GEOMETRIC REPEAT OF KOLDING IS A CLASSIC THAT SHIFTS ELEGANTLY FROM STRIPES TO BARS TO BLOCKS. THE PATTERN IS MADE EVEN RICHER BY THE HAND-CARVED LOOK OF DELICATE LINES FORMED OUT OF HAND-TUFTED SILK WITH A WOOL GROUND.

**PATTERSON FLYNN**

©2023 PATTERSON FLYNN. ALL RIGHTS RESERVED.