

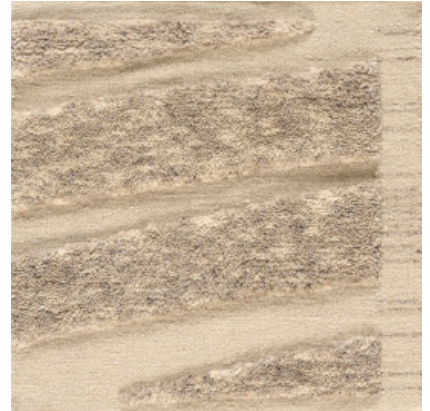
## LA ZEBRA

099153

**COLOR:** NATURAL GREY **FIBER:** UNDYED WOOL **GROUP#** 1188



9' X 12' RUG SHOWN



2' X 2' SAMPLE SHOWN



DETAIL SHOWN



DETAIL SHOWN

### ABOUT LA ZEBRA:

PART OF ALFREDO PAREDES' FIRST COLLECTION FOR PATTERSON FLYNN, LA ZEBRA TAKES THE ANIMAL PRINT IN A MORE ABSTRACT DIRECTION. THE SUPER ENLARGED PATTERN IS TIMELESS AND ELEVATED, AND THE MIXED WEAVE CONSTRUCTION HEIGHTENS THE VISUAL INTEREST WITH A WOOL FLATWEAVE GROUND AGAINST CHUNKY CUT PILE STRIPES DONE IN UNDYED WOOL.

# PATTERSON FLYNN

©2025 PATTERSON FLYNN. ALL RIGHTS RESERVED.



## LA ZEBRA

099151

COLOR: NAVY FIBER: WOOL GROUP# 1188



9' X 12' ARTWORK SHOWN



2' X 2' SAMPLE SHOWN



DETAIL SHOWN



DETAIL SHOWN

### ABOUT LA ZEBRA:

PART OF ALFREDO PAREDES' FIRST COLLECTION FOR PATTERSON FLYNN, LA ZEBRA TAKES THE ANIMAL PRINT IN A MORE ABSTRACT DIRECTION. THE SUPER ENLARGED PATTERN IS TIMELESS AND ELEVATED, AND THE WOOL FLATWEAVE HAS A MODERN, CLEAN FEEL. AN ABRASH DYING TECHNIQUE IMPARTS THE GROUND WITH SUBTLE COLOR VARIATIONS, AND THE BORDER IS FINISHED WITH CONTRASTING SMALL-SCALE STRIPES.

# PATTERSON FLYNN

©2025 PATTERSON FLYNN. ALL RIGHTS RESERVED.

## LA ZEBRA

099181

**COLOR:** BLACK & WHITE **FIBER:** WOOL & GOAT HAIR **GROUP#** 1195



9' X 12' ARTWORK SHOWN



2' X 2' SAMPLE SHOWN



DETAIL SHOWN



DETAIL SHOWN

### ABOUT LA ZEBRA:

PART OF ALFREDO PAREDES' FIRST COLLECTION FOR PATTERSON FLYNN, LA ZEBRA TAKES THE ANIMAL PRINT IN A MORE ABSTRACT DIRECTION. THE SUPER ENLARGED PATTERN IS TIMELESS AND ELEVATED, AND THE GOAT HAIR AND UNDYED WOOL GIVE THE HAND-KNOTTED CONSTRUCTION EXTRA TEXTURE AND DEPTH. IT'S FINISHED WITH A FLATWEAVE BORDER WITH CONTRASTING SMALL-SCALE STRIPES.

# PATTERSON FLYNN

©2025 PATTERSON FLYNN. ALL RIGHTS RESERVED.