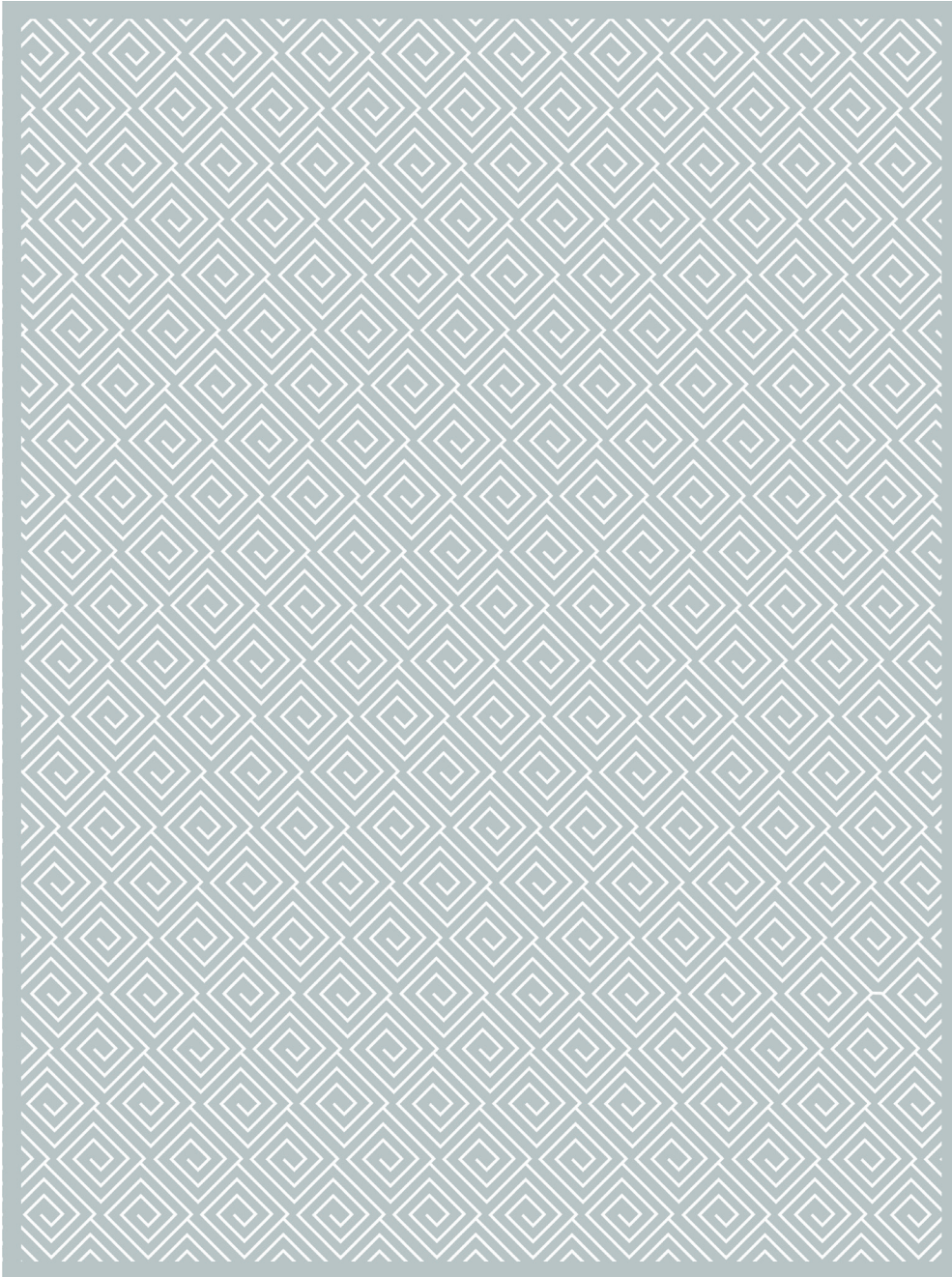


## MEANDER

075793

**COLOR:** COOL GREY **FIBER:** WOOL **GROUP#** 517



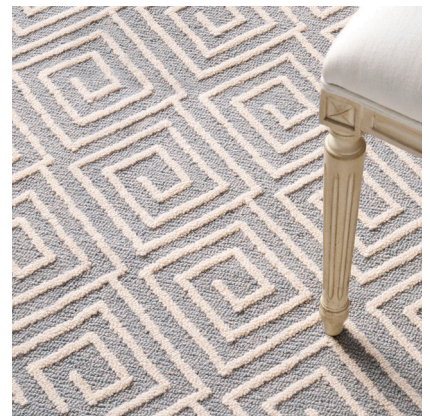
ARTWORK FOR 9' X 12' RUG SHOWN



2' X 2' SAMPLE SHOWN



DETAIL SHOWN



DETAIL SHOWN

### ABOUT MEANDER:

SLIGHTLY IRREGULAR LINES, SUBTLE HIGH-LOW CONTRAST, AND A SOPHISTICATED MIXING OF COLOR IN THE BACKGROUND GIVE OUR MEANDER RUG GREAT DEPTH AND AN ELEGANT HANDMADE APPEAL. THE CLASSIC DIAMOND-SHAPED GREEK KEY IS DONE ON A ROBUST, STATEMENT-MAKING SCALE IN HAND-TUFTED WOOL LOOPS.

# PATTERSON FLYNN

©2023 PATTERSON FLYNN. ALL RIGHTS RESERVED.

## MEANDER

075792

COLOR: IVORY FIBER: WOOL GROUP# 517



ARTWORK FOR 9' X 12' RUG SHOWN



2' X 2' SAMPLE SHOWN



DETAIL SHOWN



DETAIL SHOWN

### ABOUT MEANDER:

SLIGHTLY IRREGULAR LINES, SUBTLE HIGH-LOW CONTRAST, AND A SOPHISTICATED MIXING OF COLOR IN THE BACKGROUND GIVE OUR MEANDER RUG GREAT DEPTH AND AN ELEGANT HANDMADE APPEAL. THE CLASSIC DIAMOND-SHAPED GREEK KEY IS DONE ON A ROBUST, STATEMENT-MAKING SCALE IN HAND-TUFTED WOOL LOOPS.

# PATTERSON FLYNN

©2023 PATTERSON FLYNN. ALL RIGHTS RESERVED.