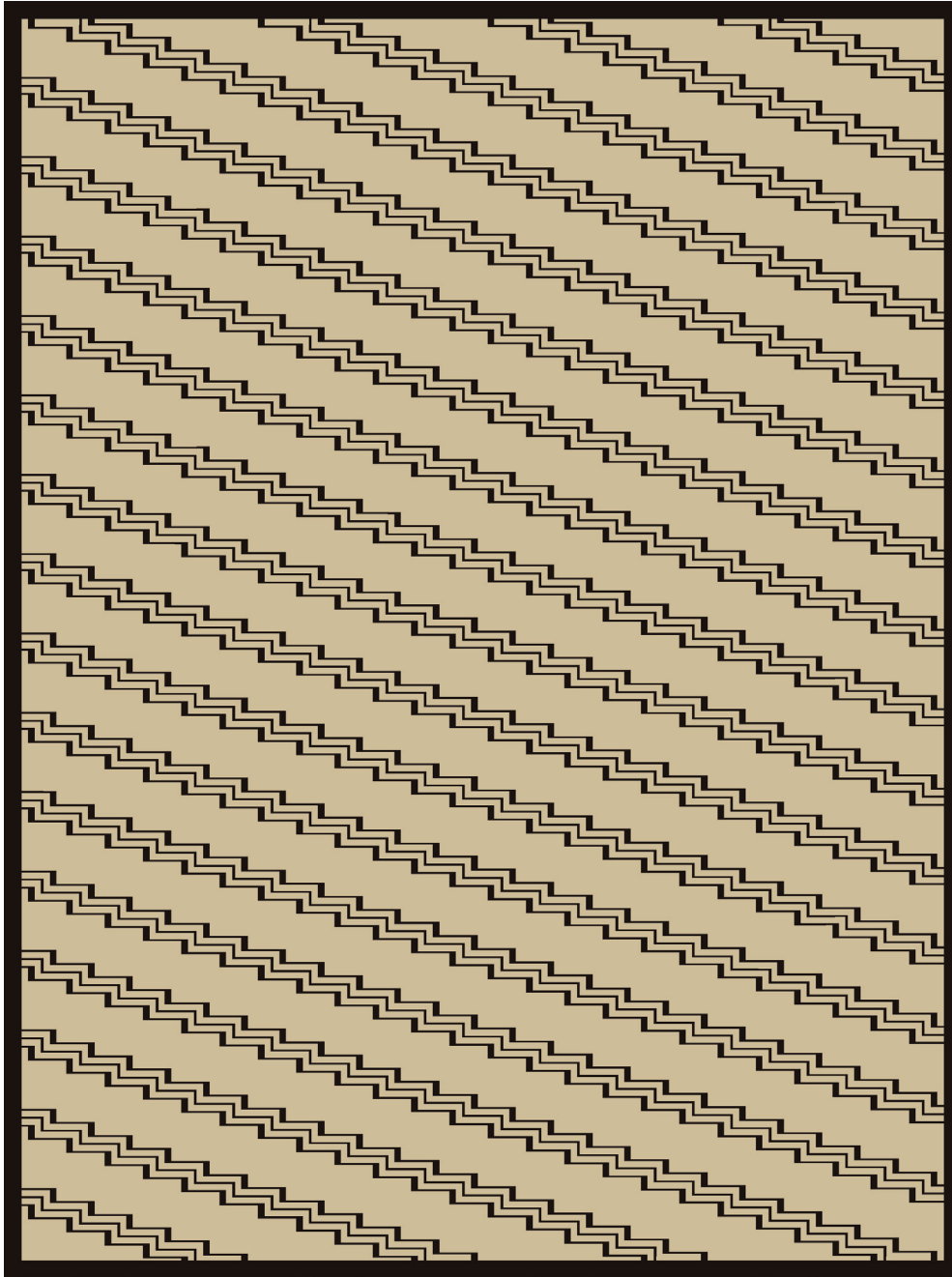


## STEPPE

098663

**COLOR:** BONE/BLACK **FIBER:** WOOL **GROUP#** 1210



9' X 12' ARTWORK SHOWN



2' X 2' SAMPLE SHOWN



DETAIL SHOWN



DETAIL SHOWN

### ABOUT STEPPE:

INSPIRED BY JAPANESE CERAMICS, OUR STEPPE RUG CAPTURES THE SOULFUL IMPERFECTION INHERENT IN HAND-PAINTED GLAZES. THE RUG'S HAND-KNOTTED WOOL LENDS ITS ANGULAR STAIRSTEP PATTERN A CERTAIN SOFTNESS, WHILE AN ABRASH DYING TECHNIQUE ADDS VARIATIONS IN COLOR. THE RESULT IS A PIECE THAT FEELS ALIVE, IMBUED WITH ARTISTRY, WARMTH, AND THE POETRY OF IMPERFECTION.

# PATTERSON FLYNN

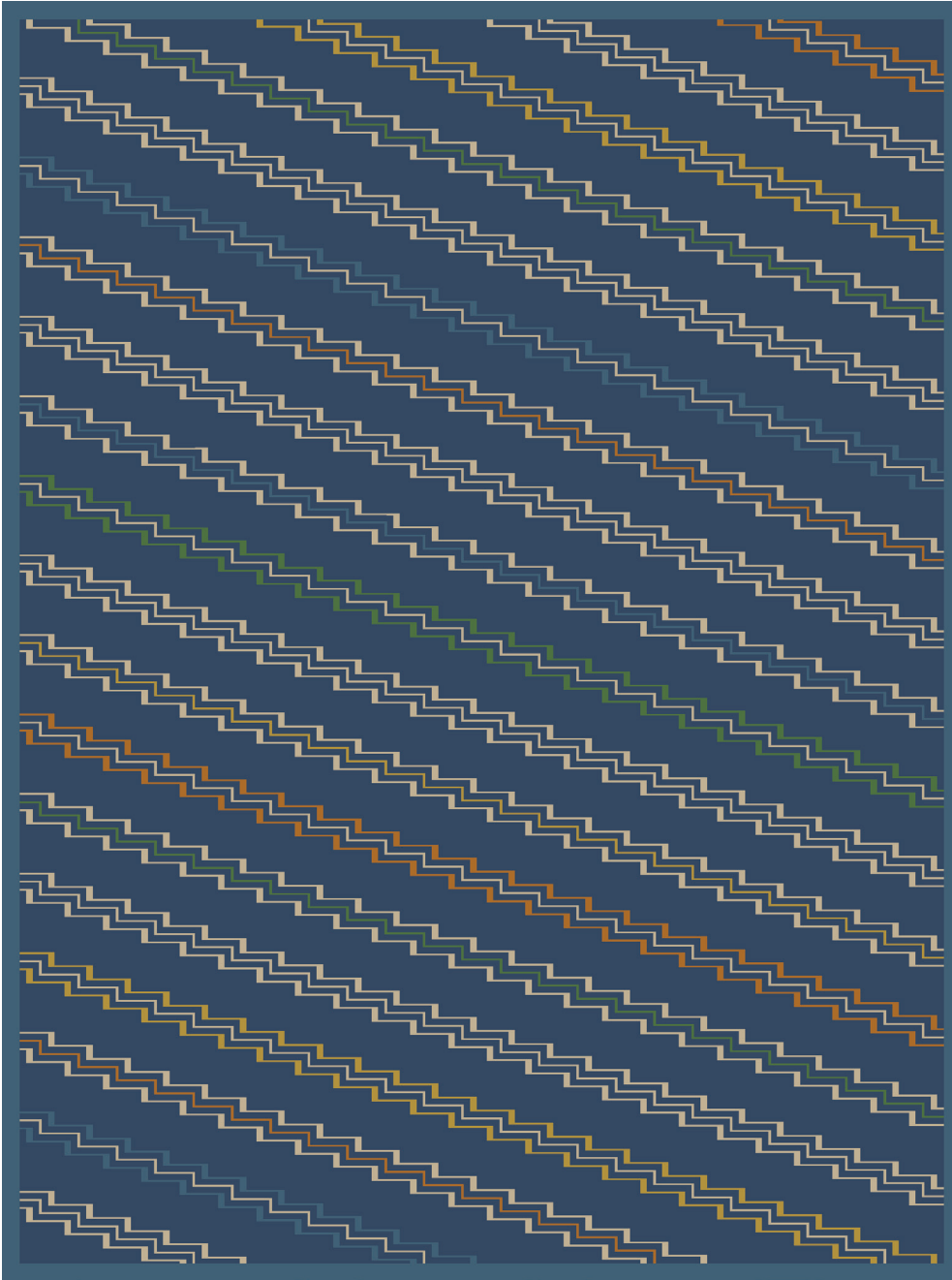
©2025 PATTERSON FLYNN. ALL RIGHTS RESERVED.

## STEPPE

098662

**COLOR:** INDIGO MULTI **FIBER:** WOOL **GROUP#** 1210

---



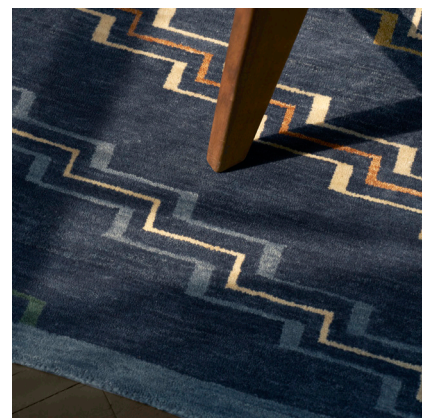
9' X 12' ARTWORK SHOWN



2' X 2' SAMPLE SHOWN



DETAIL SHOWN



DETAIL SHOWN

### ABOUT STEPPE:

INSPIRED BY JAPANESE CERAMICS, OUR STEPPE RUG CAPTURES THE SOULFUL IMPERFECTION INHERENT IN HAND-PAINTED GLAZES. THE RUG'S HAND-KNOTTED WOOL LENDS ITS ANGULAR STAIRSTEP PATTERN A CERTAIN SOFTNESS, WHILE AN ABRASH DYING TECHNIQUE ADDS VARIATIONS IN COLOR. THE RESULT IS A PIECE THAT FEELS ALIVE, IMBUED WITH ARTISTRY, WARMTH, AND THE POETRY OF IMPERFECTION.

# PATTERSON FLYNN

©2025 PATTERSON FLYNN. ALL RIGHTS RESERVED.