

TERRAIN

060270

COLOR: LAPIS **FIBER:** SILK & COTTON **GROUP#** 517



9' X 12' RUG SHOWN



2' X 2' SAMPLE SHOWN



DETAIL SHOWN



DETAIL SHOWN

ABOUT TERRAIN:

DERIVED FROM A VINTAGE FLATWEAVE PATTERN, TERRAIN'S LARGE-SCALE GEOMETRICS NOD TO A SOUTHWESTERN STYLE THAT'S BEEN REINTERPRETED WITH A MODERN SPIN. A SOFT STONE-WASHED FINISH GIVES THIS LUXE TUMBLED SILK AND COTTON DESIGN AN ELEGANTLY WORN PATINA, AND A COTTON FRINGE GIVES THE RUG A LAID-BACK SENSIBILITY.

PATTERSON FLYNN

©2023 PATTERSON FLYNN. ALL RIGHTS RESERVED.

TERRAIN

060269

COLOR: UMBER **FIBER:** SILK & COTTON **GROUP#** 517



ARTWORK FOR 9' X 12' RUG SHOWN



2' X 2' SAMPLE SHOWN



DETAIL SHOWN



DETAIL SHOWN

ABOUT TERRAIN:

DERIVED FROM A VINTAGE FLATWEAVE PATTERN, TERRAIN'S LARGE-SCALE GEOMETRICS NOD TO A SOUTHWESTERN STYLE THAT'S BEEN REINTERPRETED WITH A MODERN SPIN. A SOFT STONE-WASHED FINISH GIVES THIS LUXE TUMBLED SILK AND COTTON DESIGN AN ELEGANTLY WORN PATINA, AND A COTTON FRINGE GIVES THE RUG A LAID-BACK SENSIBILITY.

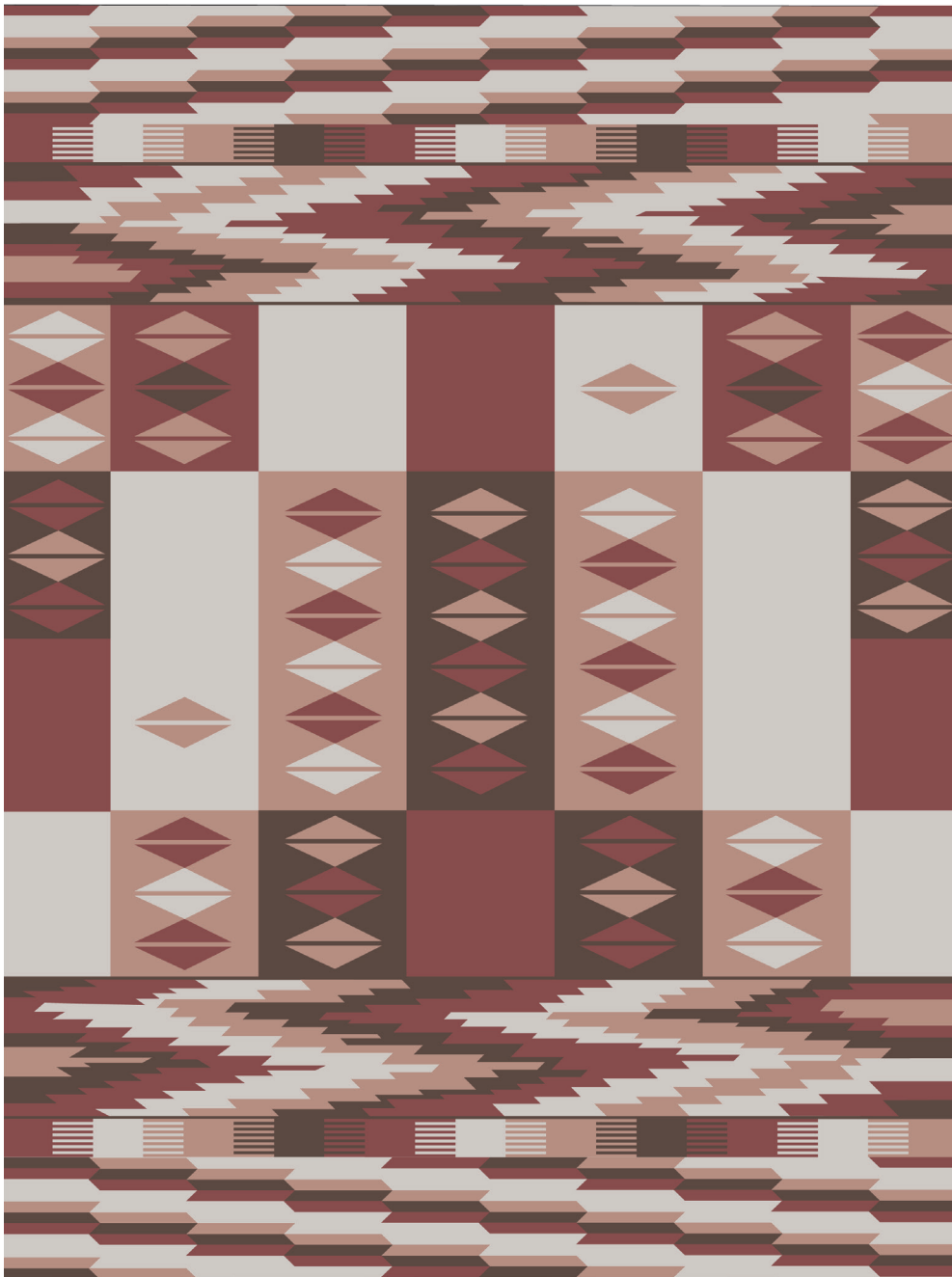
PATTERSON FLYNN

©2023 PATTERSON FLYNN. ALL RIGHTS RESERVED.

TERRAIN

060268

COLOR: TERRACOTTA **FIBER:** SILK & COTTON **GROUP#** 517



ARTWORK FOR 9' X 12' RUG SHOWN



2' X 2' SAMPLE SHOWN



DETAIL SHOWN



DETAIL SHOWN

ABOUT TERRAIN:

DERIVED FROM A VINTAGE FLATWEAVE PATTERN, TERRAIN'S LARGE-SCALE GEOMETRICS NOD TO A SOUTHWESTERN STYLE THAT'S BEEN REINTERPRETED WITH A MODERN SPIN. A SOFT STONE-WASHED FINISH GIVES THIS LUXE TUMBLED SILK AND COTTON DESIGN AN ELEGANTLY WORN PATINA, AND A COTTON FRINGE GIVES THE RUG A LAID-BACK SENSIBILITY.

PATTERSON FLYNN

©2023 PATTERSON FLYNN. ALL RIGHTS RESERVED.