

## TESSERA

094178

**COLOR:** SAND **FIBER:** LINEN & NETTLE **GROUP#** 1188



9' X 12' ARTWORK SHOWN



2' X 2' SAMPLE SHOWN



DETAIL SHOWN



DETAIL SHOWN

### ABOUT TESSERA:

TESSERA'S GEOMETRIC DESIGN NODS TO BOTH HANDWOVEN JAPANESE BASKETS AND TRADITIONAL SACHIKO EMBROIDERY. FEATURING BANDS OF PATTERN OFFSET BY SMALL CHECKERBOARD BORDERS, THE SIMPLE SHAPES ARE MADE MORE COMPLEX WITH INTERNAL PATTERNS CREATED WITH DELICATE STITCH-LIKE TEXTURES. MADE OF UNDYED NETTLE AND BLEACHED LINEN, THE COLOR PALETTE IS INFORMED BY JAPANESE TATAMI MATS.

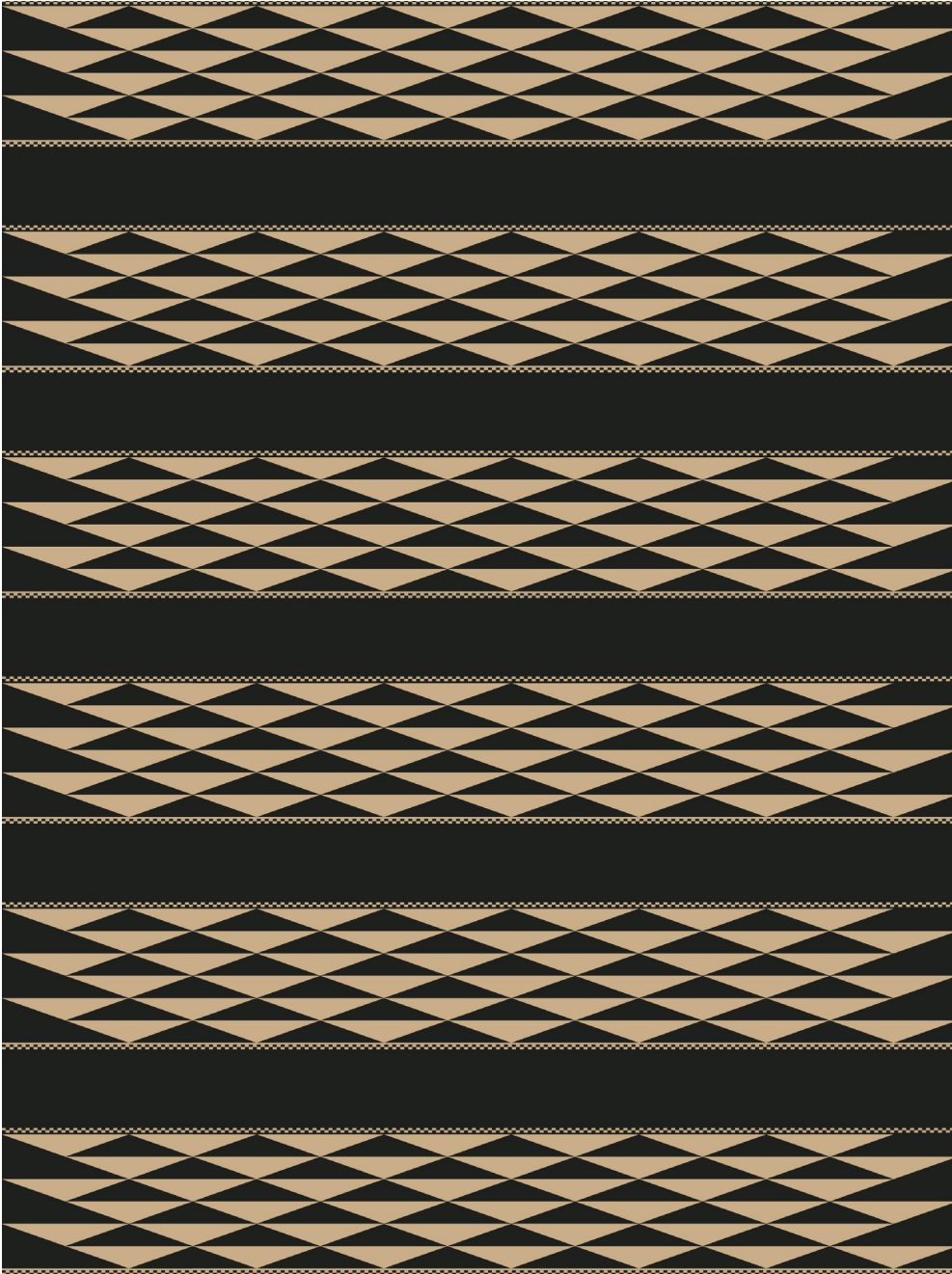
# PATTERSON FLYNN

©2025 PATTERSON FLYNN. ALL RIGHTS RESERVED.

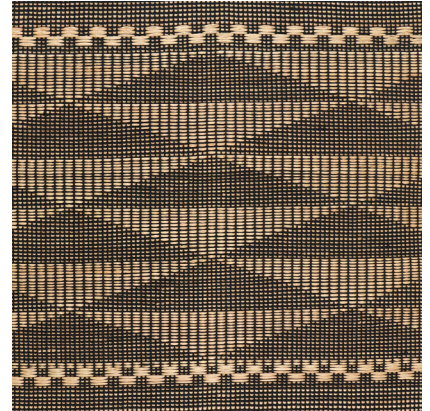
## TESSERA

094180

**COLOR:** BLACK **FIBER:** COTTON & RAFFIA **GROUP#** 1188



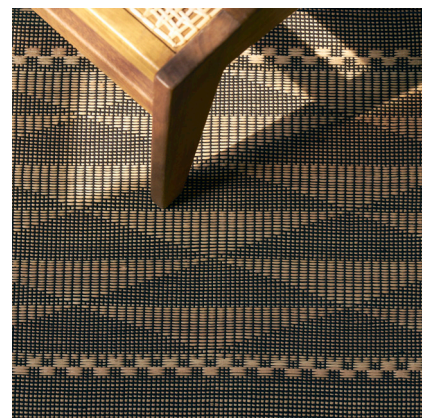
9' X 12' ARTWORK SHOWN



2' X 2' SAMPLE SHOWN



DETAIL SHOWN



DETAIL SHOWN

### ABOUT TESSERA:

TESSERA'S GEOMETRIC DESIGN NODS TO BOTH HANDWOVEN JAPANESE BASKETS AND TRADITIONAL SACHIKO EMBROIDERY. FEATURING BANDS OF PATTERN OFFSET BY SMALL CHECKERBOARD BORDERS, THE SIMPLE SHAPES ARE MADE MORE COMPLEX WITH INTERNAL PATTERNS CREATED WITH DELICATE STITCH-LIKE TEXTURES. MADE OF UNDYED RAFFIA AND COTTON, THE COLOR PALETTE IS INFORMED BY JAPANESE TATAMI MATS.

# PATTERSON FLYNN

©2025 PATTERSON FLYNN. ALL RIGHTS RESERVED.