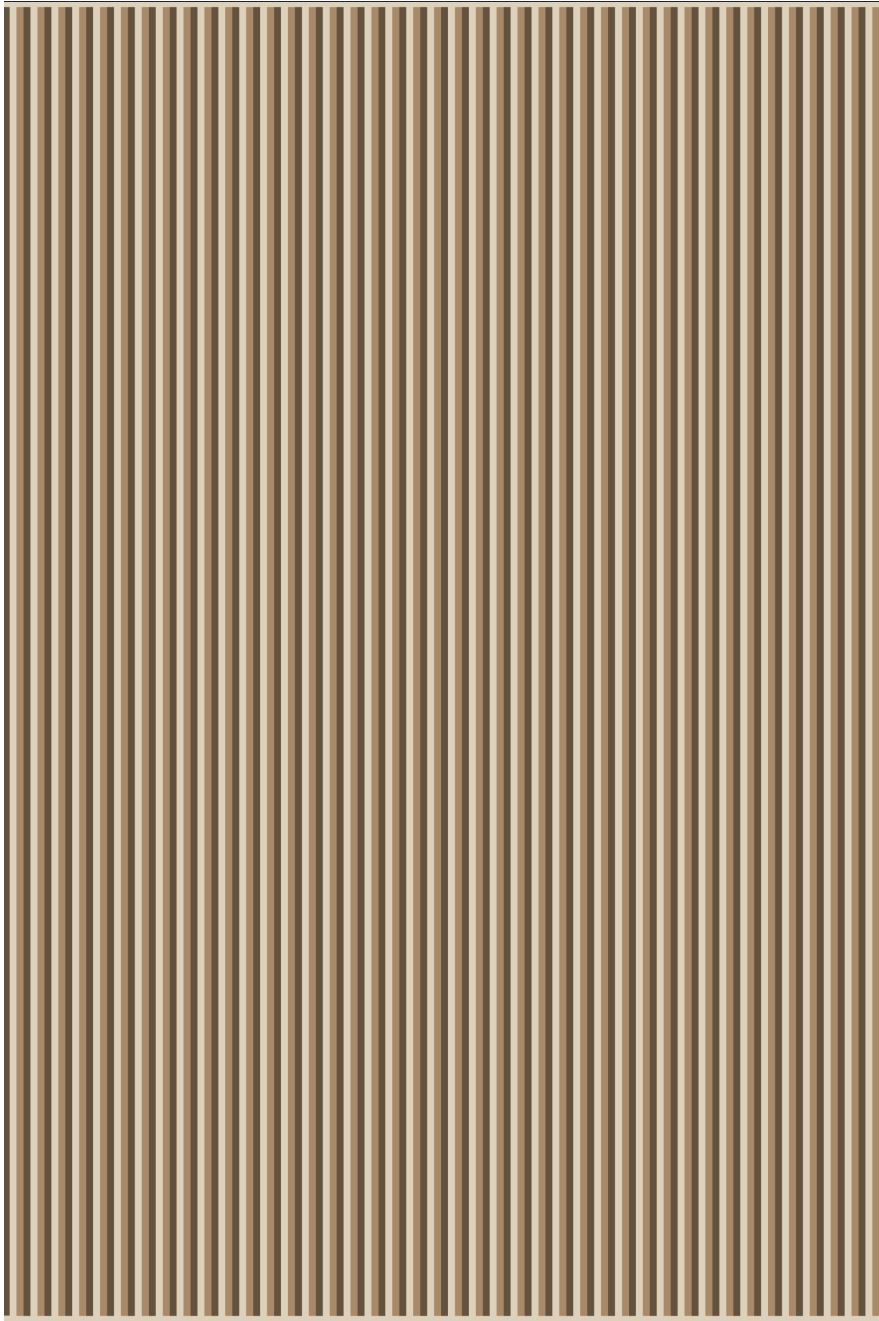


**VALENTINO**

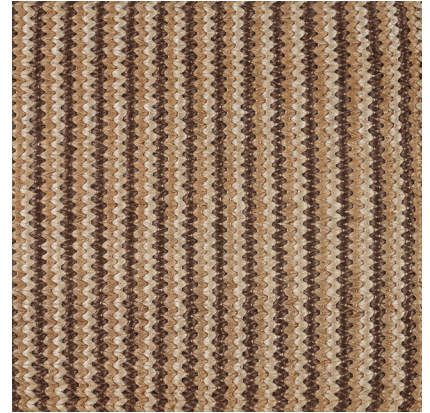
059558

**COLOR:** DOLCE **FIBER:** ABACA **GROUP#** 900

---



ARTWORK FOR 6' X 9' RUG SHOWN



2' X 2' SAMPLE SHOWN



DETAIL SHOWN

**ABOUT VALENTINO:**

VALENTINO TURNS A SIMPLE PATTERN INTO A STANDOUT WITH THIN STRIPES THAT VERGE INTO CHEVRON TERRITORY. THE HAND-WOVEN TEXTURE KEEPS THINGS INTERESTING AND A LITTLE IRREGULAR.

**PATTERSON FLYNN**

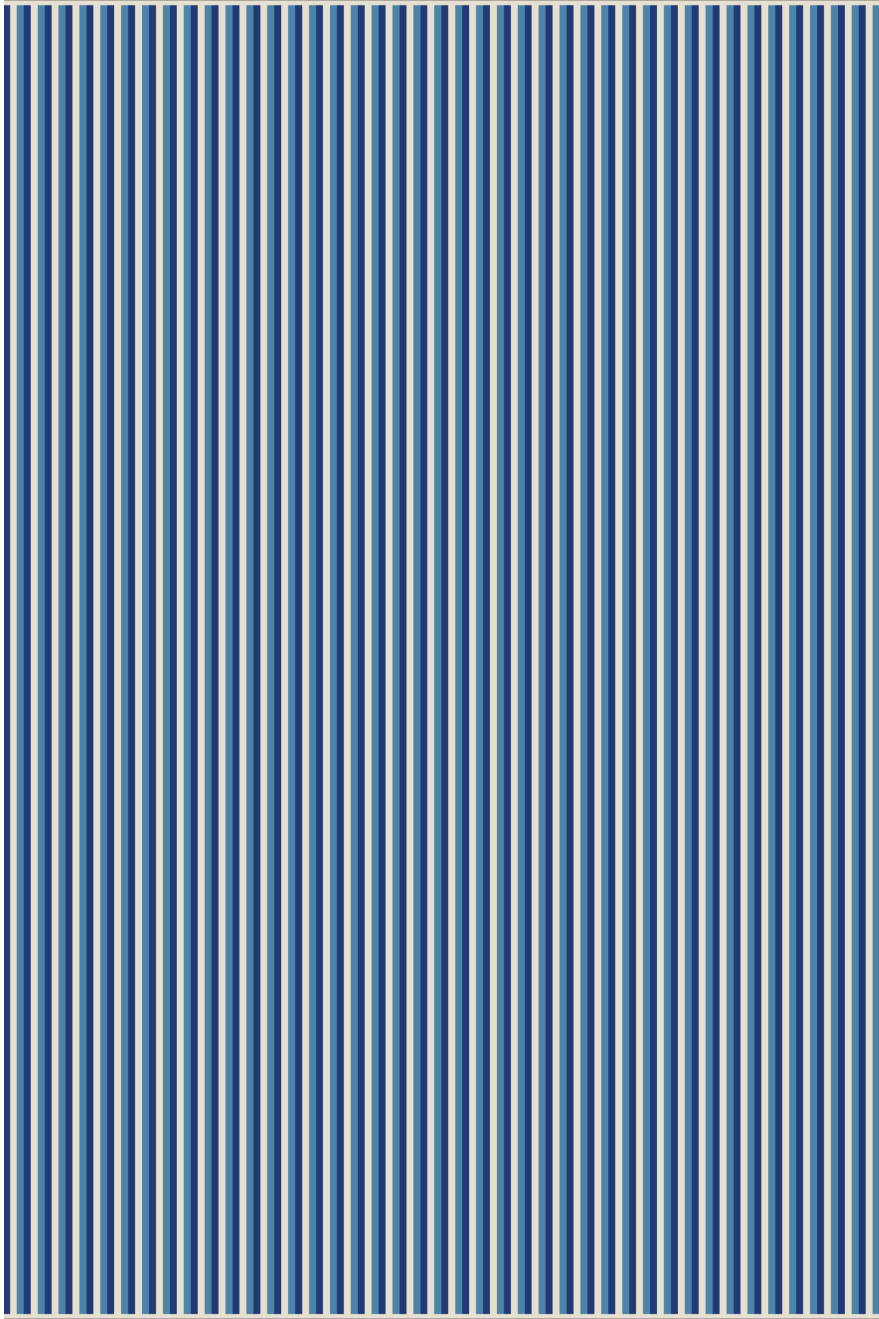
©2023 PATTERSON FLYNN. ALL RIGHTS RESERVED.

**VALENTINO**

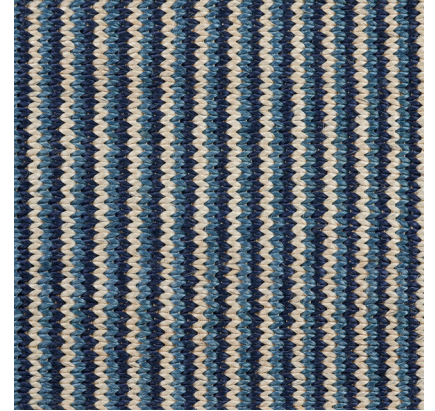
059559

**COLOR:** NAVY **FIBER:** ABACA **GROUP#** 900

---



ARTWORK FOR 6' X 9' RUG SHOWN



2' X 2' SAMPLE SHOWN



DETAIL SHOWN

**ABOUT VALENTINO:**

VALENTINO TURNS A SIMPLE PATTERN INTO A STANDOUT WITH THIN STRIPES THAT VERGE INTO CHEVRON TERRITORY. THE HAND-WOVEN TEXTURE KEEPS THINGS INTERESTING AND A LITTLE IRREGULAR.

**PATTERSON FLYNN**

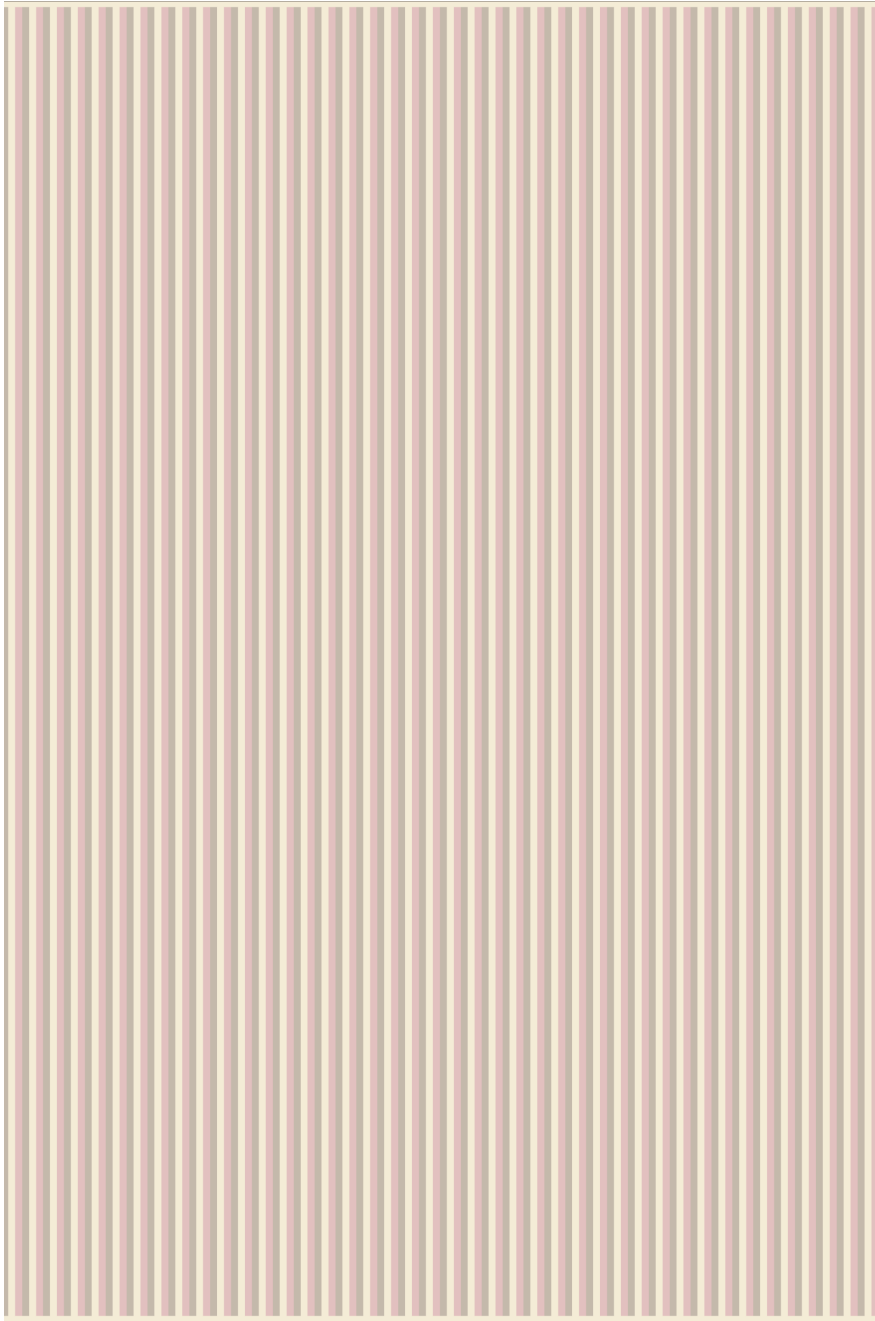
©2023 PATTERSON FLYNN. ALL RIGHTS RESERVED.

**VALENTINO**

059557

**COLOR:** ROSE TEA **FIBER:** ABACA **GROUP#** 900

---



ARTWORK FOR 6' X 9' RUG SHOWN



2' X 2' SAMPLE SHOWN



DETAIL SHOWN

**ABOUT VALENTINO:**

VALENTINO TURNS A SIMPLE PATTERN INTO A STANDOUT WITH THIN STRIPES THAT VERGE INTO CHEVRON TERRITORY. THE HAND-WOVEN TEXTURE KEEPS THINGS INTERESTING AND A LITTLE IRREGULAR.

**PATTERSON FLYNN**

©2023 PATTERSON FLYNN. ALL RIGHTS RESERVED.