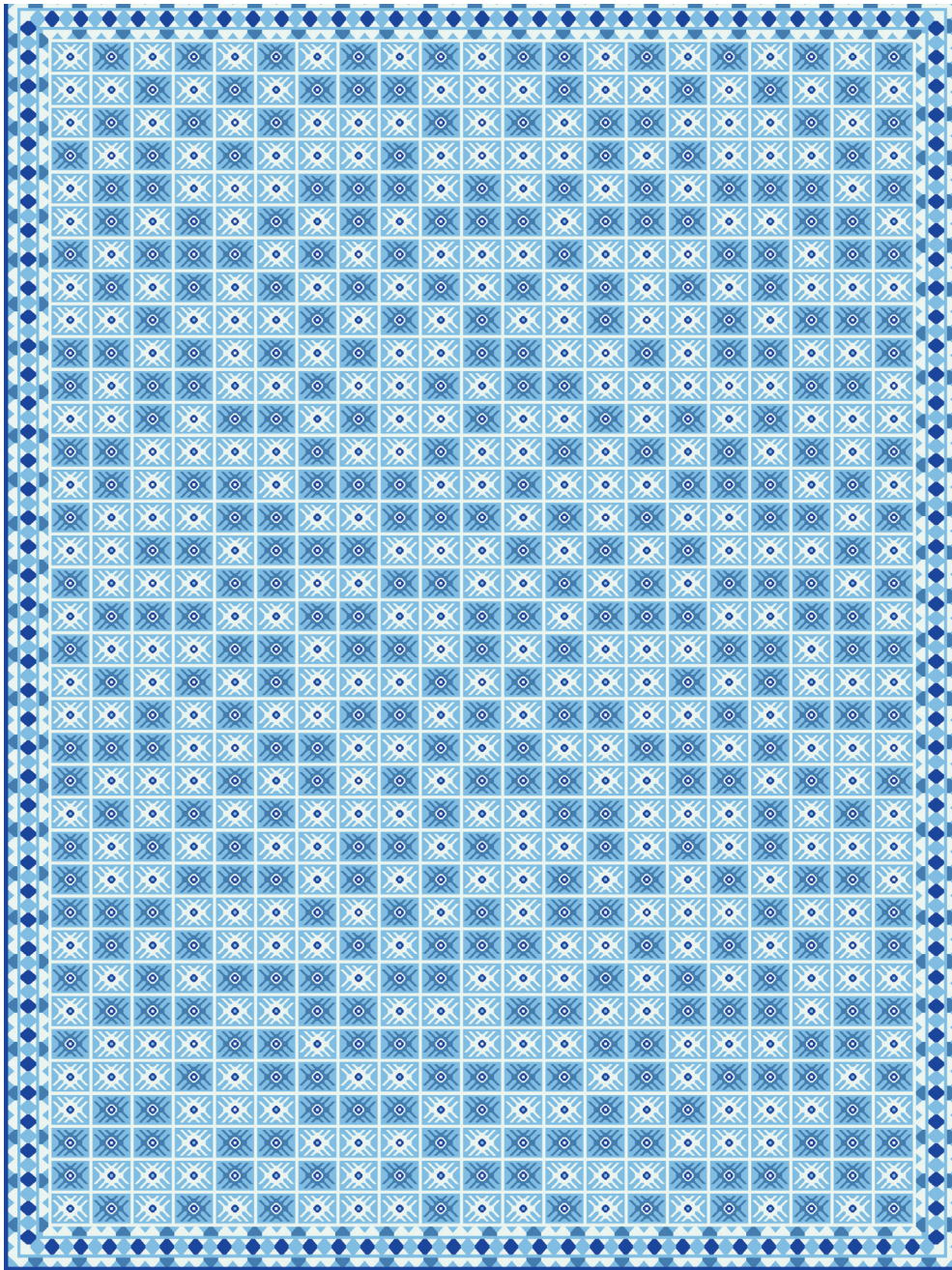


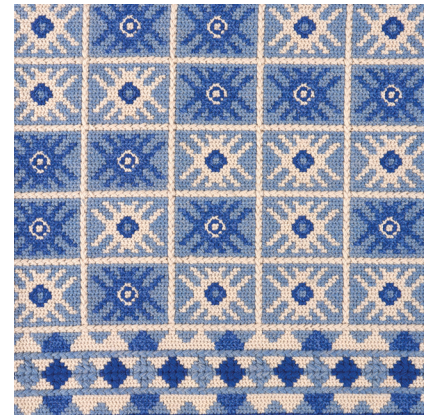
## SKADI

090278

**COLOR:** CERULEAN **FIBER:** WOOL **GROUP#** 1074



ARTWORK FOR 9' X 12' RUG SHOWN



2' X 2' SAMPLE SHOWN



DETAIL SHOWN



DETAIL SHOWN

### ABOUT SKADI:

DONE IN CONTEMPORARY COLORS WITH A NEEDLEPOINT CONSTRUCTION THAT MIXES SMALL AND LARGE STITCHES, SKADI HAS THE LOOK OF A MODERN HANDCRAFT. LAID OUT IN A GRID INSPIRED BY STITCHING CHARTS AND EXECUTED WITH TWISTED YARNS THAT IMPART A MÉLANGE EFFECT, THE RUG FEELS AT ONCE GEOMETRIC AND ORGANIC.

# PATTERSON FLYNN

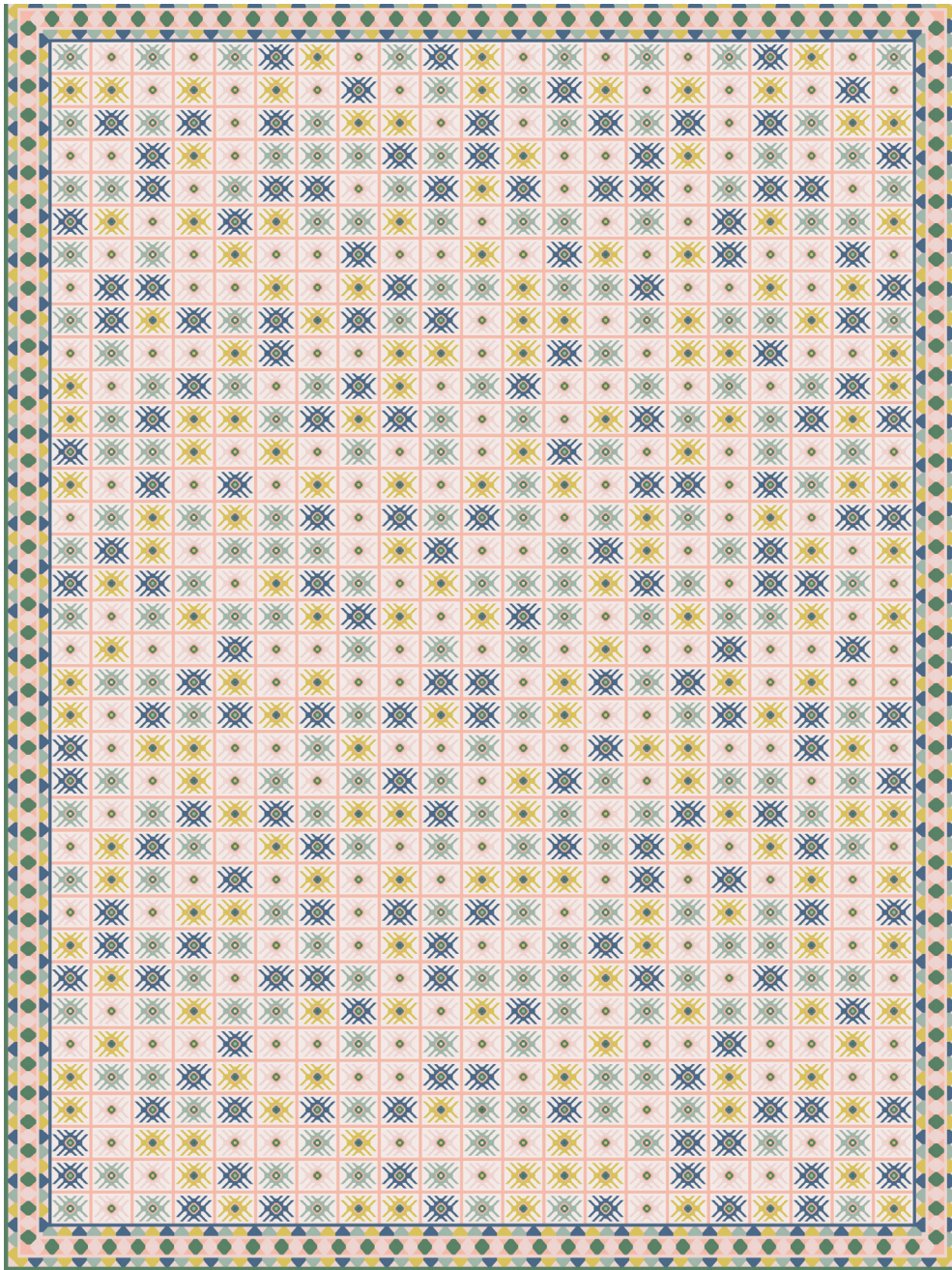
©2024 PATTERSON FLYNN. ALL RIGHTS RESERVED.



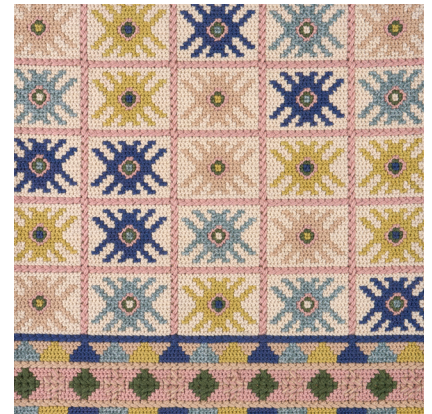
## SKADI

090279

COLOR: MULTI FIBER: WOOL GROUP# 1074



ARTWORK FOR 9' X 12' RUG SHOWN



2' X 2' SAMPLE SHOWN



DETAIL SHOWN



DETAIL SHOWN

### ABOUT SKADI:

DONE IN CONTEMPORARY COLORS WITH A NEEDLEPOINT CONSTRUCTION THAT MIXES SMALL AND LARGE STITCHES, SKADI HAS THE LOOK OF A MODERN HANDCRAFT. LAID OUT IN A GRID INSPIRED BY STITCHING CHARTS AND EXECUTED WITH TWISTED YARNS THAT IMPART A MÉLANGE EFFECT, THE RUG FEELS AT ONCE GEOMETRIC AND ORGANIC.

# PATTERSON FLYNN

©2024 PATTERSON FLYNN. ALL RIGHTS RESERVED.